

Support the Arts

Mount Notre Dame has begun construction of the new Performing Arts Center! Many MND students participate in MND's theatre program throughout their high school career, and it is a great opportunity for them to **Learn, Live, Lead & Serve**. Your investment in the public phase of our capital campaign can help us purchase the items needed below. Each investment will include recognition of the generous benefactor(s). Please complete the enclosed response card to let us know how you plan to get involved.



A Capital Campaign for Mount Notre Dame



STAGE LIGHTING

Stage Lighting Control Console (1) - \$8,500

House Lighting Control Device (2) - \$1,500 Each

LED Stage Lighting Spotlight (20) - \$1,500 Each

LED Stage Lighting PAR Lights (20) - \$1,000 Each

LED Color Changing Cyc Lights (5) - \$3,000 Each

Theatre Followspots (2) - \$10,000 Each

AUDIO-VISUAL

Wireless Microphone System (3) - \$7,500 Each

Monitor Speakers (2) - \$250 Each

Choral Microphones (4) - \$250 Each

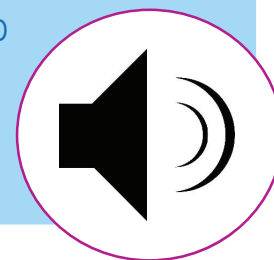
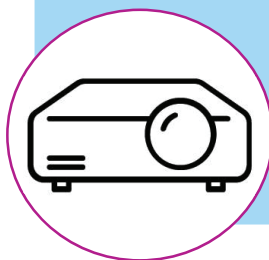
Theater Technical Intercom System (1) - \$10,000

Multimedia Player (2) - \$350 Each

Hard-of-Hearing Assistive Listening System (1) - \$7,500

Video Laser Projector (1) - \$8,500

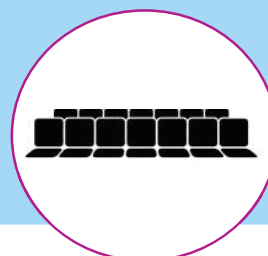
Blue-ray Player (1) - \$450



SPONSOR A SEAT

Sponsor a seat (390) - \$500 Each

A nameplate will be attached to the back of the seat recognizing the sponsorship.



Please complete the enclosed response card and return to MND. Questions may be directed to President Judy Back Gerwe '78 at 513-821-3044 x126 or jgerwe@mndhs.org.