



MOUNT NOTRE DAME

Empowering Young Women



Forward. *Together.*

ANNUAL REPORT | 2020 - 2021



Empowering young women to transform the world.

OUR MISSION

Guided by the Catholic faith and Saint Julie Billiart's belief in the "goodness of God," Mount Notre Dame educates and empowers young women to recognize and develop their unique capabilities to learn, live, lead and serve.

OUR VISION

Mount Notre Dame – an exceptional Catholic, college-preparatory high school – will be recognized for graduating young women who are empowered to transform the world.



Dear Mount Notre Dame Families and Friends:

What a year 2020-21 was! We are grateful to have had the opportunity to celebrate God's goodness every day, even during this year of the pandemic. Our administration had to make quite a few adjustments and we learned a great deal along the way.

One thing we learned is that we have a strong technology base so a transition to remote learning was rather seamless. We discovered what additional tools we needed like classroom speakers, microphones, and monitors; and we provided these so that we could continue doing an amazing job at offering a quality educational program to our students. We also learned that the MND Sisterhood is very strong and found ways to keep the 'MND Experience' alive and well – enjoying many opportunities and successes throughout the year.

Another thing we learned is that our MND Community remained committed to the school as our requests for time, talent and treasure were continuously met with an amazing "yes". We so appreciate your strong support during this past year and thank you for helping us fulfill our mission to educate and empower young women to learn, live, lead and serve.

With the close of 2020-21 school year, we now set our sights on this new year and are so grateful for a strong enrollment of over 730 students. We also know that we can count on the support of so many of you to help us in our journey. If you ever want to discuss ways you might invest in Mount Notre Dame, please reach out to me at 513-821-3044 or at jgerwe@mndhs.org. I would be happy to have a conversation with you – either in person or over the phone.

In Deep Gratitude for your Support,

Judy Back Gerwe '78
MND President

Dear Members of the Mount Notre Dame Community,

As we close the books on 2020-2021, I want to take this opportunity to express my deepest thanks to the Mount Notre Dame administration and faculty and staff for their creativeness, flexibility and untiring commitment to the education of our students during an unprecedented time in our school's history. I also wish to thank my colleagues serving on the Board of Trustees for sharing their talents to help MND thrive through a global pandemic.

To quote Saint Julie Billiart, the foundress of the Sisters of Notre Dame de Namur, "The more difficult the times are, the more we must expect and hope everything from the goodness of the good God."

Reflecting on the past year, I realize more than ever that our community is committed to the MND mission of 'educating and empowering young women to learn, live, lead and serve'. This is evidenced by our healthy enrollment, commitment to sustainability through gifts to the endowment, and the continual focus on providing an exceptional Catholic education to our students.

The future is bright for our school and the students we serve.

Very gratefully yours,

Bob Leshnak
Chair, MND Board of Trustees

2020-2021 BOARD OF TRUSTEES

CHAIR

Bob Leshnak, Chair

Bill Hunt

Mina Jones Jefferson

Tom Joseph

IMMEDIATE PAST CHAIR

David Mattei

Mick Kowitz

Tim Marklay

Kim McBride

MEMBERS AT LARGE

Bill Beckham

Erin Satzger Clemons '04

Bob Crable

Jim Creeden, Jr.

Tom Geier

Bill Goslee

Kathy Kissel McQueen '81

Dr. Jo Ann Recker, '60, SNDdeN

Tony Reed

Lisa Harmon Rousseau '80

Jerry Royce

Cristina Seda-Hoelle '92

Pam Thiemann '82

Gerald J. Ulland



Keeping the MND Experience Alive

By Karen Day, Principal

In my years as an MND faculty member and administrator, I have had the privilege to innovate and collaborate with incredible peers and students. Over time, we have developed an authentic MND experience. One of the challenges that confronted our community last summer was planning to implement a pandemic-friendly authentic MND Experience. The 2020–2021 school year confirmed that MND is filled with empowered women and men educators and tenacious students who heard our plea to 'Keep the MND Experience Alive' – and did so with tremendous success! Take a glimpse into the wonderfully successful world of MND pandemic life!

“Teach them what they need to know for life.” – St. Julie Billiart

In implementing a safe environment for MND students, MND planned a schedule that allowed for space in our week for alternative experiences. Known this past year as Non-Traditional Instruction (NTI) days, these were mostly held on Wednesdays, allowing for deep cleaning of our building and a mid-week change of routine. We often had some grade levels present at MND while the other grade levels were remote for this one day. On other days, all students were present in the building while participating in a variety of activities that helped the MND Experience remain true. And, on some occasions, MND students were all remote yet fully participating in authentic learning experiences.

On eight different days across the year, MND hosted Lifelong Learning Modules (LLMs) that were named in honor of St. Julie’s call to “Teach them what they need to know for life.” These Zoom-style remote sessions involved many guest speakers and relatable learning. (A list of others can be found on the next page.) We learned that LLMs inspired our students to see the future – in career paths, in applied skillsets, in women (mostly) and men who are transforming

our world. We learned that by preserving instructional time on the remaining four days per week, we created space in our academic lives to create authentic instruction from lived experiences. And, in that instruction, we were able to connect the curriculum content to what they need for life!

Competitions, Productions and Dancing, Oh My!

In a school year of social distancing and controlled public environments, there certainly was a challenge to create pathways for students to interact with each other. Even the MND lunchroom was sliced into cubical eating corrals in order to minimize transfer during unmasked eating time. However, we were blessed to have permission from the State of Ohio to continue with sports, theatre and dance team with strict guidelines to follow. And success certainly was found.

- MND’s Dance Team had the longest season of all! With competition changes plaguing the early months of their season, flexibility was key. The team extended their season after a postponement of their national competition in Orlando, Florida - moving it from February to April. In order to make this trip possible, special lodging arrangements were made by our dance families. MND Dance persevered and completed this memorable season earning 6th place in Pom and 13th place in Jazz.
- MND’s athletic teams were ready to take on this pandemic. Our fall sports teams led the way in helping us learn how to best implement sports during this time. Patience by our students, athletic department and fans was key. This led to success in their season as well as in the winter and spring seasons. As I proudly proclaimed in my graduation reflection speech, “The Class of 2021 is the only class in MND history to have three State Championships in one year (volleyball, basketball and diving) while also having the least number of fans in the seats and the greatest number of absences from practice. #QuarantineLife

- MND Theatre faced the double whammy! Not only was the pandemic impacting their ability to operate as usual, the construction of MND's Performing Arts Center had them searching for appropriate rehearsal spaces. MND's hallways, foyer, cafeteria and classrooms became prime rehearsal spaces throughout the year. Two shows (*Into the Woods* and *Joseph and the Technicolor Dreamcoat*) found their center stage in MND's gym where there was plenty of socially distanced seating available. Performers and patrons were masked. In February, MNDT moved into the new Performing Arts Center with two more productions (*The Complete Works of William Shakespeare Abridged* and *Shrek The Musical*). As one MND staff member exclaimed, "while the West End in London, Broadway in NYC and Hollywood were closed down, MNDT was open for business!"

Of course, these major program successes were the compliment to the day-to-day club meetings, service experiences, retreats, outdoor pep rallies and even a spring junior-senior traditional prom. We learned that our students flourish in an MND environment because of the interactions they have with each other – regardless of the need to wear a mask!

Learning and the Sisters of Notre Dame go virtual!

The SNDdeN curriculum is part of our religion content that ties into our school-wide commitments to spiritual development and academic development. These lessons and experiences help our community tap into the rich legacy that is part of our SND heritage. Besides learning the history of St. Julie Billiart and the Sisters of Notre Dame, our students tour the convent and visit the SND archives. They also conduct personal interviews with the sisters and participate in a small group book study and discussion at the convent. Planning for and conducting these learning experiences that deepen the understanding and connection for our students in the pandemic (which closed the convent to any visitors and limited the external contacts for all of the sisters) required some creativity! Thanks to leadership planning and commitment by MND's Campus Ministry and Religious Studies Teams and the willingness of our sisters to go virtual, we were able to continue with this learning.

- A tour of the convent was recorded and narrated so that our Freshman students could see the convent and learn some of the SNDdeN history from the sisters.
- Each year juniors read *A Journey of Courage, The Amazing Story of Sister Dorothy Stand* by Michele Murdock for their book discussion with the sisters. A small group of students participated in a Zoom book discussion with the sisters – some of whom were friends with Sr. Dorothy. The recorded book discussion was shown in class so all juniors could gain this firsthand knowledge.
- Our seniors participated in small group Zoom interview sessions with SNDs from all over the United States during their Catholic Lifestyles course. Being able to include sisters outside of Cincinnati was a happy benefit of this pandemic!

As we teach at MND, those who work and attend our school are heirs and trustees of the SNDdeN legacy. And this year, we were inspired to carry on that legacy virtually, partnership with the them.

It was a year like no other – and that in itself was the inspiration to make it one of the best yet! A faith-filled Christ-centered environment – even with masks, social distancing and extra cleaning protocols – was the foundation that allowed our MND students to have an *authentic* MND Experience where they grew in faith and found success in the classroom and in co-curricular activities. The 2020 – 2021 school year was kept alive, and our students uniquely developed within an *authentic* MND Experience. As St. Julie proclaimed, "How good is the good God!"

Lifelong Learning Modules

Academic Development

- Next Level Study Habits
- Creating a Professional Resume
- MND Women in Business Panel
- Honoring Our Veterans
- The Art of the Interview
- Information Overload: How to Evaluate, Navigate, and Utilize Online Sources
- Women in STEM Panel
- Women in Finance Panel

Spiritual Development

- Elements of Catholic Social Teaching
- Trauma, COVID and Spiritual Perspectives
- The Secret of Living is Giving
- Breaking the Silence: Empowered to Talk About Race
- Gratitude Through Grief: Reviving Faith and Hope
- A Culture of Life
- A Place to Call Home
- Making Brave Choices

Student Development

- Introduction to Mindfulness
- Grit: The Power of Passion and Perseverance
- Presenting Your Best Digital Self
- Up in Smoke – What is the Risk?
- The Life-Changing Power of Gratitude
- Finding Resilience
- Culinary Survival Skills: Tips for Creativity and Safety in the Kitchen
- How to Keep Two "Trusted Friends"
- (Cars and Computers) Dependable for Life

A Step Forward in Our Journey

By Judy Back Gerwe '78, President

In 2017, the Achieve More Strategic Plan was launched after a group of over 100 Mount Notre Dame constituents gathered to talk about the future of the school. A committee was then formed to study the results of the discussion and formulate a plan to move forward. The committee identified five main themes that became the Aspiration Statements of the Strategic Plan:

- To be the exemplar for Catholic girls' education
- To establish ideal learning environments characterized by superior facilities
- To fully engage the Mount Notre Dame community
- To continue to develop strong connections to the Catholic Faith, the Sisters of Notre Dame de Namur and the traditions of St. Julie Billiart
- To be financially positioned to advance the mission of MND

Once the Aspiration Statements were determined, committees were formed around each one to determine what goals and objectives would illustrate the achievement of each statement. We then put together a timeline as to which objectives we would focus on each year over the next five years. We are now in the last year of the plan and I can honestly say that it has truly been a "living" document and we have much to be proud of. We will begin work on our next Five-Year Strategic Plan in the spring of 2022.

MND does seem to be the Catholic girls' school of choice right now and I think that is because we have been working hard to make us "the exemplar". Some major accomplishments from the first aspiration statement include greater participation in local, regional and national programs that recognize academic excellence and the expansion of participation in College Credit Plus courses.

We also want to offer our students "ideal learning environments characterized by superior facilities". Our faculty has been engaged in Professional Learning Communities for several years now and that has resulted in greater student success. We have increased participation in global learning opportunities by including Chile and Japan in our exchange programs. We have also welcomed a Wellness Counselor to our guidance staff who focuses on student mental health. A project that was greatly supported by many MND constituents like yourselves included the creation of a new Performing Arts Center. This new space occupies where the library was housed, so we also designed a new Learning Commons in the main hallway of the Academic wing. Both areas have enhanced the overall facilities.

Engagement with our Mount Notre Dame Community is very important to us and we continue to offer opportunities for our friends and families to be involved. I also share a monthly newsletter to keep everyone up to date on what is going on at our amazing school. Let us know if you are not receiving these via e-mail and we will make sure to add you to the list!

Our Catholic faith, the Sisters of Notre Dame de Namur and the traditions of St. Julie Billiart, the order's foundress, are very important to us. We offer monthly all-school celebrations of the Liturgy and/or Prayer Services, as well as the opportunity to participate in the sacraments and other devotions. We always look for ways to partner with the Sisters as we celebrate our connection with them and we continue to increase exposure to and appreciation of the Hallmarks of a Notre Dame Learning Community which line up well with Gospel values and Catholic Social Teaching.

Finally, we are working hard "to be financially positioned to advance the mission of MND." Most of our income is generated through tuition and benefactor support. Our enrollment is strong at over 700 students and we have an amazing group of benefactors who support the MND mission by investing in our school – in our Annual Fund to help the budget and in endowment dollars to help the school live on in perpetuity. A healthy endowment is key to remain sustainable and we are excited to announce that our endowment is now over ten million dollars. We have a goal to grow the endowment to \$30M over the next ten years. The interest on this money will help families afford a Catholic high school education at Mount Notre Dame as well as fund some of our programs, such as STEM.

We will continue to work at achieving the goals and objectives of the last year of the current Strategic Plan so that all of our Aspiration Statements become reality. And then we will start the process anew, so that MND continues to grow and keep our place as a premiere school for young women in the Cincinnati area.



Vision Becomes Reality

By Jen Thamann, Public Relations Manager

When Mount Notre Dame established its Achieve More Strategic Plan in 2017, a key aspiration was "to establish ideal learning environments characterized by superior facilities". MND has worked continuously to make this vision a reality over the last four years and it culminated with the opening of the Performing Arts Center in March 2021.

MND partnered with MSA Design, HMBA and R.J. Beischel Building Company on this \$2 million renovation to convert the existing auditorium and library spaces (the original gymnasium for those who graduated prior to 2001) into a state-of-the-art Performing Arts Center. The renovation includes upgrades to the HVAC and fire alarm systems, the sound and lighting system with an integrated AV system and control booth, a wrap-around gallery, on-site scene shop and box office.

MND hosted a Grand Opening celebration as well as several special event tours this past spring to showcase the new space to the MND community. The features are, in a word, superb. Some features are front and center while others are more behind the scenes.

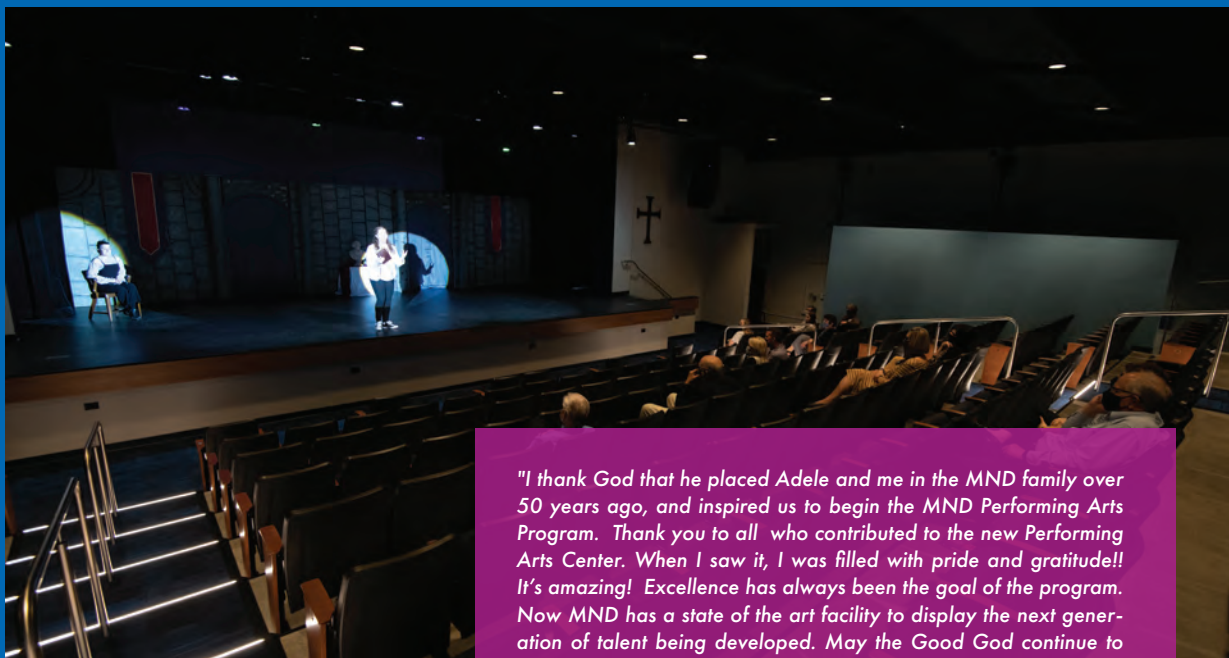
Seating received a significant upgrade in both quantity and comfort. The Performing Arts Center offers permanent, theatre-style seating for 390 guests and includes handicapped accessible seating as well. Individuals have an opportunity to sponsor a seat with their names engraved on the back. "We were honored to support MND's new Performing Arts Center with a donation for seating," expressed John and Marie Carnevale George '74. "It was our way of showing gratitude for our past graduating daughters (Angie George Arengo '94, Anissa George Cundall '97, Amy George Langford '00) and supporting the future of our granddaughters (Classes of '24, '26, '28, '30, '31). This is truly about MND offering the best in class for academics, athletics and now the arts."

The Performing Arts Center boasts a state-of-the-art control booth featuring the latest in lighting and sound technology. New features include LED lighting instruments that can be controlled with precision and offer an array of colors. Incredible new speakers compliment the space no matter where you are sitting. These features help MND Theatre enhance the quality for all productions in the new space and provides an unparalleled learning experience for our students.

The addition of an on-site scene shop located directly behind the stage has truly been a convenient upgrade for MND Theatre. This allows students to design, build and store scenes and other prop materials in the building. Prior to the completion of the Performing Arts Center, MND utilized an off-site location for the construction and storage of materials, which led to the burden of transferring these items to and from MND.

The reality of the Performing Arts Center is due to the generosity of many benefactors. As such, the entrance features a gratitude wall to acknowledge their investment in the MND community. The wall leads into a wrap-around gallery which offers the perfect space to showcase student artwork and other educational work throughout the school year. According to MND President Judy Back Gerwe '78 "The gallery is probably my favorite part of the Performing Arts Center. I envision multiple uses for this space."

We encourage you to check out the Performing Arts Center on your next visit. MND Theatre has a dynamic program lined up for the 2021-2022 school year, including Young Frankenstein (Nov. 2021), The Diary of Anne Frank (Feb. 2022) and Big Fish (April/May 2022). Your seat awaits!



"I thank God that he placed Adele and me in the MND family over 50 years ago, and inspired us to begin the MND Performing Arts Program. Thank you to all who contributed to the new Performing Arts Center. When I saw it, I was filled with pride and gratitude!! It's amazing! Excellence has always been the goal of the program. Now MND has a state of the art facility to display the next generation of talent being developed. May the Good God continue to guide and inspire future generations! "

Tom Salerno

Our Foundation for the Future

MND's Plan for Sustainability

By Rose A. Eckhoff, Director of Leadership Giving

It should be no surprise to anyone that affordability of Catholic Schools is a huge concern these days. At MND, we recognize the sacrifices that families are making and are working very hard to develop affordability initiatives to keep tuition costs at the lowest level possible, without sacrificing any portion of 'the MND Experience'. This includes academic excellence and rigor, outstanding extracurricular opportunities, and a solid faith-based curriculum. A very important component of the initiatives is MND's commitment to increase the school's endowment to 30 million dollars within the next ten years.

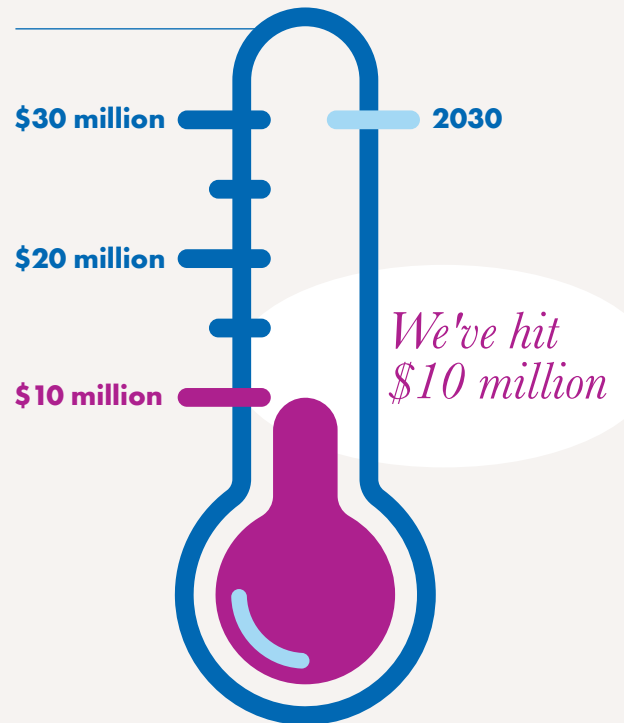
According to Development Committee Chair Bill Beckham "An endowment fund of 30 million dollars will provide the basis for MND's sustainability. We want to be not only surviving in ten years, but also thriving and confident that MND will be here for our next generation and beyond."

Why is endowment so important? Because over 40% of MND's student body currently requires financial assistance and we see this number growing. An endowment of this size would ensure that ample need-based scholarships are available for any student desiring an MND education, no matter their economic situation, and would also keep tuition increases to a minimum.

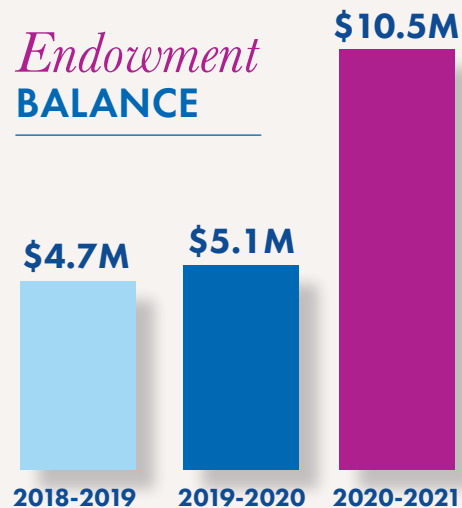
President Judy Back Gerwe '78 explains, "An endowment fund is like a saving account for MND, where the principle is never touched, and only the interest earned on the account is used to build the fund as well as support the ever growing need for financial assistance. Each year a rolling average of 4% of investments earned on the pooled endowment fund is distributed to support need-based scholarships, ultimately eliminating the need to use any other revenue."

Building an endowment takes commitment, discipline and a three-pronged approach that includes: effective investing; philanthropic giving; and a pipeline of school support. MND Board of Trustees President Bob Leshnak notes, "To date our endowment has grown to over \$10M thanks to the generosity of so many who have established a named endowed scholarship or remembered MND in their estate plan. We look forward to engaging more and more families in these wonderful investment opportunities which will help to secure our future."

Endowment UPDATE



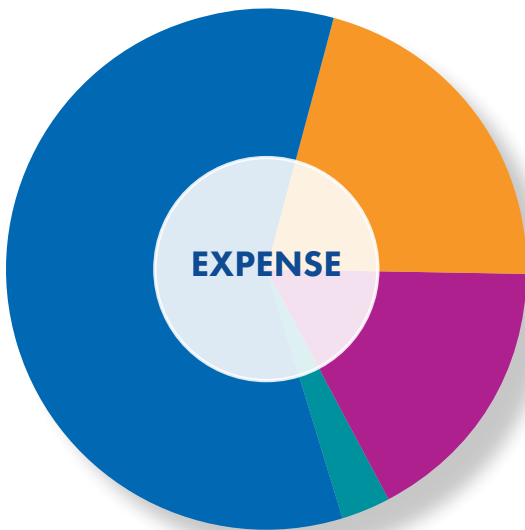
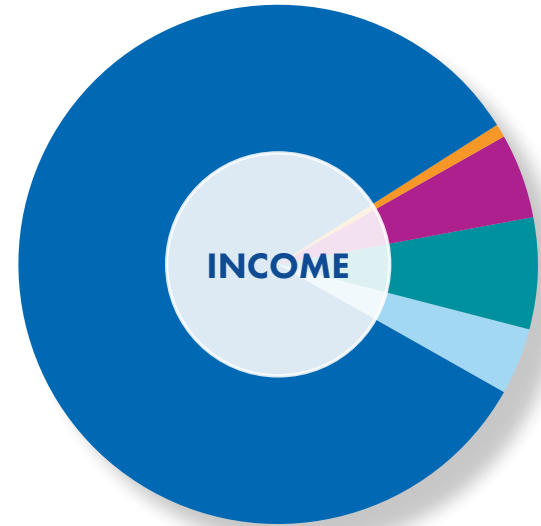
Endowment BALANCE



Our Numbers 2021-2021

Income

Tuition and Fees	\$10,712,000	82%
Endowment Earnings Contribution	141,200	1%
Unrestricted Giving	717,000	5%
State Funds	961,500	7%
Student Activities	551,500	4%
Total	\$13,083,200	100%

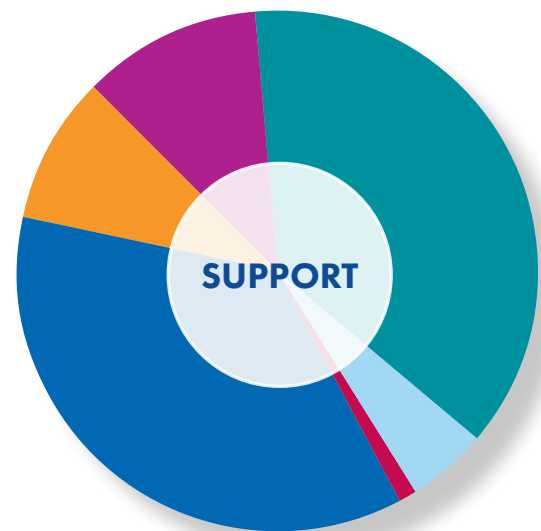


Expense

Instructional Services and Support	\$7,665,000	59%
Scholarship and Financial Aid Grants	2,784,000	21%
Facilities and Depreciation	2,192,500	17%
Miscellaneous	441,700	3%
Total	\$13,083,200	100%

MND Benefactor Support (restricted and unrestricted)

Annual Giving Fund	\$569,000	36%
Grande Gala	\$148,000	9%
New Campaign Pledges	\$181,000	11%
Endowment/Scholarship Investments	\$582,300	37%
Unrestricted Campaign Investments	\$80,200	5%
Athletics	\$20,000	1%
Total Support	\$1,580,500	100%









Honoring our Supporters

Dear Members of the Mount Notre Dame Community:

Each year at this time I am granted the privilege of formally recognizing the incredible financial support of our many benefactors. Every person listed on the following pages has, in some meaningful way, gifted us with their generosity. Your generous financial support of Mount Notre Dame helps provide the necessary resources to advance our mission of educating and empowering young women to recognize and develop their unique capabilities to learn, live, lead and serve.

Some of the lists represent investors who help to ensure MND's stability through gifts to the 2020-21 Annual Fund and Gala while other lists recognize benefactors who support MND's endowment, providing the funding required for our sustainability. Both types of gifts are critical to ensure that all young women who desire an MND Catholic education are provided the financial support needed to realize their dream.

I am sure you join me in looking forward to a post-pandemic year and all the promises it brings.

I close with much gratitude in my heart for all those who continue to believe in, and support, the MND mission and experience.

Very gratefully yours,



Rose A. Eckhoff
Director of Leadership Giving



ANNUAL FUND

Honor Roll of Investors

The President's Circle

St. Julie Billiard Level
\$10,000 or more

Anonymous
Mr. & Mrs. Maurice Coffey
Kathy Kissel McQueen '81
Sisters of Notre Dame de Namur
Mr. Ed Sokolowski
Marianne & Roger Staubach

Regent Level
\$5,000 - \$9,999

Anonymous
Mr. & Mrs. Tom Joseph
Lillian Leahy McCabe '66
Mr. & Mrs. Robert Niehaus
Lisa Harmon Rousseau '80
Mr. & Mrs. Ed Seibert
Barb Mouch Strottman '68
Mary Beth Voshefski Timmel '83
Marianne Roth Tisch '77

Distinguished Level
\$2,500 - \$4,999

Anonymous
Mr. & Mrs. Norb Bruns, Jane Bruns Haslem '81,
Joan Bruns Cahalan '83, Beth Bruns
Cox '86, & Laura Bruns Kane '87
Mr. & Mrs. Gerald Budde
James & Christine Cartledge
Kim & Jim Creeden
Mr. & Mrs. Christopher Elma
Flynn & Company
Judy Moeggenberg Frost '60
Mr. & Mrs. Steve Gerwe
Mr. & Mrs. Doug Healy
Karen Kemper Henson '65
Brian & Peggy Hogan
Sherry Joerg Huddle '65
Tricia Huston Kilgore '91
Eileen Duermit Lakin '62
Mr. & Mrs. Rob Lemmons
Mr. & Mrs. David Mattei
Mr. & Mrs. Dave Meyer
Mr. & Mrs. Nick Recker
Mr. & Mrs. Tony Reed
Mr. & Mrs. Jerry Royce
Evelyn Mae Family Fund of The
Greater Cincinnati Foundation
Mr. & Mrs. Steve Tino
Mr. Rick Tonges
Donna Foltzer Traut '73

Partner Level
\$1,000 - \$2,499

Mary Ellen Stecz Adams '80
Anonymous
Dr. & Mrs. Stephen Beck
Genny Luneack Behne '66
Mr. & Mrs. Greg Bell
Julie Naberhaus Bergmann '80
Kathy Carnes Boylan '56
Jo Ann Schneider Brems '51
Mr. & Mrs. Paul Campbell
Mary McQuaide Connors '77
Liz Costello Cutter '82
Mr. & Mrs. Jim & Karen Day
Mary Lou Busemeyer Dome '63

Margo Hungler Ehemann '83
Mary Anne Blocker Frey '63
General Electric Matching Gifts Foundation
Judy Back Gerwe '78
Mr. & Mrs. Glenn Hartman
Lisa Thomas Hartung '80
Mr. & Mrs. Bob Hauser
Mr. Michael Haverkamp
Debbie Fritz Hayes '80
Hellebusch Charities - Steve & Julie
Mattei Hellebusch '68
Mr. & Mrs. Pat Higgins
Amy Knapmeyer Hilberg '83
Mr. & Mrs. Martin Hollenbeck
Mr. & Mrs. Mark Holly
Barb Rotsching Horner '60
Mr. & Mrs. Tom Hudie
Mr. & Mrs. Bill Hunt
Mr. Tom Lemon & Ms. Lisa Keegan
Susan Shively Kelly '65
Mr. & Mrs. Matthew Kemme
Mary Lou Leugers Kissel '59
Mr. & Mrs. Jim Kroeger
Mr. & Mrs. Mark Kuhlman, Laura
Kuhlman '06 & Sara Kuhlman '10
Dr. Joyce Kupfer-Mulderig &
Dr. James Mulderig
Dr. & Mrs. Alan Laub
Ron & Cheri Lehrter
Mr. Robert Leshnak & Ms. Nancy Nix
Mr. Thomas Leugers
Nancy & Paul Lorenz
Emily Luken '86
Mr. & Mrs. John Maier
Mr. & Mrs. John Meyer
Helen Thorpe Miller '54
Maria Merritt Morris '02
Linda Strite Murnane '70
Rev. Robert A. Obermeyer
Mr. & Mrs. Don Oeters
Ohio CAT
Barbara Schmitz Owen '69
Mr. & Mrs. Hal Pisciotta, Jr.
Joann Obermeyer Rauh '48
Mr. & Mrs. Jeff Risk
Dr. & Mrs. Jerome Rotella
Karen Arlinghaus Rummier '72
Mr. & Mrs. Jim Sauer
Mr. & Mrs. Gerry Schatzman
Mr. & Mrs. Bill Schlater
Mr. & Mrs. Mike Schlater
Dr. & Mrs. Mark Scott
Cookie Seigel Shanklin '61
Cherie Guilfoyle Shannon '72
Jillian Valerius Shute '97
Mr. & Mrs. Sam Strotman
The John A Kupfer & Jean M Kupfer
Family Trust
Mrs. Carol Thomas
Mr. & Mrs. David Tobergte
Mr. & Mrs. Thomas Ujvagi
Mr. & Mrs. Gerald Ulland
Margie Bushelman Warnecke '69
Mr. & Mrs. Jeff Weedman
Mr. & Mrs. John Wendeln
Mr. & Mrs. Steve Wilken
Mr. & Mrs. Tom Young

Prayer for our Benefactors

Good and loving God,
In your generosity you shower us with an abundance of grace, and our hearts are filled with gratitude for your kindness. We humbly ask you to shower your blessings upon the generous benefactors of Mount Notre Dame. Their selfless gifts enable us to carry on Saint Julie's mission to educate young women and empower them to

LEARN of your goodness in the world,

LIVE as faithful witnesses to that goodness,

LEAD others with courage and integrity,

And **SERVE** you always.

May our partners in this mission be inspired by the knowledge that their commitment to your greater purpose and our learning community is a gift which bears fruit for all those whom we serve. . today and in the future.

We make this prayer in the name of Jesus, Son of God and Son of Mary.

Amen

ANNUAL FUND

Honor Roll of Investors

1860 Level \$500 - \$999

Susan Sanders Adams '54
Joanne Bessler '67
Leah Callahan '14
Penny Asbrock Cunningham '67
Mr. & Mrs. Jerry Davis
Mr. & Mrs. Jim Dean
Craig & Kim Drefcinski
Karen Haines Durchholz '75
Audrey Dillon Dwyer '57
Bill & Rose Eckhoff
Anne Ernst '71
Dottie Harmon Eveleigh '77
Fay Elfers Fischesser '49
Sharon Woeste Garry '83
Barbara Bockhorst Gerbus '79
Eileen Parr Gibbs '65
Cathy Hill Glassmeyer '80
Mr. & Mrs. Mike Glatt
Mr. & Mrs. Truitt Graue
Dr. & Mrs. Mike Guenther
Diana Condeni Haskell '67
Katie Heenan '94
Amy Lang Hessell '97
Erin Devine Hofmann '91
Mr. & Mrs. Michael Hoyt
Dr. & Mrs. Tom Ionna
Rachel Klosterman Joebgen '08
Johnson & Johnson
Dianne Rittenhouse Juenger '70
Mr. Tom Klosterman
Mr. & Mrs. Scott Kreider
Dr. & Mrs. David Malof
Chris & Emily Geier Maupin '99
Mr. & Mrs. John McPhillips
Mr. William E. Menkedick
Michelle Williams Metzler '94
Nancy Glassmeyer Meyrose '69
Mr. George Milbourn
Mary Thomas Miller '67
Steve & Mary Frank Minnis '75
Mr. & Mrs. Daniel Molina
Mr. & Mrs. David Moss
Mr. & Mrs. David Muha
Mr. James Nordlund
Nancy Doerger Ollier '58
Sylvia Lacher Osterday '56
Kathy Fredricks Oswald '65
Mr. & Mrs. Dave Parry
Mr. & Mrs. Dick Piening
Dr. & Dr. David Plas
Mr. & Mrs. Ken Reeder
Robert W. Baird & Co. Inc.
Mr. & Mrs. Nick Rosian
Cheryl Bellman Schrage '71
Jackie Schwarber '79
Jeanne O'Connell Sharpe '63
Andrea Ventura Smedley '95
Mr. Matt Sokany & Mrs. Michele
Macedonio
Mr. John Stigler
Sharon Strizak '08
Mr. & Mrs. James Tepe
Mr. & Mrs. Kenneth Thomas
Mr. & Mrs. John Tomasella
Michele Feliberty Trivedi '86
Amy Gardner Tyler '97
Julie Matre Weaver '73
Pam Wagner Wilson '65
Mary Lynn Woebkenberg '70

Foundress Society \$250 - \$499

Mary Agricola '85
Mr. & Mrs. Jonathan Albers
Linda Sliter Bird '65
Kelli Brown '89
Amanda Cook Brueggemeier '95
Mrs. Pat Burwinkel

"We were honored to serve as the 2020-21 MND Annual Fund Chairs. From a first-class education to the outstanding extra-curriculars, MND is clearly committed to providing the very best for its students."

**John and Tricia Huston
Kilgore '81**

Mr. & Mrs. Jim Collins
Pam Albert Corbin '87
Sue Grau Dempsey '72
Mr. & Mrs. Jim Donnellon
Paula Isenmann Down '65
Mrs. Winnie Eckhoff
Mr. Dennis Eling
Mrs. Carolynn Ficke
Mr. & Mrs. Bill Foltyn
Alice Faulhaber Frank '66
Jennifer Jung Gallo '85
Mr. & Mrs. Michael Gerbus
Mary Bashe Govan '71
Gumbleton Family Charitable Trust
Molly McQuaide Gusweiler '74
Mr. & Mrs. Matt Guye
Marie Hahn '98
Mr. & Mrs. Jim Harold
Mr. & Mrs. Kevin Havens
Janice Seurkamp Hayes '64
Dr. Thomas Hayes & Mrs. Maggie Gajus
Mr. & Mrs. Christopher Hersey
Mr. & Mrs. Brent Hill
Joyce Eling Hoerst '61
Mr. & Mrs. Steve Honerlaw
Hormel Foods
Kathy Haas Huston '67
Mr. & Mrs. Mark Johnston
Holly Jones '03
Mr. & Mrs. Rick Jones
Kate Hoyt Kamel '03
Barbara Fasce Kelly '66
Terri Gertz Kelsey '84
Terri Butz Kerley '82
Beth Nettleton King '69
Mr. & Mrs. Thomas Kloenne
Mr. & Mrs. Roger Klug
Mr. & Mrs. David Koch
Mr. & Mrs. Bill Kuhlman, Jr.
Teri Cassidy Lacey '81
Karen Logan '83
Mary Ann Parnell Maines '61
Mr. & Mrs. Brian Mansfield
Mr. & Dr. Michael Marklay
Mr. & Mrs. Alan Martin
Ms. Catherine Marvel
Mr. & Mrs. Paul Mason
Rose Ann Cooper Matonis '65
Audrey Eggenberger McCray '09
Jaime Kneer McDermott '96

Maureen Marous Mears '80
Charlotte Buchert Melish '62
MND Student Body
Mr. & Mrs. James Monton
Mary Steckler Moore '79
Andrea Backscheider Neuwirth '06
Mr. & Mrs. Tom Niehaus
Marianne Schurig Nishimori '79
Mr. & Mrs. Mark Noschang
Mr. & Mrs. Robert Oeters
Gretchen Osner '61
Mr. & Mrs. Dan Pelzel
Mallika Pereira '92
Mr. Trey Pettibone
Shirley Schwieter Plahovinsak '71
Mr. & Mrs. Daniel Rack
Dr. & Mrs. Gary Ray
Mr. Jerry Robb
LouAnn Beresford Robb '65
Mr. & Mrs. Don Roberts
Andrea Cinquina Rosenthal '80
Jana Roszkowski '96
Debby Steckler Routt '75
Emily Ryan '04
Mr. Louis Santoro
Mr. & Mrs. Rick Schaeper
Mr. Robert L. Sicking, Jr.
Mr. & Mrs. Gary Smoller
Mr. & Mrs. Ken Sovern
Mr. & Mrs. Darrin Steinmann
Mr. Patrick Taylor
Pam Thiemann '82
Mr. & Mrs. Thomas Urban
Lucy Sanders Veid '56
Vonderhaar's Catering
Mrs. Ashley Woodside
Mr. & Mrs. Tom Young
Julie Hagedorn Zude '90, M.D.

MND Society \$100 - \$249

Karen Schwartz Aielli '76
Phyllis Wilson Aileen-Donohew '66
Jane Gilligan Albers '61
Sue Maly Albert '60
Geri Cook Alder '72
Jeanne Emerson Allen '81
Maggie Altimier '08
Amazon Smile
Mary Ann Adleta Amyx '64
Beth Antenucci '82
Angie George Arengo '94
Mr. & Mrs. Ed Armbruster
Samantha LaBarbera Arrowood '06
Mr. & Mrs. Jason Arszman
Mr. & Mrs. Paul Asbrock
Mr. & Mrs. David Bach
Mr. Ronald Back
Mr. & Mrs. Thomas Badinghaus
Valerie Woll Badinghaus '76
Connie King Baker '67
Christy Hoekzema Banke '87
Terry McQuaide Barbara '79
Kathy Tholen Bath '61
Dr. & Mrs. David Bauman
Dusty Veid Bechtel '76, DVM
Diane Bechtold '70
Carly Mears Beck '10
Martha Bien Beerman '60
Ms. Amy Benetti
Kelly Heenan Bergmann '99
Jeanne Craven Berns '61
Mr. & Mrs. Paul Betz
Mr. & Mrs. Dave Bingham
Mr. & Mrs. Doug Black
Mary Ann Mogan Blome '52
Rachel Frank Bluhm '11
Mr. & Mrs. Kevin Blum
Christine Glatt Bode '89
Mr. & Mrs. Dan Boeckman
Mr. & Mrs. Rick Bohne
Sue Buerger Bonnette '60
Chloe Meyer Braun '11
Mr. & Mrs. Brian Brehm
Mr. & Mrs. Clyde Brenner
Mr. & Mrs. William Breyer
Eileen Sauer Breyler '75
Cindy Wagner Bricking '92
Lydia Brinkmann '16
Mr. & Mrs. Tom Brinkmann
Charlene Ackley Brisben '64
Stacy Gigliotti Broenner '94
Terry Brotherton '74
Mr. & Mrs. David Brown
Mrs. Maryhelen Browning
Mr. Robert Browning
Denny DuPriest Brune '71
Michelle Grammel Buehler '82
Sharon Siefert Bukaty '81
Kelly Cutter Burger '12
Caley Burke '00
Nicole Gertz Burke '94
Mr. & Mrs. Tom Burks
Dr. & Mrs. Darrell Burnett
Vicki Harmeyer Burris '79
Mr. & Mrs. Joseph Butkovich
Phyllis Sherrer Butterworth '71
Paula Kennedy Call '70
Mr. & Mrs. Dave Campbell
Annie Carl '97
Kaylee Carmack '23
Mr. & Mrs. Jim Carroll
Amy Goddard Celis '02
Mr. & Mrs. John Cengel
Mary Back Chaney '69
Kate Wright Chisholm '82
Mrs. Barbara Christman
Faye Clements '77
Erin Satzger Clemons '04
Coca-Cola Bottling Co.
The Coffey Family
Mr. John Cole
Mr. & Mrs. Tom Collett
Caitlin Blaut Comer '08
Eileen Albrinck Compton '67
Carolyn Planitz Conboy '65
Mr. & Mrs. Michael Conlon
Kathy Marous Contadino '79
Marlene Burckard Cook '69
Mr. & Mrs. William Corbett
Linda Cornell '71
Sue Geyman Cortesi '62
Frances Gessing Costello '45
Linda Schmidt Costura '65
Mr. & Mrs. David Craft
Jean Schneider Crockett '69
Danielle Wampler Culbertson '03
Amy Sutliff Curtis '80
Kathy Ryan Czerwonka '80
Kathleen Daly '64
Lori Shelley Daniels '98
Mr. & Mrs. Karl DeBord
Mr. & Mrs. Chris DeLuca
Chris Lynd Deters '83
Jill Devine '84
Mr. Albert Dierckes, Jr.
Mr. & Mrs. Michael DiLeonardo

Honor Roll of Investors

Rachael DiLeonardo '12
 Laura Dittrich '09
 Mr. & Mrs. William Dodds
 Mary Lou Smith Dollenmayer '56
 Cece Bucheit Donovan '64
 Meghan Inna Donovan '98
 Gail Rath Dorsey '87
 Joan Beeber Doyle '78
 Mr. & Mrs. John Drayer
 Madeline Duckworth '10
 Mary McGing Duckworth '75
 Cheryl Angst Duncan '82
 Kristi Duncan '14
 Ashley Towle Dutton '10

Barbara Gibbons Greiwe '77
 Jayne Fehring Grimm '77
 Dr. & Mrs. Tom Grimm
 Diana VonDenBenken Grinkemeyer '76
 Karen Kerkhoff Gromada '68
 Amy Heenan Gruppo '89
 Sarah Arlinghaus Gulley '00
 Elizabeth Guye '13
 Cheryl Giesler Haag '64
 Kathy Schulkers Harmeyer '69
 Lynne Bath Harris '82
 Mr. & Mrs. Paul Harris
 Rosemary Pelstring Harris '69
 Jane Bruns Haslem '81

Mr. & Mrs. Jeff Hudie
 Mrs. Carol Huggard
 Julie Baron Hughes '62
 Mr. & Mrs. Jason Huiet
 Tricia Reed Humphreys '88
 Ben & Reen Hunt
 Emily Gruber Hurley '95
 Mr. & Mrs. Matt Ipsa
 Sarah Thamann Irely '94
 Lisa Koebbe Jamison '98
 Carolyn Eggenberger Jansen '10
 Julie Jasontek '88
 Bob & Lisa Wagner Jennings '93
 Nancy Vonderheide Johns '63
 Cindy Heckel Johnson '79
 Patrice Woll Jones '71
 Cindy Judd '73
 Laura Griga Julian '80
 Mr. & Mrs. Leonard Kaes
 Pam Gerstemeier Kalb '88
 Mary Ann Fath Kalla '63
 Jennifer Teismann Kappler '65
 Mr. & Mrs. Richard Kemp
 Ms. Suzanne Kemper
 Ms. Joan Kennedy
 Robyn Kerley '12
 Linda Theis Kibblewhite '74
 Debbie Medosch Kirkpatrick '77
 Ms. Kathy Kishpaugh
 Linda Ferkenhoff Knapmeyer '61
 Judi Huber Knecht '61
 Joan Leinberger Koebel '62
 Lori Sauer Konkoly '85
 Mrs. Dianne Koop
 Donna Krabbe '67
 Mr. & Mrs. John Kraimer
 Mr. & Mrs. Joe Krause
 Pat Blocker Kremers '71
 Mary Kay Goldschmidt Kristofferson '71
 Mr. & Mrs. John Kuempel, Sr.
 Judy Brigger Kuethe '60
 Judy Wirtz Kuhl '62
 Mrs. Marjorie Kuhlman
 Michelle Lacey '04
 Mr. & Mrs. Doug Lammers
 Mrs. Margaret Lang
 Rose Lavelle '13
 Barb Brenner Laxton '68
 Tina Houston Leder '96
 Eileen Legaspi-Wilson '05
 Barbara Eveslage Lehrter '62
 Sheila Voegele Lehrter '70
 Julie Ebbeler Leonard '85
 Teresa Harmon Leugers '75
 Mary Kay Doerger Levesay '65
 Janet Carrigan Lindle '62
 Ellen Eberenz Long '91
 Teresa Lukey Long '01
 Vada Patterson Love '71
 Julie Donnellon Lovell '77
 Mr. & Mrs. Jim Luers
 Anita Lukey '04
 Mr. & Mrs. Steve MacDougal
 Erin Mackey '07
 Mr. & Mrs. Larry Mackey
 Mr. & Mrs. Robert Mackey
 Mr. & Mrs. Ira Madden
 Sophia Madden '23
 Cathy Bressert Magold '91
 Angela Nardini Markle '97
 Ellen Edelman Marks '78
 Tori Shawver Marshall '00
 Mrs. Terri Mastin
 Maria Mattei '12

Martha Schmitt McCarthy '58
 Pam Harmeyer McCormack '68
 Mr. & Mrs. John McElwee
 Kendall McKee '14
 Mr. & Mrs. Shawn McKee
 Ms. Donna McKenna
 Karen Albert McNally '84
 Linda Fladung Meiser '65
 Pat Meisner '66
 Judy Janson Mellott '53
 Mr. & Mrs. Norbert Menke
 Sue Cirino Merland '65
 Cindy Reagan Miller '70
 Mrs. Rosemarie Moenster
 Tara Nahrup Morris '97
 Allison Jostworth Moser '95
 Mr. & Mrs. Kevin Mulcare
 Mackenzie Mulcare '20
 Mr. & Mrs. Rick Mullen
 Molly Mullinger '10
 Mr. & Mrs. Joseph J. Murphy
 Jeri Ihendorf Murray '70
 Michele Kroth Naish '74
 Maryann Nardini '76
 Lauren Costello Neises '06
 Leslie Meyer New '77
 Krista Paas Nicholas '90
 Dr. B. Gayle Niehaus
 Mr. & Mrs. Bernard Niehaus
 Theresa Kuntz Niehaus '82
 Mr. & Mrs. Doug Nunn
 Diana Weinheimer Oberschmidt '74
 Annette Wuennemann Obert '67
 Mary Potticary Obert '75
 Mr. & Mrs. Mark Oelrich
 Mr. & Mrs. Frank O'Neill
 Lindsay Owens '06
 Mrs. Francie Pavey
 Mr. & Mrs. Anthony Pennisi
 Julie Balbach Peters '78
 Sue Carnes Peters '58
 Tami Hoekzema Peters '85
 Mr. & Mrs. Robert Pettibone
 Barbara Pflanz '72
 Mary Alice Pharo '43
 Kelly Pontius '06
 Gail Glassmeyer Pryse '81
 Anne Schramm Purdue '79
 Mrs. Joan Rakel
 Mindy Reed-Morrice '11
 Sarah Bohlen Reigle '10
 Roxie Brotherton Reinert '69
 Mr. & Mrs. Steven Reutelshofer
 Susan Bradfield Reyher '67
 Mr. & Mrs. Patrick Richards
 Mrs. Helen Robb
 Jane Karlak Robbins '97
 Mr. Bernard Roberts
 Carol Williams Roberts '80
 Sherry Mack Roebel '84
 Cathy Bushelman Roelker '71
 Mr. & Mrs. Donald Rogers
 Teri Perin Rohan '76
 Marianne Schwertman Rohlfs '74
 Emily Rotella '08
 Debbie Hennel Rouse '86
 Liane Rousseau '08
 Linda Morgan Rubens '66
 Mr. & Mrs. Jim Rudol
 Mr. & Mrs. David Rudy
 Theresa Magro Ruebusch '68
 Mary Sedmak Ruscher '78
 Nancy TenBieg Ryan '52
 Diane Buer Ryder '75



Mrs. Cynthia A. Eckerle Bertke
 Mary Ann Herman Eckert '68
 Mr. Ray Eckes
 Janet Steman Edelmann '51
 Diane Sauer Eisele '65
 Mr. & Mrs. Al Eling
 Joyce Hoerst Eling '67
 MJ Eling '66
 Mary Wersel Engel '62
 Sue Mahsling Erdman '77
 Mr. Jack Ernst
 Mr. & Mrs. Doug Ernstes
 Pamela Porta Ewton '76
 Lisa Schoettker Fogin '79
 Susan Schmidt Fahrmeier '65
 Katie Fasola '16
 Carol Moeggenberg Faulhaber '63
 Mr. & Mrs. Gregg Feltrup
 Mr. & Mrs. David Filipowski
 Jane Moeggenberg Fink '64
 Kathi Klingenberg Fitzpatric '70
 Mr. & Mrs. Henry Fleck
 Mary Ann Twidale Flynn '78
 Dr. James & Dr. Lauren Fortman
 Mr. & Mrs. Kevin Fox
 Mr. & Mrs. Donald Frericks
 Katie Weisbrod Freson '06
 Mr. & Mrs. Dave Frey
 Joanne Pfister Fuchs '62
 Patricia Rouse Gabriel '56
 Krista Gadzala '85
 Caroline Gallo '15
 Concetta Overberg Geraci '76
 Connie Gerdes '83
 Mr. & Mrs. Richard Gerwe
 Mrs. Karen Gerwel
 Pam Gibbons '66
 Andrea Knollman Gier '04
 Joyce Moeggenberg Gilbertson '59
 Mr. & Mrs. Bill Goslee, Jr.
 Wendy Durham Gottenbusch '89
 Danielle Meyer Greaves '04
 Kelsey Green '13

Maddie Haubner '13
 Madeline Cavanaugh Hautz '57
 Julie Miller Haverland '65
 Jacki Hertenberg Heard '66
 Pam Keller Heenan '65
 Molly Heister '10
 Roseann Lichtenberg Hemauer '63
 Kim Kappler Hewitt '92
 Mrs. Jeanette Hildebrandt
 Molly Hildebrandt '11
 Mr. & Mrs. Rob Hildebrandt
 Anne Harsch Hinman '68

Are you looking for a simple, seamless, and budget-friendly way to financially support MND? Consider setting up a monthly or quarterly RECURRING GIFT! It's so easy!

www.mndhs.org/support

Mr. & Mrs. Robert Hinman, Jr.
 Katie Hoekzema '97
 Marianne Fassnacht Hoekzema '65
 Bridget Hoerst Hoffman '95
 Mr. & Mrs. Ken Hoffman III
 Mr. Joe Holtman
 Mr. Michael Holtman
 Nancy Kettler Hopkins '84
 Vince & Julie Hopkins
 Mr. & Mrs. Scott Home
 Bridget Grau Hoskins '08
 Kristen Robinson Hoskinson '01
 Mr. & Mrs. Nick Hosmer

ANNUAL FUND

Honor Roll of Investors

Connie Samuelson '71
 Heather Doten Sauer '93
 Jan Feldhaus Savage '57
 Mr. & Mrs. Chris Schlichter
 Mr. & Mrs. Greg Schlick
 Barb Fern Schmidt '56
 Peggy Schmitz Schmidt '84
 Mary Carole Storer Schneider '79
 Mr. & Mrs. William Schneider, Jr.
 Mr. & Mrs. J Schomaker
 Catherine Schulte '79
 Mr. & Mrs. Gary Schulte
 Mr. & Mrs. Chris Schuppe
 Cristina Seda-Hoelle '92
 Kristin Heskamp Seiler '98
 Alexa Weston Shanahan '08
 Mr. & Mrs. Daniel Shaw
 Mr. & Mrs. Leslie Shawver, Jr.
 Joan Amorini Sheehan '72
 Kathy Beimesche Sheldon '91
 Mr. & Mrs. Tom Sheldon
 Pam Broerman Shelton '72
 Caitlin Shipp '12
 Mrs. Nora Shumrick
 Shannon Storm Sieg '93
 Mr. & Mrs. Brent Sitarski
 Jennifer Strasser Smith '94
 Mr. & Mrs. Keith Smith
 Mr. Michael Smith
 Nancy Middendorf Smith '60
 Stephanie Seibert Smith '00
 Terri Montag Smith '73
 Rose Ross South '86
 Ellen Mettey Spaeth '79
 Kristin Wiwi Spatz '87
 Pat Lienemann Sphar '66
 Cheri Cunningham Stacey '71
 Mrs. Kathleen Stack
 Angie Stallo-Kramer '91
 Mr. & Mrs. Dave Statzer
 Debbie Reder Stebelton '67
 Pam Schneider Steinmetz '87
 Dawn Stiens '85, DVM
 Sis Eysoldt Stofko '62
 Lois Glaser Stolz '49
 Jackie Segrist Strain '64
 Barb Kathman Strauss '72
 Sr. Rita M. Sturwold, SNDdeN
 Kelly Tholke Sullivan '98
 Annette Hilvert Sussli '81
 Mr. & Mrs. Bill Tackus
 Holly Janson Tanner '79
 Christina Vangeloff Tarnowski '05
 Connie Judd Taylor '71
 Joy Wilson Thaler '74
 Mrs. Katie Thiemann
 Sheila Gillespie Thompson '66
 Caitlin Kloppenburg Timmons '09
 Mr. & Mrs. John Tishaus
 Dr. & Mrs. Drake Tollefson
 Jessica Towle '15
 Martha Flynn Trydahl '97
 Mary Helen Laumann Turcott '62
 Karen Bubak Udom '96
 Sandy Villari '70
 Eileen Corcoran Von Holle '64
 Nancy Lutz VonBenken '65
 Jen Vonderbrink '11
 Mary Ashbrock Vonderbrink '76
 Kathy Morgan Vonderhaar '77
 Wilma Rohlfs Vonderhaar '63
 Ms. Kathleen Vorholt
 Ms. Judith Wagoner
 Mr. & Mrs. James Wahl

Donna Mustard Walsh '72
 Mr. & Mrs. Patrick Walsh
 Julie Wade Walulik '92
 Gloria Estep Wamsley '67
 Mr. & Mrs. Greg Waning
 Katie Rahe Warnecke '98
 Miss Angela Watson
 Tammy Weber-Ridener '89
 Mr. & Mrs. Chad Weikert
 Mr. & Mrs. Marvin Weikert
 Lynn Schatzman Welch '94
 Jackie Donnellon Welling '76
 Janet Welling '83
 Lynn Ostholthoff Welty '77

Are you grateful for your MND education, or that of your daughter or granddaughter?
 Consider a gift to pay it forward!

Kathryn Wesseler '68
 Helen Obermeyer Whalen '47
 Mr. & Mrs. Steven Wiesman
 Katie Margolies Wietmarschen '98
 Angie Creeden Wilking '92
 Kathy Hughes Wilking '73
 Anne Vonderbrink Wilkinson '78
 Mary Vennemeyer Williams '53
 Margo Wiltshire '90
 Barbara Benken Wimprine '64
 Mr. & Mrs. Robert Winterman
 Kathy Ries Wissel '70
 Mr. & Mrs. Scott Wittman
 Barb Zwick Wolf '72
 Mr. & Mrs. Daniel Wolf
 Linda Pate Wolf '69
 Audrey Wolfer '21
 Mr. & Mrs. Michael Wolfer
 Tricia Mullen Wolfer '93
 Nancy Pesa Wolke '61
 Ellie Wolterman '20
 Julie Holthaus Woodward '76
 Katie Markgraf Wright '10
 Debbie Rieder Yee '70
 Mr. & Mrs. Raymond Yunkunis, Jr.
 Dorothy Benken Zahner '71
 Cheryl Frey Zaidan '71
 Mr. Martin Ziegler

Friend \$99 & Below
 Sue Allen Ackley '70
 Helene Backscheider Adkins '04
 Allison Kreiner Albertz '96
 Mary Palopoli Albright '63
 Mr. Dennis Albrinck
 Sue Malloy Albrinck '64
 Lisa Scheuerle Alexander '89
 Jeanne Lewe Alsmeyer '51
 Mr. & Mrs. Peter Anderson
 Anonymous

Denissa Ariestanto '22
 Jeanette Teismann Arlinghaus '68
 Mary Beth Donahue Armstrong '77
 Donna VonHolle Arnold '70
 Joan Young Arnold '81
 Maria Gallagher Arnold '11
 Pat Merkle Artist '68
 Mr. Frank Auciello
 Jennifer Babak '05
 Kim Back '94
 Lydia Backscheider '11
 Ms. Elizabeth Badinghaus
 Barb Bailey '69
 Hannah Bailey '21
 Donna Corsmeier Bain '69
 Kim Hardesty Baker '03
 Megan Condit Balbach '08
 Claudia Banke '21
 Karen Back Bankemper '84
 Nancy Skillman Barger '59
 Mr. & Mrs. David Barnes
 Diane Brisben Barnes '61
 Julia Barnes '19
 Kim Wagner Barrett '05
 Caroline Batt '21
 Gerry Johnson Bauman '60
 Karen Obert Bayliff '94
 Lori Jung Bean '94
 Annabel Beatty '21
 Ann Becker '71
 Sr. Paula Marie Becker, SNDdeN
 Ruth Bedinghaus '69, SNDdeN
 Mr. John Beiting
 Ruth Baillargeon Beiting '71
 Mr. & Mrs. Gerald Beitman
 Julianne Smith Bell '07
 Kara Friedmann Bell '09
 Mary Wilz Bell '68
 Lindsey Benhase '19
 Nancy Bushelman Berling '76
 Pat Topmiller Berryhill '65
 Janet Bessler '64
 Rebecca Clubb Bidinger '88
 Jennifer Biele '08
 Mr. & Mrs. Edward Billiter
 Nadia Bingham '21

Jamie Boeckman '99
 Stacy Boeckman '00
 Katie Bohlen '13
 Mr. & Mrs. Dan Bohlen
 Dianne Glorius Boland '62
 Emily Camp Bonar '98
 Ms. Amy Bonino
 Maria Bonino '16
 Molly Bonino '17
 Mr. & Mrs. John Bowblis
 Ms. Margaret J. Bowen
 Julie Eling Bower '94
 Nancy Knapmeyer Bowles '87
 Kaitlin Corbett Bowlin '06
 Kelly Friedmann Brady '05
 Beth Vonderbrink Brandner '05
 Katie Hostiuck Branson '01
 Mrs. Shelly Brauer
 Stephanie Lichtenberg Brausch '91
 Grace Brecht '20
 Allison Muennich Bredestege '06
 Mary Pierce Brenner '98
 Mr. & Mrs. Robert Brinck
 Beth Amorini Brinkman Dugan '79
 Mary Brodbeck '62
 Julie Lichtenberg Bronner '91
 Rachel Bronner '14
 Rosanne Mersch Brooks '70
 Betsy Brothers '69
 Holly Laub Brown '11
 Bev Reder Brownfield '72
 Mary Kohne Brownfield '82
 Mr. & Mrs. Charles Browning
 Gina Werne Brownstead '87
 Beth Schuster Brozzart '68
 Amy McGrath Bruno '85
 Rose Boehm Bruns '69
 Teri Ulland Buechit '94
 Callie Buck '13
 Catherine Buck '14
 Emily Buck '16
 Ms. Constance Buckley
 Mr. & Mrs. Thomas Buckley
 Mr. Paul Buelterman
 Stacey Buescher '05
 Sue Reilly Buescher '80



Tina Linesch Black '85
 Leah Black '20
 Megan Witte Black '04
 Mrs. Diane Blazer
 Mrs. Kenyen Bloe
 Jennifer Jacob Blomer '96
 Judy Cremering Blomer '66
 Betsy Hoekzema Bobst '90

Patti Gray Buisson '70
 Nikki Robinson Bunch '00
 Linda Harmon Burgdorf '78
 Mr. & Mrs. Jason Burkey
 Jessica Burris '15
 Colleen Butler '11
 Erin Cagle '18
 Kayla Cagle '14

Honor Roll of Investors

Mr. & Mrs. William Cagle
 Diana Woebkenberg Campbell '62
 Pat Brotherton Champion '71
 Kara Kindel Canfield '09
 Kimberly Capehart '06
 Chris Barnhorn Carozzoni '78
 Mrs. Carol Carpenter
 Allison Carr '12
 Ms. Muriel Casavant
 Sarah Kohl Chasteen '11
 Mr. Kenneth Chatlos
 Mr. & Mrs. David Cherry
 Jennifer Rohan Christensen '05
 Amanda Clark '19
 Jeanne Finen Clark '47
 Linda Wiesner Clark '66
 Mr. & Mrs. Douglas Clarke
 Maddie Clarke '23
 Kristine Wersel Coe '07
 Dorie Coggin '17
 Brianne Harrison Cohen '11
 Elena Colby '16
 Mr. & Mrs. Ron Combs
 Lindsey Romes Compton '04
 Caitie Connell '14
 Mr. & Mrs. James Connell II
 Missie Mitsch Conner '88
 Mary Beth Kreidler Conover '60
 Amie Adkins Cook '06
 Mr. & Mrs. Doug Cooper
 Ms. Barbara Copeland
 Angela Santel Copsey '03
 Mrs. Shannon Corbin
 Ms. Eileen Corder
 Maureen de St. Aubin Corgiat '03
 Liz Keane Coughlin '85
 Barb Hesse Coyle '68
 Elaine Crable '67, PhD
 Mrs. Joan Crable
 Eileen Thomas Creeden '71
 Rachel Creeden '19
 Ellen Crema '10
 Autumn Crockett '21
 Lindsay Cronin '13
 Pat Hoerst Crowder '66
 Candace Crowley '11
 Anissa George Cundall '97
 Caroline Cusick '15
 Mary Jo Albertz Custer '53
 Kimberly Cutter '09
 Rachel Creevy D'Errico '08
 Dottie Meyer Dailey '61
 Mr. & Mrs. Michael Daley
 Nora Daley '23
 Ms. Patricia Dannemiller
 Mr. & Mrs. Jim Darland
 Erin Day '99
 Mr. & Mrs. Jerry Day
 Kelsey Day '15
 Amy Dean '14
 Patty Miller Dean '71
 Vicki Bollmer Decker '64
 Caroline DeGroff '17
 Mr. & Mrs. John DelRosso
 Mr. & Mrs. Paul Derrick
 Mr. & Mrs. John DeVore
 Samantha DeVore '15
 Mr. & Mrs. Tom Dickert
 Charissa Diekmeyer '95
 Lisa Ulmer Dierkers '79
 Mrs. Joan Dierkers
 Nancy Collins Diesel '60
 Lauren DiNardo '11
 Susan Lesley Dixon '64

Sarah Dodds Doecker '95
 Mr. William Doering
 Ann Becksmith Donahue '75
 Mr. & Mrs. Gerry Donahue
 Ms. Ann Drayer
 Payton Drefcinski '18
 Skylar Drefcinski '16
 Dianna Corsmeier Driscoll '61
 Sarah Drumm '14
 Ms. Janis Dugle
 Mr. & Mrs. Roger Dunigan
 Kathy Brausch Dunn '63
 Ms. Ayasa Durant
 Diane DeSalvo Duritsch '62
 Mr. & Mrs. Harold Eberenz
 Mary Jane Klingenberg Ebert '72
 Mr. & Mrs. Edward Eckert
 Hanna Eckhoff-Kremer '08
 Mr. & Mrs. David Eckley
 Kacy Eckley '15
 Vicki Mastruserio Eckstein '74
 Emily MacLeod Edwards '06
 Mary Effler '74
 Margaret Ehlen '20
 Jenna Ehrler '18
 Kelly Kirby Ehrnschwender '99
 Amy McMahan Elam '11
 Laura Elliott '08
 Katie Kubale Epling '04
 Chris Kolkmeier Ernst '89
 Mr. & Mrs. Gregory Ernst
 Annie Wessendarp Ester '09
 Laura Ostholthoff Estes '86
 Betty Vonderhaar Evans '65

Join over 70 MND families that have established an endowed scholarship in their name. It makes an incredible impact on the future of MND and the students it benefits. This type of investment lasts forever!

Visit www.mndhs.org/scholarships for more information.

Vickie Ornella Evans '65
 Ann Blomer Everly '87
 Hannah Eversole '21
 Mr. & Mrs. Lonnie Eversole
 Ellie Fagin '24
 Ann Eling Falci '91
 Mr. & Mrs. Andrew Falk
 Ms. Victoria Faller
 Amy Durchholz Farr '80
 Courtney Fasola '13
 Kennedy Feathers '21
 MacKenzie Feathers '14
 Bridget Felczan '18
 Emily McCabe Feldman '02
 Julia Feldmann '20
 Cindy Turney Feltnan '79
 Mr. Joseph Ferguson
 Vicki Meno Ficke '73

Beth Bause Finn '85
 Jacki Fischer '85
 Susan Schmidt Fischesser '65
 Lilly Fisher '18
 Clare Stauss Fister '61
 Erin Flanagan '17
 Eileen Gruener Flege '61
 Megan Gerwel Forbis '95
 Caroline France '20
 Veronica France '18
 Yvonne Molina France '91
 Mr. & Mrs. Mark Frank
 Brooke Frazier '17
 Anne Scollard Fredrickson '75
 Angela Ernst Frith '92
 Mr. & Mrs. Fred Fritz
 Lily Fritz '21
 Elizabeth Deutsch Fuhler '11
 Judy Poppe Fulcher '85
 Alexis Cox Fulton '02
 Linda Heile Fye '71
 Ms. Kaye Gaffney
 Laney Gallagher '16
 Michelle Richter Ganim '78
 Debbie Knueven Gannaway '70
 Molly Knapmeyer Ganz '93
 Mr. & Mrs. Carlos Garcia
 Melissa Bobinski Garris '05
 Emma Garry '14
 Ms. Jean Garry
 Judy Wallet Gates '60
 Mr. & Mrs. Jim Geers
 Pat Franer Geeslin '66
 Bonnie Gronefeld Geiger '73
 Danielle Schuckman Geiman '02
 Isabella Geraci '20
 MacKenzie Gerdes '13
 Mr. & Mrs. David Germano
 Sophia Germano '21
 Connie Klopmeier Gerwe '60
 Karli Gerwel '21
 Lauren Anderson Gesenhues '08
 Mrs. Carol Gessing
 Kathy Gibbons '76
 Kelley Gilreath '00
 Taylor Mitchell Gilmer '01
 Mr. & Mrs. Todd Glass
 Tracy Ulland Goldie '91
 Julie Sicker Goldman '70
 Denise Baum Goldschmidt '86
 Britta Halpin Golueke '06
 Mr. & Mrs. Bradford Gosky
 Megan Goslee '14
 Mr. & Mrs. Martin Goss
 Caroline Gott '19
 Marlene Lacher Grabel '63
 Meredith Murphy Grasso '95
 Caroline Graue '20
 Cynthia Gray '81
 Mr. & Mrs. Jim Gray
 Jill Horner Greene '83
 Carol Voegele Greenwood '60
 Beth Gregory '06
 Jocelyn Gregory '97
 Marcia Maugle Greiner '59
 Jessie Gries '16
 Mr. & Mrs. Thomas Gries
 Lisa Ostholthoff Griffin '90
 Kate Anderson Grimm '06
 James & Donna Groene
 Libby Carroll Groskopf '91
 Penny Mueller Guerity '66
 Ms. Andrea Guerrette
 Sherry Brofft Guess '64

Mrs. Rita Gulette
 Kelly Gurren '12
 Leah Gutzwiller '19
 Mary Angela Guye '18
 Mr. & Mrs. David Hack
 Debbie Roma Haines '74
 Mr. & Mrs. Scott Hale
 Judy Donnellon Hall '85
 Peg Auciello Halpin '79
 Skylar Halpin '08
 Ms. Julie Hamilton
 Jane Cravaack Hanna '63
 Mrs. Ginny Hansman
 Zoey Harig '20
 Samantha Harold '21
 Kate Harrow '97
 Dottie Hessler Hathorn '67
 Beth Warning Haubner '11
 Patty Rolver Haumesser '73
 Devin Hayes '08
 Sarah Heard '20
 Jenna Vanden Eynden Heck '04
 Katie Walker Hefner '05
 Megan Heidel '10
 Mr. & Mrs. Ken Heile
 Vicky Eiser Heile '81
 Mr. & Mrs. Pete Heister
 Ms. Betty Heldman
 Irene Westerkamp Herbers '55
 Ava Puthoff Herbig '78
 Ruby Steele Herbst '82
 Mr. & Mrs. Bob Herman
 Mary Jo Noschang Hertlein '84
 Bri Heverin '18
 Julie Reynolds Hicks '85
 Mr. & Mrs. Larry V. Hill
 Katie Hindersman '18
 Bryn Henry Hoctor '05
 Julia Hoefling '19
 Becky Hoerst '00
 Devon Hoffman '19
 Morgan Hoffman '17
 Tara Collett Hogel '03
 Megan Florea Holcomb '05
 Nancy Pierce Hollmann '77
 Carolyn Hoog Holterman '64
 Mr. & Mrs. Dave Holthaus
 Mrs. Elaine Holtman
 Linda Muennich Homan '71
 Mr. & Mrs. Butch Homoelle
 Kathryn Hook '12
 Abbey Hopkins '11
 Mrs. Margaret Hornschemeier
 Carolyn Christensen Horst '63
 Amy Horton '19
 Sarah Horton '19
 Mr. & Mrs. Wayne Hoskins
 Ms. Lisa Houser
 Sue Lohmueller Howard '72
 Nancy Wohleber Hoye '69
 Mr. & Mrs. Kip Hubbard
 Debbie Bosse Hufft '80
 Charmaine Asbrock Hughes '62
 Janet Kellogg Huninghake '60
 Mr. & Mrs. Dan Hunt
 Paula George Hutchison '79
 Molly Roettgers Ihlenndorf '06
 Ms. Barb Inman
 Debi Soellner Inman '79
 Rachel DeLord Irwin '11
 Deni Swartzbaugh Isaacson '69
 Lori Burkhardt Jackson '81
 Callie Jacobs '21
 Mr. & Mrs. Lawrence Jacobs III

ANNUAL FUND

Honor Roll of Investors

Jules Jefferson '20
 Sydney Jefferson '18
 Kennedy Johnson '21
 Mr. & Mrs. Dennis Jones
 Jill Jackson Jones '70
 Claire Miller Jordan '05
 Mr. & Mrs. Charles Juengling
 Mary Fago Justice '80
 Molly Kaes '21
 Kelly Kaiser '02
 Mr. Nelson Kaiser
 Kim Keels '79
 Cherie Weber Keller '93
 Mr. & Mrs. Tom Keller
 Janelle Koop Keller '99
 Ms. Molly Kelly
 Sue Strittmatter Kelly '73
 Alli Kelsey '10
 Chris Kelly Kelsey '80
 Lea Lingardo Kemme '05
 Cindy Nieman Kemper '73
 Tara Huwel Kennedy '90
 Mary Ann Strittmatter Kenyon '68
 Sr. Marilyn Kerber, SNDdeN
 Maureen Sweeney Kerkhoff '74
 Carmen Kerley '17
 Sandy Kersey Kerns '70
 Angela Keppler Keryeski '05
 Charlene Schneider Kiefer '59
 Juanita Kindel '83
 Caroline Middendorf Kinsella '15
 Karen Scherl Klaus '96
 Judy Decker Klefas '67
 Lisa Ille Klein '92
 Tina Woll Klonne '79
 Mr. & Mrs. Steve Klonne
 Mrs. Fran Klosterman
 Julie Hammer Knight '88
 Katie Poulin Knight '07
 Mr. & Mrs. T. J. Knoll
 Mr. & Mrs. Kenneth Knollman
 Annemarie Koch '12
 Audrey Sieber Koch '53
 Jennifer Lynch Koerner '98
 Mr. & Mrs. Kevin Kohls
 Syd Kohls '21

Ms. Ursula Kress
 Marianne Zwick Krismer '70
 Cecilia Boehm Krusling '72
 Ms. Mary Krysztofak
 Krista Kuhlman '12
 Sara Kuhlman '10
 Mrs. Kathleen Kuhn
 Lauren Lacey '11
 Mr. & Mrs. Raymond Ladouceur
 Mr. & Mrs. Thomas Lake
 Linda Feldkamp Lamarre '65
 Pat Volle Lane '72
 Kelly Stark Lang '91

“Building a strong endowment will ensure that Mount Notre Dame’s Catholic education will be available to young women for generations to come.”

Marianne Hoobler Staubach '60

Natalie Starvaggi Lang '07
 Mr. & Mrs. Andrew Lange
 Barb Mueller Larbes '68
 Liz Strittmatter Large '69
 Pat Connor Leder '66
 Chris Walker Lederle '88
 Maddie Lees '15
 Mr. Mel Lehrner
 Sarah Hamilton Leinberger '70
 Caroline Leonard '18
 Mr. & Mrs. Raymond Leonard
 Sydney Leshnak '17
 Emma Stiver Lesko '11
 Mr. & Mrs. Irv Lieberman
 Elizabeth Haverkos Liederbach '08

Mrs. Marge Luken
 Jennifer Hoffman Lukes '97
 Mr. & Mrs. Tom Lukey
 Dee Finkbeiner Lynd '60
 Jourdel Mabunay '18
 Ms. Elizabeth MacDougal
 Diane Riesenberg Mack '72
 Kelley Holliday Maddux '05
 Ann Lehrter Madsen '81
 Mr. & Mrs. Alexander Madyda
 Lizzie Madyda '21
 Randi Mailhot '20
 Jill Stephens Majo '08
 Becca Volk Mandru '05
 Amy Cornwell Mangano '03
 Mr. & Mrs. James Mappes
 Jennifer Marks '11
 Julianne Marks '13
 Mr. Al Marous
 Leah Martin '21
 Louise Doherty Martin '79
 Sunny Warther Martin '71
 Maggie Folzenlogen Martino '05
 Jeri Maschinot '65
 Anna Mattei '18
 Mr. & Mrs. Robert Mayer
 Gabbi Mayne '21
 Kristen McBride '21
 Elisa McClellan '21
 Mary McClellan '05
 Kathy McConkey '70
 Ms. Larcine McDonald
 Natalie Hansman McDonald '08
 Ms. Elaine McGuire
 Kathy Greiwe McKinney '60
 Julie Dean McMahon '06
 Jan Wernery McNeil '76
 Jennifer McPeters '05
 Kris Carey Meade '72
 Emily Mechley '21
 Mrs. Mary Mecklenborg
 Carolyn Medosch '63
 Lois Welsch Mehring '62
 Lindsay Melia '05
 Judy Wagner Melish '68
 Anne Kelly Merrill '02
 Marianne Fischesser Metz '75
 Lesa Walter Meyer '84
 Mary Rakel Meyer '73
 Tess Meyer '15
 Kim Kroell Meyrose '01
 Ally Michalski '11
 Laura Buchert Middendorf '76
 Mr. & Mrs. Michael Milbourn
 Angela Higgins Miller '94
 Mrs. Ann Miller
 Mrs. Libbie Miller
 Paula Miller Miller '63
 Terri McMillen Miller '81
 Christine Terzuoli Minix '05
 Jessica Mitsch '20
 Alexis Lonneman Mize '06
 Mr. & Mrs. Michael Mock
 Caryl Moenster '64
 Lauren Meirose Moore '04
 Pam Gilbert Moore '69
 Mary Jo Link Morgan '66
 Ms. Gail Motz
 Pat Riedinger Mouch '61
 Barb Beaudoin Muehlenkamp '84
 Jeanne Huster Muia '82
 Mr. & Mrs. Michael Mullins
 Amber Burley Munnerlyn '00
 Allison Murphy '11

Ariel Chachoff Murphy '10
 Ellie Murphy '21
 Sr. Mary Bridget Murphy, SNDdeN
 Mr. & Mrs. Herman Naberhaus
 Mr. & Mrs. Steve Nagel
 Sarah Nagy '19
 Leah Pelzel Nash '08
 Stephanie Asbrock Neroni '05
 Emily Neubauer '05
 Maddie Neubecker '17
 Pam Neuner '71
 Cassidy Miller Newport '11
 Amy Neumann Nicholas '05
 Ms. Kimberly Niehaus
 Ally Nimitz '15
 Mary Ann Boehl Nolte '70
 Mr. & Mrs. Russ Nucaeste
 Mr. & Mrs. Gary Obert
 Megan Obert '23
 Paula Hauser O'Brien '98
 Mr. & Mrs. David O'Bryan
 Mr. & Mrs. Michael O'Connor
 Caroline O'Donnell '16
 Lynne Rhoda O'Donnell '84
 Mr. & Mrs. Tom O'Donnell
 Ava Oelrich '15
 Joanna Mills Osher '04
 Nicole Rosati Otting '04
 Julie Partin Otto '92
 Mary Jeanne Matre Overcash '66
 Murf Schulkers Painter '68
 Mary Kay Ziegler Palmer '60
 Suzanne Mink Pappas '60
 Elizabeth Bayer Paxon '14
 Ms. Betty Ann Peddicord
 Jeanne Buehler Peddicord '88
 Libby Pelzel '12
 Olivia Pennington '19
 Mary Schwartz Perkinson '05
 Alexis Perry '19
 Connie Leinberger Pettitt '64
 Megan Hicks Phelan '04
 Lynne Piepmeyer '76
 Becca Pittinger '14
 Ms. Kate Plas
 Cheryl Ernst Popolin '65
 Elaine Brown Powers '67
 Jean Broermann Preston '70
 Amanda Puthoff '16
 Carolyn Smith Puthoff '83
 Katie Puthoff '05
 Katie O'Donnell Quehl '05
 Mary Ann O'Callaghan Rack '61
 Ms. Patty Ragio
 Kim Nieman Rahe '75
 Brittany Rakowitz '98
 Desi Harsch Ralston '98
 Ms. Kay Rands
 Sheri Schlotman Ratliff '84
 Mr. Ryan Sweeney & Ms. Molly Rauch
 Kimberly Recinella '10
 Dr. Jo Ann Recker '60, SNDdeN
 Jeanne Franklin Reckman '66
 Mr. & Mrs. Timothy Reed
 Nancy Harris Rees '70
 Mr. & Mrs. Clifford Reifel
 Hailey Reifel '21
 Debbie Feiertag Reilly '74
 Megan Reilly '13
 Melissa Rakel Rein '82
 Terri Tillar Reinhart '70
 Lindsay Jordan Reiser '00
 Abby Renneker '18
 Marcia Hoerst Reuscher '75



Hannah Kohne '13
 Monique Fischer Kolkmeier '78
 Mr. & Mrs. Lance Kollstedt
 Teri Neumann Korbee '68
 Ms. Jennifer Koutnik
 Mr. & Mrs. Patrick Kowalski
 Taylor Kowalski '20
 Ellie Kowitz '21
 Lynne Kraemer '88
 Amy Wietmarschen Krebs '02
 Shirley Roth Kreider '61

Carol Mintkenbaugh Lighfield '60
 Rose Ellis Lindeman '64
 Erica Linder-Callahan '05
 Pat Day Lindsey '62
 Maria Lingardo '15
 Margaret Hurlburt Lockwood '52
 Bridget Logan '19
 Debbie Vonderhaar Loucks '88
 Jenni Schumacher Love '85
 Mary Kay Merland Luchenbill '63
 Ms. Marlene Luffy

Honor Roll of Investors

Sara Reuscher '04
 Kathryn Reynolds '11
 Angie Ciaramitaro Ricketts '86
 Mary Jo Eschmeyer Rickling '63
 Michelle Burns Ridder '02
 Mr. & Mrs. Gary Rieder
 Chris Bucheit Rielag '68
 Amy Rieman '82
 Ms. Beth Riesenberger
 Martha Rolfes Rizzo '67
 Jennifer Morgan Roach '98
 Jean Schoeny Robbins '72
 Kenny Bishop Robbers '65
 Andrea Wolf Roebker '10
 Carol Mouch Roettele '60
 Becky McDonald Roettgers '80
 Lynn Koetter Rook '85
 Anna Rosenthal '16
 Kate Rosenthal '17
 Anna Rosian '21
 Mrs. Peggy Roundtree
 Gina Siemers Rouse '97
 Laine Rousseau '10
 Melissa McManus Ruchel '02
 Andrea Morrison Rueve '10
 Monica Ruscher '08
 Kelly Teuschl Russo '06
 Jayni Lehrter Ryherd '07
 Laura Sagrati '85
 Chrissy Rutherford Salley '01
 Julie Gruber Sanders '74
 Darlene Meyer Santel '68
 Shannon Towle Savage '05
 Michelle Savoti '92
 Mr. & Mrs. Scott Schappacher
 Jessica Tonges Schatzman '05
 Erin Connelly Schaub '05
 Nicole Biersack Scheetner '85
 Joan Kramer Schmidt '68
 Marlene Prickel Schmidt '65
 Anna Schneegg '18
 Mr. & Mrs. Mike Schuckman
 Dianne Craven Schuler '78
 Joan TenBieg Schulte '54
 Erin Wietmarschen Schultz '97
 Roy Schumacher
 Mr. & Mrs. Denis Schutte
 Heather Schwab '21
 Kaylene Botsford Schwab '87
 Mr. & Mrs. Steve Schwartz
 Emily Schwartz '21
 Sarah Schwartz '17
 Stephanie Smoller Schwartz '02
 Abby Schwarz '15
 Dr. & Mrs. Thomas Schwieterman, M.D.
 Wendy Knapmeyer Schworer '85
 Angela Sebald '18
 Vicki Keehan Selm '77
 Pat Matre Selmeier '71
 Peggy Zinser Shafer '65
 Meg Rauckhorst Sharp '78
 Mrs. Elaine Shawver
 Ginny Shawver '73
 Jess Lehrter Shelton '04
 Ms. Nancy Shoenberger
 Terri Doerger Shotwell '70
 Julie Sonnanstine Sibthorp '90
 Barb Lockwood Siciliano '71
 Mrs. Erika Sidler
 Peg Siegmund '60
 Margaret Bottenhorn Sifferlin '66
 Riley Simmons '20
 Zoe Sipe '14
 Kelly Dennis Sipocz '10

**Would you
 like to leave a
 lasting legacy
 at MND?**

**Find out more by
 visiting www.mndhs.plannedgiving.org**

Sami Becker Sittner '07
 Abby Skeens '14
 Mary Anne Kettler Smallwood '74
 Mr. & Mrs. Richard Smethurst
 Abigail Smith '24
 Donna Stites Smith '61
 Gabrielle Smith '09
 Mr. & Mrs. Jeff Smith
 Julie Burns Smith '62
 Sandra Mueller Smith '62
 MND Faculty & Staff
 Beth Perry Solomon '08
 Joan Sontag '81
 Brielle Owens Sorter '07
 Sue Elsbrock Sowder '67
 Mr. & Mrs. Fred Spatz
 Mr. & Mrs. Kevin Stachowski
 Cass Stainton '21
 Mr. & Mrs. Jeffrey Stainton
 Sandy Cooper Stallo '70
 Amanda McCabe Stanton '98
 Maggie Steele '11
 Grace Wermes Stegeman '11
 Natalie Steibel '18
 Judy Connor Stephens '76
 Carol Kamphaus Stevens '78
 Gwen Harpring Stich '05
 Mrs. Marion Stich
 Becky Stiens '07
 Lisa Metz Stiver '81
 Lisa DiFabio Stizlein '67
 Jo Ann Flavin Stone '81
 Katie Storer '11
 Jasmine Storms '12
 Jennifer Santel Stout '99
 Mr. & Mrs. Rodney Strayer
 Rylee Strayer '21
 Elena Strecker '11
 Mr. & Mrs. Greg Strotman
 Judy Stuerenberg '75
 Elyse Tollefson Suddendorf '03
 Maggie Boehm Sullivan '62
 Maria Sunderhaus '21
 Sarah Hoekzema Sylvester '02
 Carol Huber Tanner '61
 Mrs. Joyce Taphorn
 Melissa Tate '05
 Kelly Taylor '19
 Mary Kay Cunningham Taylor '69
 Lisa Soellner Tepe '82
 Emily Wenzel Tester '09
 Jen Eling Thamann '01
 Laura Brown Thamann '77
 Pam Haverland Thomas '71
 Susan Ossim Thomas '86
 Terri Niehaus Thumann '64
 Mr. & Mrs. Joel Tiberghien
 Mary Steiner Tobias '73
 Sister Carol Tobler '67, SIW

Mary Ellen Heenan Tompkins '53
 Becky Jasontek Tomsic '93
 Total Quality Logistics
 Rachel Toviniitti '06
 Casey Towle '11
 Barb Stiens Trapp '67
 Brigid Donnellon Tremblay '04
 Alice Trent '11
 Lauren Carroll Trigo de Serrano '08
 Michelle Browning Trovillo '92
 Kathleen Trubee '10
 Lauren Doughty Tubesing '05 1st Lt,
 USAF
 Lauren Tyus '07
 Mr. & Mrs. Ed Ujvagi
 Sister Frances Ellen Ulrich '56, SNDdeN
 Jane Hammergren Urlage '71
 Meghan Hickey Vagedes '09
 Jenny Santel Valerius '64
 Maria Veneziano '14
 Karen Rosselot Verbryke '70
 Margaret Vettel '67
 Kate Carstens Vieth '10
 Steven Gondol & Marisa Vilardo '66
 Kim Vonderbrink Volpenhein '00
 Carol Eling Vonderhaar '70
 Jill Vonderhaar '11
 Katherine Chapel Vonderhaar '96
 Riley Vonderhaar '21
 Pam Clement Voorhees '70
 Madeline Waddell '24
 Jackie Hagenhoff Waddle '62
 Cara Wagner '19
 Mr. & Mrs. Richard Wagner
 Connie Huening Waitas '70
 Carol Smith Walker '64
 Mr. Christopher Walter
 Brooke Walters '17
 Abby Waning '20
 Gretchen Waning '20
 Donna Stout Wanstrath '70
 Mrs. Jacquelyn Warner
 Mr. & Mrs. Damian Watkins
 Bella Watkins '24
 Mary Ann Mailhot Watrous '71
 Emily Webb '15
 Kate Kreiner Weber '99
 Dr. & Mrs. Robert Weber
 Nancy Gosink Weisbrod '70
 Janet Weisman '55
 Carol Hornberger Wellinghoff '70
 Addy Werling '20
 Judy Byrnes Wermes '80
 Kathie Jacquemin Wernke '72
 Margie Huddle Wesley '94

Barbara Wesseler '65
 Emily Wessendarp '06
 Deacon & Mrs. Mark Westendorf
 Liv Westendorf '21
 Alex Wever '17
 Mr. & Mrs. Oliver Wever
 Maggie Wiesner '99
 Kathie Donnelly Wietmarschen '71
 Jill McCaffrey Wiles '82
 Karen Klosterman Wilkes '78
 Amy Givens Williams '77
 Shelly Smith Williamson '05
 Mr. David Wilson
 Mr. John Wilson
 MacKenzie Wilson '08
 Nancy Cripe Wing '67
 Hayley Winslow '19
 Sue Nordloh Winstel '55
 Tracey Huiet Wirtz '04
 Marie Brewer Wise '97
 Ms. Sue Wiseman
 Mrs. Mary Ellen Wittetkind
 Pat Woellert '73
 Elizabeth Woeste '18
 Sandi Packer Wolbert '66
 Mr. & Mrs. George Wolterman
 Debbie Vogt Woltz '68
 Mr. & Mrs. Frank Worthoff
 Sabine Worthoff '17
 Claire Casey Woycke '67
 Marilyn Brosch Woycke '62
 Caroline Wright '99
 Elizabeth Wright '03
 Mr. & Mrs. Joseph Wright
 Kari Kremp Wright '00
 Mr. & Mrs. Joseph Wulf
 Sally Wulf '20
 Katie McPhillips Wurtz '06
 Lanie Wysong '19
 Collette Yaegel '05
 Lori Yaegel '85
 Susan Ackman Yarcusko '79
 Nancy Disque Yenke '71
 Ann Coad York '80
 Alli Young '06
 Debbie Stehlin Young '69
 Emily Young '21
 Jane Rosselot Young '67
 Monica Bird Young '96
 Barb Lichtenberg Youst '66
 Kyla Zesteremann '17
 Katherine Hack Zimmermann '12
 Annie Lipps Zoz '89
 Jamie Spurgin Zupka '03



ANNUAL FUND

Honor Roll of Investors

MND ALUMNAE INVESTORS

Class of '43

Mary Alice Pharo '43

Class of '45 (20%)

Frances Gessing Costello '45

Class of '47 (40%)

Jeanne Finen Clark '47
Helen Obermeyer Whalen '47

Class of '48 (7.69%)

Joann Obermeyer Rauh '48

Class of '49 (30%)

Barb Apking '49
Fay Elfers Fischesser '49
Lois Glaser Stolz '49

Class of '51 (33.33%)

Jeanne Lewe Alsmeyer '51
Jo Ann Schneider Brems '51
Janet Steman Edelmann '51

Class of '52 (21.43%)

Mary Ann Mogan Blome '52
Nancy TenBieg Ryan '52
Margaret Hurlburt Lockwood '52

Class of '53 (35.71%)

Mary Jo Albertz Custer '53
Audrey Sieber Koch '53
Judy Janson Mellott '53
Mary Ellen Heenan Tompkins '53
Mary Vennemeyer Williams '53

Class of '54 (33.33%)

Susan Sanders Adams '54
Helen Thorpe Miller '54
Joan TenBieg Schulte '54

Class of '55 (33.33%)

Irene Westerkamp Herbers '55
Gabrielle Rosselot Strand '55
Janet Weisman '55
Sue Nordloh Winstel '55

Class of '56 (35%)

Kathy Carnes Boylan '56
Mary Lou Smith Dollenmayer '56
Patricia Rouse Gabriel '56
Sylvia Lacher Osterday '56
Barb Fern Schmidt '56
Sister Frances Ellen Ulrich '56, SNDdeN
Lucy Sanders Veid '56

Class of '57 (25%)

Audrey Dillon Dwyer '57
Madeline Cavanaugh Hautz '57
Jan Feldhaus Savage '57

Class of '58 (16.67%)

Martha Schmitt McCarthy '58
Nancy Doerger Ollier '58
Sue Carnes Peters '58

Class of '59 (22.73%)

Nancy Skillman Barger '59
Joyce Moeggenberg Gilbertson '59
Marcia Maugle Greiner '59
Charlene Schneider Kiefer '59
Mary Lou Leugers Kissel '59

Class of '60 (27.38%)

Sue Maly Albert '60
Gerry Johnson Bauman '60
Martha Bien Beerman '60
Sue Buerger Bonnette '60
Mary Beth Kreidler Conover '60
Nancy Collins Diesel '60
Judy Moeggenberg Frost '60
Judy Wallet Gates '60
Connie Klopmeier Gerwe '60
Carol Voegele Greenwood '60
Barb Rotsching Horner '60
Janet Kellogg Huninghake '60
Judy Brigger Kuethe '60
Carol Mintkenbaugh Lightfield '60
Dee Finkbeiner Lynd '60
Kathy Greiwe McKinney '60
Mary Kay Ziegler Palmer '60
Suzanne Mink Pappas '60
Dr. Jo Ann Recker '60, SNDdeN
Carol Mauch Roettele '60
Peg Siegmund '60
Nancy Middendorf Smith '60
Marianne Hoobler Staubach '60

Class of '61 (17.24%)

Jane Gilligan Albers '61
Diane Brisben Barnes '61
Kathy Tholen Bath '61
Jeanne Craven Berns '61
Dottie Meyer Dailey '61
Dianna Corsmeier Driscoll '61
Clare Stauss Fister '61
Eileen Gruener Flege '61
Joyce Eling Hoerst '61
Linda Ferkenhoff Knapmeyer '61
Judi Huber Knecht '61
Shirley Roth Kreider '61
Mary Ann Parnell Maines '61
Pat Riedinger Mouch '61
Gretchen Osner '61
Mary Ann O'Callaghan Rack '61
Cookie Seigel Shanklin '61
Donna Stites Smith '61
Carol Huber Tanner '61
Nancy Pesa Wolke '61

Class of '62 (24%)

Dianne Glorius Boland '62
Mary Brodbeck '62
Diana Woebkenberg Campbell '62
Sue Geyman Cortesi '62
Diane DeSalvo Duritsch '62
Mary Wersel Engel '62
Joanne Pfister Fuchs '62
Charmaine Asbrock Hughes '62
Julie Baron Hughes '62
Joan Leinberger Koebel '62
Judy Wirtz Kuhl '62
Eileen Duermit Lakin '62
Barbara Eveslage Lehrter '62
Janet Carrigan Lindle '62
Pat Day Lindsey '62
Lois Welsch Mehring '62
Charlotte Buchert Melish '62
Julie Burns Smith '62
Sandra Mueller Smith '62
Sis Eysoldt Stofko '62
Maggie Boehm Sullivan '62
Mary Helen Laumann Turcott '62
Jackie Hagenhoff Waddle '62
Marilyn Brosch Woycke '62

Class of '63 (18.48%)

Mary Palopoli Albright '63
Mary Lou Busemeyer Dome '63
Kathy Brausch Dunn '63
Carol Moeggenberg Faulhaber '63
Mary Anne Blocker Frey '63
Marlene Lacher Grabel '63
Jane Cravaack Hanna '63
Roseann Lichtenberg Hemauey '63
Carolyn Christensen Horst '63
Nancy Vonderheide Johns '63
Mary Ann Fath Kalla '63
Mary Kay Merland Luchenbill '63
Carolyn Medosch '63
Paula Miller Miller '63
Mary Jo Eschmeyer Rickling '63
Jeanne O'Connell Sharpe '63
Wilma Rohlfis Vonderhaar '63

Class of '64 (20.18%)

Sue Malloy Albrinck '64
Mary Ann Adleta Amyx '64
Janet Bessler '64
Charlene Ackley Brisben '64

Are you seeking meaningful ways to give back while also benefiting your loved ones?

Check out www.mndplannedgiving.org

Kathleen Daly '64
Vicki Bollmer Decker '64
Susan Lesley Dixon '64
Cece Bucheit Donovan '64
Jane Moeggenberg Fink '64
Sherry Brofft Guess '64
Cheryl Giesler Haag '64
Janice Seurkamp Hayes '64
Carolyn Hoog Holterman '64
Rose Ellis Lindeman '64
Caryl Moenster '64
Connie Leinberger Pettitt '64
Jackie Segrist Strain '64
Terri Niehaus Thumann '64
Jenny Santel Valerius '64
Eileen Corcoran Von Holle '64
Carol Smith Walker '64
Barbara Benken Wimprine '64

Class of '65 (23.29%)

Pat Topmiller Berryhill '65
Linda Sliter Bird '65
Carolyn Planitz Conboy '65
Linda Schmidt Costura '65
Paula Issenmann Down '65
Diane Sauer Eisele '65
Betty Vonderhaar Evans '65
Vickie Ornella Evans '65
Susan Schmidt Fahrmeier '65
Susan Schmidt Fischesser '65
Eileen Parr Gibbs '65

Julie Miller Haverland '65
Pam Keller Heenan '65
Karen Kemper Henson '65
Marianne Fassnacht Hoekzema '65
Sherry Joerg Huddle '65
Jennifer Teismann Kappler '65
Susan Shively Kelly '65
Linda Feldkamp Lamarre '65
Mary Kay Doerger Levesay '65
Jeri Maschinot '65
Rose Ann Cooper Matonis '65
Linda Fladung Meiser '65
Sue Cirino Merland '65
Kathy Fredricks Oswald '65
Cheryl Ernst Popplin '65
LouAnn Beresford Robb '65
Kenny Bishop Robers '65
Marlene Prickel Schmidt '65
Peggy Zinser Shafer '65
Nancy Lutz VonBenken '65
Barbara Wesseler '65
Pam Wagner Wilson '65

Class of '66 (16.11%)

Phyllis Wilson Aileen-Donohew '66
Genny Luneack Behne '66
Judy Cremering Blomer '66
Linda Wiesner Clark '66
Pat Hoerst Crowder '66
MJ Eling '66
Alice Faulhaber Frank '66
Pat Franer Geeslin '66
Pam Gibbons '66
Penny Mueller Guerity '66
Jacki Hertzberg Heard '66
Barbara Fasce Kelly '66
Pat Connor Leder '66
Lillian Leahy McCabe '66
Pat Meisner '66
Mary Jo Link Morgan '66
Mary Jeanne Matre Overcash '66
Jeanne Franklin Reckman '66
Linda Morgan Rubens '66
Margaret Bottenhorn Sifferlin '66
Pat Lienemann Sphar '66
Sheila Gillespie Thompson '66
Sandi Packer Wolbert '66
Barb Lichtenberg Youst '66

Class of '67 (18.31%)

Connie King Baker '67
Joanne Bessler '67
Eileen Albrinck Compton '67
Elaine Crable '67, PhD
Penny Asbrock Cunningham '67
Joyce Hoerst Eling '67
Diana Condeni Haskell '67
Dottie Hessler Hathorn '67
Kathy Haas Huston '67
Judy Decker Klefas '67
Donna Krabbe '67
Mary Thomas Miller '67
Annette Wuennemann Obert '67
Elaine Brown Powers '67
Susan Bradfield Reyher '67
Martha Rolfes Rizzo '67
Sue Elsbrock Sowder '67
Debbie Reder Stebelton '67
Lisa DiFabio Stizlein '67
Sister Carol Tobler '67, SIW
Barb Stiens Trapp '67
Margaret Vettel '67
Gloria Estep Wamsley '67
Nancy Cripe Wing '67

Honor Roll of Investors

Claire Casey Woycke '67
Jane Rosselot Young '67

Class of '68 (17.83%)

Jeanette Teismann Arlinghaus '68
Pat Merkle Artist '68
Mary Wilz Bell '68
Beth Schuster Brozzart '68
Barb Hesse Coyle '68
Mary Ann Herman Eckert '68
Karen Kerkhoff Gromada '68
Julie Mattei Hellebusch '68
Anne Harsch Hinman '68
Mary Ann Strittmatter Kenyon '68
Teri Neumann Korbbe '68
Barb Mueller Larbes '68
Barb Brenner Laxton '68
Pam Harmeyer McCormack '68
Judy Wagner Melish '68
Murf Schulkers Painter '68
Chris Bucheit Rielag '68
Theresa Magro Ruebusch '68
Darlene Meyer Santel '68
Joan Kramer Schmidt '68
Barb Mouch Strotzman '68
Kathryn Wesseler '68
Debbie Vogt Woltz '68

Class of '69 (14.29%)

Barb Bailey '69
Donna Corsmeier Bain '69
Ruth Bedinghaus '69, SNDdeN
Betsy Brothers '69
Rose Boehm Bruns '69
Mary Back Chaney '69
Marlene Burckard Cook '69
Jean Schneider Crockett '69
Kathy Schulkers Harmeyer '69
Rosemary Pelstring Harris '69
Nancy Wohleber Hoye '69
Deni Swartzbaugh Isaacson '69
Beth Nettleton King '69
Liz Strittmatter Large '69
Nancy Glassmeyer Meyrose '69
Pam Gilbert Moore '69
Barbara Schmitz Owen '69
Roxie Brotherton Reinert '69
Mary Kay Cunningham Taylor '69
Margie Bushelman Warnecke '69
Linda Pate Wolf '69
Debbie Stehlin Young '69

Class of '70 (20.67%)

Sue Allen Ackley '70
Donna VonHolle Arnold '70
Diane Bechtold '70
Rosanne Mersch Brooks '70
Patti Gray Buisson '70
Paula Kennedy Call '70
Kathi Klingenberg Fitzpatric '70
Debbie Knueven Gannaway '70
Julie Sicker Goldman '70
Jill Jackson Jones '70
Dianne Riittenhouse Juenger '70
Sandy Kersey Kerns '70
Marianne Zwick Krismer '70
Sheila Voegele Lehrter '70
Sarah Hamilton Leinberger '70
Kathy McConkey '70
Cindy Reagan Miller '70
Linda Strite Murnane '70
Jeri Ihlendorf Murray '70
Mary Ann Boehl Nolte '70
Jean Broermann Preston '70

Nancy Harris Rees '70
Terri Tillar Reinhart '70
Terri Doerger Shotwell '70
Sandy Cooper Stallo '70
Carol Borgerding Tuthill '70
Karen Rosselot Verbryke '70
Sandy Villari '70
Carol Eling Vonderhaar '70
Pam Clement Voorhees '70
Connie Huening Waitas '70
Donna Stout Wanstrath '70
Nancy Gosink Weisbrod '70
Carol Hornberger Wellinghoff '70
Kathy Ries Wissel '70
Mary Lynn Woebkenberg '70
Debbie Rieder Yee '70

Class of '71 (18.13%)

Ann Becker '71
Ruth Baillargeon Beiting '71
Denny DuPriest Brune '71
Phyllis Sherrer Butterworth '71
Pat Brotherton Campion '71
Linda Cornell '71
Eileen Thomas Creeden '71
Patty Miller Dean '71
Anne Ernst '71
Linda Heile Fye '71
Mary Bashe Govan '71
Linda Muennich Homan '71
Patrice Woll Jones '71
Pat Blocker Kremers '71
Mary Kay Goldschmidt Kristofferson '71
Vada Patterson Love '71
Sunny Warther Martin '71
Pam Neuner '71
Shirley Schwieter Plahovinsak '71
Cathy Bushelman Roelker '71
Connie Samuelson '71
Cheryl Bellman Schrage '71
Pat Matre Selmeier '71
Barb Lockwood Siciliano '71
Cheri Cunningham Stacey '71
Connie Judd Taylor '71
Pam Haverland Thomas '71
Jane Hammergren Urlage '71
Mary Ann Mailhot Watrous '71
Kathie Donnelly Wietmarschen '71
Nancy Disque Yenke '71
Dorothy Benken Zahner '71
Cheryl Frey Zaidan '71

Class of '72 (12.18%)

Geri Cook Alder '72
Bev Reder Brownfield '72
Sue Grau Dempsey '72
Mary Jane Klingenberg Ebert '72
Sue Lohmueller Howard '72
Cecilia Boehm Krusling '72
Pat Volle Lane '72
Diane Riesenberg Mack '72
Kris Carey Meade '72
Barbara Pflanz '72
Jean Schoeny Robbins '72
Karen Arlinghaus Rummier '72
Cherie Guilfoyle Shannon '72
Joan Amorini Sheehan '72
Pam Broerman Shelton '72
Barb Kathman Strauss '72
Donna Mustard Walsh '72
Kathie Jacquemin Wernke '72
Barb Zwick Wolf '72

Class of '73 (10.14%)

Vicki Meno Ficke '73
Bonnie Gronefeld Geiger '73
Patty Rolver Haumesser '73
Cindy Judd '73
Sue Strittmatter Kelly '73
Cindy Nieman Kemper '73
Mary Rakel Meyer '73
Ginny Shawver '73
Terri Montag Smith '73
Mary Steiner Tobias '73
Donna Foltzer Traut '73
Julie Matre Weaver '73
Kathy Hughes Wilking '73
Pat Woellert '73

Class of '74 (11.67%)

Terry Brotherton '74
Vicki Mastruserio Eckstein '74
Mary Effler '74
Molly McQuaide Gusweiler '74
Debbie Roma Haines '74
Maureen Sweeney Kerkhoff '74
Linda Theis Kibblewhite '74
Michele Kroth Naish '74
Diana Weinheimer Oberschmidt '74
Debbie Feiertag Reilly '74
Marianne Schwertman Rohlf's '74
Julie Gruber Sanders '74
Mary Anne Kettler Smallwood '74
Joy Wilson Thaler '74

Class of '75 (10.42%)

Eileen Sauer Breyley '75
Ann Becksmith Donahue '75
Mary McGing Duckworth '75
Karen Haines Durchholz '75
Anne Scollard Fredrickson '75
Becky Byrnes Gumbleton '75
Teresa Harmon Leugers '75
Marianne Fischesser Metz '75
Mary Frank Minnis '75
Mary Potticary Obert '75
Kim Nieman Rahe '75
Marcia Hoerst Reuscher '75
Debby Steckler Routt '75
Diane Buer Ryder '75
Judy Stuerenberg '75

Class of '76 (14.78%)

Karen Schwartz Aielli '76
Valerie Woll Badinghaus '76
Dusty Veid Bechtel '76, DVM
Nancy Bushelman Berling '76
Pamela Porta Ewton '76
Concetta Overberg Geraci '76
Kathy Gibbons '76
Diana VonDenBenken Grinkemeyer '76
Jan Wernery McNeil '76
Laura Buchert Middendorf '76
Maryann Nardini '76
Lynne Piepmeyer '76
Teri Perin Rohan '76
Judy Connor Stephens '76
Mary Ashbrock Vonderbrink '76
Jackie Donnellon Welling '76
Julie Holthaus Woodward '76

Class of '77 (14.29%)

Mary Beth Donahue Armstrong '77
Faye Clements '77
Mary McQuaide Conners '77
Sue Mahsling Erdman '77
Dottie Harmon Eveleigh '77

Barbara Gibbons Greiwe '77
Jayne Fehring Grimm '77
Nancy Pierce Hollmann '77
Debbie Medosch Kirkpatrick '77
Julie Donnellon Lovell '77
Leslie Meyer New '77
Vicki Keehan Selm '77
Pam Kroeger Staun '77
Laura Brown Thamann '77
Marianne Roth Tisch '77
Kathy Fugate Vonderhaar '77
Lynn Ostholthoff Welty '77
Amy Givens Williams '77

Class of '78 (11.11%)

Linda Harmon Burgdorf '78
Chris Barnhorn Carozzoni '78
Joan Beeber Doyle '78
Mary Ann Twidale Flynn '78
Michelle Richter Ganim '78
Judy Back Gerwe '78
Ava Puthoff Herbig '78
Monique Fischer Kalkmeyer '78
Ellen Edelmann Marks '78
Julie Balbach Peters '78
Mary Sedmak Ruscher '78
Dianne Craven Schuler '78
Meg Rauckhorst Sharp '78
Carol Kamphaus Stevens '78
Karen Klosterman Wilkes '78
Anne Vonderbrink Wilkinson '78

Class of '79 (13.56%)

Terry McQuaide Barbara '79
Beth Amorini Brinkman Dugan '79
Vicki Harmeyer Burris '79
Kathy Marous Contadino '79
Lisa Ulmer Dierkers '79
Lisa Schoettker Fagin '79
Cindy Turney Feltman '79
Barbara Bockhorst Gerbus '79
Peg Auciello Halpin '79
Paula George Hutchison '79
Debi Soellner Inman '79
Cindy Heckel Johnson '79
Kim Keels '79
Tina Woll Klonne '79
Louise Doherty Martin '79
Mary Steckler Moore '79
Marianne Schurig Nishimori '79
Anne Schramm Purdue '79
Mary Carole Storer Schneider '79
Catherine Schulte '79
Jackie Schwarber '79
Ellen Mettey Spaeth '79
Holly Janson Tanner '79
Susan Ackman Yarcusko '79

Class of '80 (13.61%)

Mary Ellen Stecz Adams '80
Julie Naberhaus Bergmann '80
Sue Reilly Buescher '80
Amy Sutliff Curtis '80
Kathy Ryan Czerwonka '80
Amy Durchholz Farr '80
Cathy Hill Glassmeyer '80
Lisa Thomas Hartung '80
Debbie Fritz Hayes '80
Debbie Bosse Hufft '80
Laura Griga Julian '80
Mary Fago Justice '80
Chris Kelly Kelsey '80
Maureen Marous Mears '80
Carol Williams Roberts '80

ANNUAL FUND

Honor Roll of Investors

Becky McDonald Roettgers '80
Andrea Cinquina Rosenthal '80
Lisa Harmon Rousseau '80
Judy Byrnes Werms '80
Ann Coad York '80

Class of '81 (12.21%)

Jeanne Emerson Allen '81
Joan Young Arnold '81
Sharon Siefert Bukaty '81
Cynthia Gray '81
Jane Bruns Haslem '81
Vicky Eiser Heile '81
Lori Burkhardt Jackson '81
Teri Cassidy Lacey '81
Ann Lehrter Madsen '81
Kathy Kissel McQueen '81
Terri McMillen Miller '81
Gail Glassmeyer Pryse '81
Joan Sontag '81
Lisa Metz Stiver '81
Jo Ann Flavin Stone '81
Annette Hilvert Sussli '81

Class of '82 (10.71%)

Beth Antenucci '82
Mary Kohne Brownfield '82
Michelle Grammel Buehler '82
Kate Wright Chisholm '82
Liz Costello Cutter '82
Cheryl Angst Duncan '82
Lynne Bath Harris '82
Ruby Steele Herbst '82
Terri Butz Kerley '82
Jeanne Huster Muia '82
Theresa Kuntz Niehaus '82
Melissa Rakel Rein '82
Amy Rieman '82
Lisa Soellner Tepe '82
Pam Thiemann '82
Jill McCaffrey Wiles '82

Class of '83 (7.38%)

Chris Lynd Deters '83
Margo Hungler Ehemann '83
Sharon Woeste Garry '83
Connie Gerdes '83
Jill Horner Greene '83
Amy Knapmeyer Hilberg '83
Juanita Kindel '83
Karen Logan '83
Carolyn Smith Puthoff '83
Mary Beth Voshefski Timmel '83
Janet Welling '83

Class of '84 (12.5%)

Karen Back Bankemper '84
Jill Devine '84
Mary Jo Noschang Hertlein '84
Nancy Kettler Hopkins '84
Terri Gertz Kelsey '84
Karen Albert McNally '84
Lesa Walter Meyer '84
Barb Beaudoin Muehlenkamp '84
Lynne Rhoda O'Donnell '84
Sheri Schlotman Ratliff '84
Sherry Mack Roebel '84
Peggy Schmitz Schmidt '84

Class of '85 (17.95%)

Mary Agricola '85
Tina Linesch Black '85
Amy McGrath Bruno '85
Liz Keane Coughlin '85

Beth Bause Finn '85
Jacki Fischer '85
Judy Poppe Fulcher '85
Krista Gadzala '85
Jennifer Jung Gallo '85
Judy Donnellon Hall '85
Julie Reynolds Hicks '85
Lori Sauer Konkoly '85
Julie Ebbeler Leonard '85
Jenni Schumacher Love '85
Tami Hoekzema Peters '85
Lynn Koetter Rook '85
Laura Sagrati '85
Nicole Biersack Scheetner '85
Wendy Knapmeyer Schworer '85
Dawn Stiens '85, DVM
Lori Yaegel '85

Class of '86 (6.2%)

Laura Ostholthoff Estes '86
Denise Baum Goldschmidt '86
Emily Luken '86
Angie Ciaramitaro Ricketts '86
Debbie Hennel Rouse '86
Rose Ross South '86
Susan Ossim Thomas '86
Michele Feliberty Trivedi '86

Class of '87 (5.96%)

Christy Hoekzema Banke '87
Nancy Knapmeyer Bowles '87
Gina Wernke Brownstead '87
Pam Albert Corbin '87
Gail Rath Dorsey '87
Ann Blomer Everly '87
Kaylene Botsford Schwab '87
Kristin Wiwi Spatz '87
Pam Schneider Steinmetz '87

Class of '88 (8.77%)

Rebecca Clubb Bidinger '88
Missie Mitsch Conner '88
Tricia Reed Humphreys '88
Julie Jasontek '88
Pam Gerstemeier Kalb '88
Julie Hammer Knight '88
Lynne Kraemer '88
Chris Walker Lederle '88
Debbie Vonderhaar Loucks '88
Jeanne Buehler Peddicord '88

Class of '89 (6.3%)

Lisa Scheuerle Alexander '89
Christine Glatt Bode '89
Kelli Brown '89
Chris Kolkmeier Ernst '89
Wendy Durham Gottenbusch '89
Amy Heenan Gruppo '89
Tammy Weber-Ridener '89
Annie Lipps Zoz '89

Class of '90 (6.19%)

Betsy Hoekzema Bobst '90
Lisa Ostholthoff Griffin '90
Tara Huwel Kennedy '90
Krista Paas Nicholas '90
Julie Sonnanstine Sibthorp '90
Margo Wiltshire '90
Julie Hagedorn Zude '90, M.D.

Class of '91 (10.81%)

Stephanie Lichtenberg Brausch '91
Julie Lichtenberg Bronner '91

Ann Eling Falci '91
Yvonne Molina France '91
Tracy Ulland Goldie '91
Libby Carroll Groskopf '91
Erin Devine Hofmann '91
Tricia Huston Kilgore '91
Kelly Stark Lang '91
Ellen Eberenz Long '91
Cathy Bressert Magold '91
Kathy Beimesche Sheldon '91
Angie Stallo-Kramer '91

Class of '92 (10.38%)

Cindy Wagner Bricking '92
Angela Ernst Frith '92
Kim Kappler Hewitt '92
Lisa Ille Klein '92
Julie Partin Otto '92
Mallika Pereira '92
Michelle Savoti '92
Cristina Seda-Hoelle '92
Michelle Browning Trovillo '92
Julie Wade Walulik '92
Angie Creeden Wilking '92

Class of '93 (5.56%)

Molly Knapmeyer Ganz '93
Bob & Lisa Wagner Jennings '93
Cherie Weber Keller '93
Heather Doten Sauer '93
Shannon Storm Sieg '93
Becky Jasontek Tomsic '93
Tricia Mullen Wolfer '93

"I received a beautiful note from the young lady who will be the recipient of our scholarship donation. Believe me, I give it with joy!"

Gabrielle Rosselot Strand '55

Class of '94 (12.4%)

Angie George Arengo '94
Kim Back '94
Karen Obert Bayliff '94
Lori Jung Bean '94
Julie Eling Bower '94
Stacy Gigliotti Broenner '94
Teri Ulland Buheit '94
Nicole Gertz Burke '94
Katie Heenan '94
Sarah Thamann Irely '94
Michelle Williams Metzler '94
Angela Higgins Miller '94
Jennifer Strasser Smith '94
Lynn Schatzman Welch '94
Margie Huddle Wesley '94

Class of '95 (7.38%)

Amanda Cook Brueggemeier '95
Charissa Diekmeyer '95
Sarah Dodds Doepker '95
Megan Gerwel Forbis '95
Meridith Murphy Grasso '95

Bridget Hoerst Hoffman '95
Emily Gruber Hurley '95
Allison Jostworth Moser '95
Andrea Ventura Smedley '95

Class of '96 (7.75%)

Allison Kreiner Albertz '96
Jennifer Jacob Blomer '96
Karen Scherl Klaus '96
Tina Houston Leder '96
Jaime Kneer McDermott '96
Jana Roszkowski '96
Karen Bubak Udom '96
Steven Gondol & Marisa Vilardo '96
Katherine Chapel Vonderhaar '96
Monica Bird Young '96

Class of '97 (9.43%)

Annie Carl '97
Anissa George Cundall '97
Jocelyn Gregory '97
Kate Harrow '97
Amy Lang Hessel '97
Katie Hoekzema '97
Jennifer Hoffman Lukes '97
Angela Nardini Markle '97
Tara Nahrup Morris '97
Jane Karlak Robbins '97
Gina Siemers Rouse '97
Erin Wietmarschen Schultz '97
Jillian Valerius Shute '97
Martha Flynn Trydahl '97
Amy Gardner Tyler '97
Marie Brewer Wise '97

Class of '98 (10.13%)

Emily Camp Bonar '98
Mary Pierce Brenner '98
Lori Shelley Daniels '98
Meghan Ionna Donovan '98
Marie Hahn '98
Lisa Koebbe Jamison '98
Jennifer Lynch Koerner '98
Paula Hauser O'Brien '98
Brittany Rakowitz '98
Desi Harsch Ralston '98
Jennifer Morgan Roach '98
Kristin Heskamp Seiler '98
Amanda McCabe Stanton '98
Kelly Tholke Sullivan '98
Katie Rahe Warnecke '98
Katie Margolies Wietmarschen '98

Class of '99 (6.33%)

Kelly Heenan Bergmann '99
Jamie Boeckman '99
Erin Day '99
Kelly Kirby Ehrnschwender '99
Janelle Koop Keller '99
Emily Geier Maupin '99
Jennifer Santel Stout '99
Kate Kreiner Weber '99
Maggie Wiesner '99
Caroline Wright '99

Class of '00 (6.12%)

Stacy Boeckman '00
Nikki Robinson Bunch '00
Caley Burke '00
Kelley Gilreath '00
Sarah Arlinghaus Gulley '00
Becky Hoerst '00
Tori Shawver Marshall '00
Amber Burley Munnerlyn '00

Honor Roll of Investors

Lindsay Jordan Reisert '00
Stephanie Seibert Smith '00
Kim Vonderbrink Volpenhein '00
Kari Kremp Wright '00

Class of '01 (4.49%)

Katie Hostiuck Branson '01
Taylor Mitchell Giltner '01
Kristen Robinson Hoskinson '01
Teresa Lukey Long '01
Kim Kroell Meyrose '01
Chrissy Rutherford Salley '01
Jen Eling Thamann '01

Class of '02 (7.02%)

Amy Goddard Celis '02
Emily McCabe Feldman '02
Alexis Cox Fulton '02
Danielle Schuckman Geiman '02
Kelly Kaiser '02
Amy Wietmarschen Krebs '02

Nicole Rosati Otting '04
Megan Hicks Phelan '04
Sara Reuscher '04
Emily Ryan '04
Jess Lehrter Shelton '04
Brigid Donnellon Tremblay '04
Tracey Huiet Wirtz '04

Class of '05 (19.79%)

Jennifer Babak '05
Kim Wagner Barrett '05
Kelly Friedmann Brady '05
Beth Vonderbrink Brandner '05
Stacey Buescher '05
Jennifer Rohan Christensen '05
Melissa Bobinski Garris '05
Katie Walker Hefner '05
Bryn Henry Hocht '05
Megan Florea Halcomb '05
Claire Miller Jordan '05
Lea Lingardo Kemme '05

Emily MacLeod Edwards '06
Katie Weisbrod Freson '06
Britta Halpin Golueke '06
Beth Gregory '06
Kate Anderson Grimm '06
Molly Roettgers Ihlendorf '06
Julie Dean McMahon '06
Alexis Lonneman Mize '06
Lauren Costello Neises '06
Andrea Backscheider Neuwirth '06
Lindsay Owens '06
Kelly Pontius '06
Kelly Teuschl Russo '06
Rachel Toviniiti '06
Emily Wessendarp '06
Katie McPhillips Wurtz '06
Alli Young '06

Class of '07 (5.68%)

Julianne Smith Bell '07
Kristine Wersel Coe '07
Katie Poulin Knight '07
Natalie Starvaggi Lang '07
Erin Mackey '07
Jayni Lehrter Ryherd '07
Sami Becker Sittner '07
Brielle Owens Sorter '07
Becky Stiens '07
Lauren Tyus '07

Class of '08 (12.5%)

Maggie Altmier '08
Megan Condit Balbach '08
Jennifer Biele '08
Caitlin Blaut Comer '08
Rachel Creevy D'Errico '08
Hanna Eckhoff-Kremer '08
Laura Elliott '08
Lauren Anderson Gesenhues '08
Skylar Halpin '08
Devin Hayes '08
Bridget Grau Hoskins '08
Rachel Klosterman Joebgen '08
Elizabeth Haverkos Liederbach '08
Jill Stephens Majo '08
Natalie Hansman McDonald '08
Leah Pelzel Nash '08
Emily Rotella '08
Liane Rousseau '08
Monica Ruscher '08
Alexa Weston Shanahan '08
Beth Perry Solomon '08
Sharon Strizak '08
Lauren Carroll Trigo de Serrano '08
MacKenzie Wilson '08

Class of '09 (6.33%)

Kara Friedmann Bell '09
Kara Kindel Canfield '09
Kimberly Cutter '09
Laura Dittrich '09
Annie Wessendarp Ester '09
Audrey Eggenberger McCray '09
Gabrielle Smith '09
Emily Wenzel Tester '09
Caitlin Kloppenburg Timmons '09
Meghan Hickey Vagedes '09

Class of '10 (10.7%)

Carly Mears Beck '10
Ellen Crema '10
Madeline Duckworth '10
Ashley Towle Dutton '10
Megan Heidel '10

Molly Heister '10
Carolyn Eggenberger Jansen '10
Alli Kelsey '10
Sara Kuhlman '10
Molly Mullinger '10
Ariel Chachoff Murphy '10
Kimberly Recinella '10
Sarah Bohlen Reigle '10
Andrea Wolf Roebker '10
Laine Rousseau '10
Andrea Morrison Rueve '10
Kelly Dennis Sipocz '10
Kathleen Trubee '10
Kate Carstens Vieth '10
Katie Markgraf Wright '10

Class of '11 (18.33%)

Maria Gallagher Arnold '11
Lydia Backscheider '11
Rachel Frank Bluhm '11
Chloe Meyer Braun '11
Holly Laub Brown '11
Colleen Butler '11
Sarah Kohl Chasteen '11
Brianna Harrison Cohen '11
Candace Crowley '11
Lauren DiNardo '11
Amy McMahan Elam '11
Elizabeth Deutsch Fuhler '11
Beth Warning Haubner '11
Molly Hildebrandt '11
Abbey Hopkins '11
Rachel DeLord Irwin '11
Lauren Lacey '11
Emma Stiver Lesko '11
Jennifer Marks '11
Ally Michalski '11
Allison Murphy '11
Cassidy Miller Newport '11
Mindy Reed-Morrice '11
Kathryn Reynolds '11
Maggie Steele '11
Grace Werms Stegeman '11
Katie Storer '11
Elena Strecker '11
Casey Towle '11
Alice Trent '11
Jen Vonderbrink '11
Jill Vonderhaar '11

Class of '12 (7.98%)

Kelly Cutter Burger '12
Allison Carr '12
Rachael DiLeonardo '12
Kelly Gurren '12
Kathryn Hook '12
Robyn Kerley '12
Annemarie Koch '12
Krista Kuhlman '12
Maria Mattei '12
Libby Pelzel '12
Caitlin Shipp '12
Jasmine Storms '12
Katherine Hack Zimmermann '12

Class of '13 (6.86%)

Katie Bohlen '13
Callie Buck '13
Lindsay Cronin '13
Courtney Fasola '13
MacKenzie Gerdes '13
Kelsey Green '13
Elizabeth Guye '13
Maddie Haubner '13



Anne Kelly Merrill '02
Maria Merritt Morris '02
Michelle Burns Ridder '02
Melissa McManus Ruchel '02
Stephanie Smoller Schwartz '02
Sarah Hoekzema Sylvester '02

Class of '03 (6.79%)

Kim Hardesty Baker '03
Angela Santel Copsey '03
Maureen de St. Aubin Corgiat '03
Danielle Wampler Culbertson '03
Tara Collett Hogel '03
Holly Jones '03
Kate Hoyt Kamel '03
Amy Cornwell Mangano '03
Elyse Tollefson Suddendorf '03
Elizabeth Wright '03
Jamie Spurgin Zupka '03

Class of '04 (10.11%)

Helene Backscheider Adkins '04
Megan Witte Black '04
Erin Satzger Clemons '04
Lindsey Romes Compton '04
Katie Kubale Epling '04
Andrea Knollman Gier '04
Danielle Meyer Greaves '04
Jenna Vanden Eynden Heck '04
Michelle Lacey '04
Anita Lukey '04
Lauren Meirose Moore '04
Joanna Mills Osher '04

Angela Keppler Keryeski '05
Eileen Legaspi-Wilson '05
Erica Linder-Callahan '05
Kelley Holliday Maddux '05
Becca Volk Mandru '05
Maggie Folzenlogen Martino '05
Mary McClellan '05
Jennifer McPeters '05
Lindsay Melia '05
Christine Terzuoli Minix '05
Stephanie Asbrock Neroni '05
Emily Neubauer '05
Amy Neumann Nicholas '05
Mary Schwartz Perkinson '05
Katie Puthoff '05
Katie O'Donnell Quehl '05
Shannon Towle Savage '05
Jessica Tonges Schatzman '05
Erin Connelly Schaub '05
Gwen Harpring Stich '05
Christina Vangeloff Tarnowski '05
Melissa Tate '05
Lauren Doughty Tubesing '05 1st Lt,
USAF
Shelly Smith Williamson '05
Collette Yaegel '05

Class of '06 (12.15%)

Samantha LaBarbera Arrowood '06
Kaitlin Corbett Bowlin '06
Allison Muennich Bredestege '06
Kimberly Capehart '06
Amie Adkins Cook '06

ANNUAL FUND

Honor Roll of Investors

Hannah Kohne '13
Rose Lavelle '13
Julianne Marks '13
Megan Reilly '13

Class of '14 (12.41%)

Rachel Bronner '14
Catherine Buck '14
Kayla Cagle '14
Leah Callahan '14
Caitie Connell '14
Amy Dean '14
Sarah Drumm '14
Kristi Duncan '14
MacKenzie Feathers '14
Emma Garry '14
Megan Goslee '14
Kendall McKee '14
Elizabeth Bayer Paxson '14
Becca Pittinger '14
Zoe Sipe '14
Abby Skeens '14
Maria Veneziano '14

Class of '15 (8.99%)

Jessica Burris '15
Caroline Cusick '15
Kelsey Day '15
Samantha DeVore '15
Kacy Eckley '15
Caroline Gallo '15
Caroline Middendorf Kinsella '15
Maddie Lees '15
Maria Lingardo '15
Tess Meyer '15
Ally Nimitz '15
Ava Oelrich '15
Abby Schwarz '15
Jessica Towle '15
Emily Webb '15

Class of '16 (5.82%)

Maria Bonino '16
Lydia Brinkmann '16
Emily Buck '16
Elena Colby '16
Skylar Drefcinski '16
Katie Fasola '16
Laney Gallagher '16
Jessie Gries '16
Caroline O'Donnell '16
Amanda Puthoff '16
Anna Rosenthal '16

Class of '17 (10.74%)

Molly Bonino '17
Dorie Coggin '17
Caroline DeGroff '17
Erin Flanagan '17
Brooke Frazier '17
Morgan Hoffman '17
Carmen Kerley '17
Sydney Leshnak '17
Maddie Neubecker '17
Kate Rosenthal '17
Sarah Schwartz '17
Brooke Walters '17
Alex Wever '17
Sabine Worthoff '17
Kyla Zestermann '17

Class of '18 (13.75%)

Erin Cagle '18
Payton Drefcinski '18

Jenna Ehler '18
Bridget Felczan '18
Lilly Fisher '18
Veronica France '18
Mary Angela Guye '18
Bri Heverin '18
Katie Hindersman '18
Sydney Jefferson '18
Caroline Leonard '18
Jourdhel Mabunay '18
Anna Mattei '18
Abby Renneker '18
Anna Schnegg '18
Angela Sebald '18
Natalie Steibel '18
Elizabeth Woeste '18

Class of '19 (12.35%)

Julia Barnes '19
Lindsey Benhase '19
Amanda Clark '19
Rachel Creeden '19
Caroline Gott '19
Leah Gutzwiller '19
Julia Hoefling '19
Devon Hoffman '19
Amy Horton '19
Sarah Horton '19
Bridget Logan '19
Sarah Nagy '19
Olivia Pennington '19
Alexis Perry '19
Kelly Taylor '19
Cara Wagner '19
Hayley Winslow '19
Lanie Wysong '19

Class of '20 (12.99%)

Leah Black '20
Grace Brecht '20
Margaret Ehlen '20
Julia Feldmann '20
Caroline France '20
Isabella Geraci '20
Caroline Graue '20
Zoey Harig '20
Sarah Heard '20
Jules Jefferson '20
Taylor Kowalski '20
Randi Mailhot '20
Jessica Mitsch '20
Mackenzie Mulcare '20
Riley Simmons '20
Abby Waning '20
Gretchen Waning '20
Addy Werling '20
Ellie Wolterman '20
Sally Wulf '20

2020 2021 Now & Forever Campaign

Mr. & Mrs. Michael Allaire
Mr. & Mrs. Peter Anderson
Anonymous
Mary Beth Donahue Armstrong '77
Pat Merkle Artist '68
Mr. & Mrs. Jim Baldock
Battelle
Julie Jacobs Beckham '82
Mrs. Caitlin Bennett
Julie Naberhaus Bergmann '80
Mr. & Mrs. Kevin Blum
Mr. & Mrs. Rick Bohne
Ms. Amy Bonino

Mr. & Mrs. Robert Borgerding
Jo Ann Schneider Brems '51
Mrs. Jeannine Brinkmann
Mr. & Mrs. James Brinks
Ms. Lynne Brophy
Carol Bross-McMahon '82
Mr. & Mrs. Gerald Budde
Sue Reilly Buescher '80
Bushelman Supply Company
Mr. & Mrs. Dennis Caruso
Mr. Kenneth Chatlos
Faye Clements '77
Mr. & Mrs. Matthew Coffey
Mr. & Mrs. James Connell II
Frances Gessing Costello '45
Kim & Jim Creeden
Liz Costello Cutter '82
Donna Shively D'Aquila '77
Mr. & Mrs. David Dawson
Mr. & Mrs. Jerry Day
Mr & Mrs Jim & Karen Day
Mr. & Mrs. James DeJoy
Cookie Zurenko Devine '61
Mr. & Mrs. Gregg DeVita
Mr. & Mrs. Dan Diegmueeller
Joan Beeber Doyle '78
Mr. & Mrs. Craig Drefcinski
Mr. & Mrs. Ron Drumm
Bill & Rose Eckhoff
Mrs. Winnie Eckhoff
Anne Ernst '71
Evers Welding Co., Inc.
Ann Eling Falci '91
Mr. & Mrs. Andrew Falk
Mr. & Mrs. Bob Fasola
Ms. Jeanne Fisher
Mr. & Mrs. Randy Flannery
Mr. & Dr. Michael Fox
Yvonne Molina France '91
Mr. & Mrs. Rick Friedmann
Angela Ernst Friith '92
Sharon Woeste Garry '83
Mr. & Mrs. Tom Geier
General Electric Matching Gifts
Foundation
John & Marie Carnevale George '74
Concetta Overberg Geraci '76
Judy Back Gerwe '78
Mr. & Mrs. David Gillman
Mr. & Mrs. Mark Godbey
Mr. Jerome Goddard
Mr. David Haire
Peg Auciello Halpin '79
Mr. & Mrs. Bob Harper
Mr. & Mrs. Kevin Harris
Mr. & Mrs. Glenn Hartman
Patricia Buening Hartman '61
Lisa Thomas Hartung '80
Diana Condeni Haskell '67
Mr. & Mrs. Bob Hauser
Mr. & Mrs. Kevin Havens
Mr. & Mrs. Tom Haverkos
Debbie Fritz Hayes '80
Mr. & Mrs. Doug Healy
Mary Rohlfs Heilers '94
Mr. & Mrs. Dave Heilmann
Stephen & Julie Mattei Hellebusch '68
Karen Kemper Henson '65
Mr. & Mrs. Mark Holly
Mr. & Mrs. Vince Hopkins
Hormel Foods
Mr. Ben Hunt & Mrs. Reen Hunt
IBM Matching Grants Program
Mr. & Mrs. Brian James

Lisa Wagner Jennings '93
Johnson & Johnson
Mr. & Mrs. Rick Jones
Mr. & Mrs. Tom Joseph
Laura Griga Julian '80
Pam Gerstemeier Kalb '88
Terri Butz Kerley '82
Tricia Huston Kilgore '91
Beth Nettleton King '69
Monica Martin Koch '74
Marianne Zwick Krismer '70
Mr. & Mrs. Bill Kuhlman, Jr.
Dr. Joyce Kupfer-Mulderig & Dr. James Mulderig
Fallon Lane '00
Dr. & Mrs. Alan Laub
Mr. & Mrs. Michael Laufersweiler
Mr. Robert Leshnak & Ms. Nancy Nix
Margaret Hurlburt Lockwood '52
Mr. & Mrs. John Maier
Mr. & Mrs. Ralph Maresco
Mr. & Mrs. Tim Marklay
Mr. & Mrs. Joseph Marksteiner
Mr. & Mrs. David Mattei
MJ Mattei '71
Lillian Leahy McCabe '66
Jenny Jacobs McConnell '87
Mr. & Mrs. Ryan McKenna
Kathy Kissel McQueen '81
Mr. & Mrs. Dave Meyer
Mr. & Mrs. Dan Nagy
Mr. & Mrs. Bob Niehaus
Gretchen Osner '61
Kathy Fredricks Oswald '65
Annelise Page '12
Mr. & Mrs. Hal Pisciotta, Jr.
Becca Pittinger '14
Mr. & Mrs. John Planes
Mr. & Mrs. Michael Quinn
Joann Obermeyer Rauh '48
Mr. & Mrs. Tony Reed
Sarah Richter '20
RJ Beischel Building Co
Mr. Frank Robinson & Dr. Vicka Bell-Robinson
Mr. & Mrs. Mike Robinson
Dr. & Mrs. Jerome Rotella
Cassie Rowland '03
Karen Arlinghaus Rummeler '72
Mr. Tom Salerno
Melissa Eckes Sanders '09
Darlene Meyer Santel '68
Mr. & Mrs. Gerry Schatzman
Mr. & Mrs. Bill Schlater
Catherine Schulte '79
Mr. & Mrs. Steve Schwartz
Cristina Seda-Hoelle '92
Sisters of Notre Dame de Namur
Sandra Mueller Smith '62
Marcia Kollman Spraul '66
Cheri Cunningham Stacey '71
Mr. & Mrs. Kevin Stachowski
Dr. & Mrs. Tim Steffen
Mrs. Marion Stich
Cindy Rieselman Stiens '74
Ms. Carol Stillman
Sr. Rita M. Sturwold, SNDdeN
Takeda Pharmaceuticals
Michelle Ernst Theis '87
Pam Thiemann '82
Mrs. Carol Thomas
Mr. & Mrs. Kenneth Thomas
Sheila Gillespie Thompson '66
Ted & Peggy O'Donnell Torbeck '74

Honor Roll of Investors

Donna Foltzer Traut '73
Michele Feliberty Trivedi '86
Katie Houser Trupiano '06
Mr. & Mrs. Duy Vu
Dr. & Mrs. Ken Wagner
Mrs. Ginny Wagner
Mr. Steven Walsh
Margie Bushelman Warnecke '69
Lynn Ostholthoff Welty '77
Emily Wessendarp '06
Emily Fedders Wilford '95
Mr. & Mrs. Steve Wolf
Collette Yaegel '05
Alli Young '06
Mr. & Mrs. Michael Young
Mr. & Mrs. Michael Zierolf

NAMED SCHOLARSHIP INVESTORS

**Abigail & Gretchen Waning '20
Twins Endowed Scholarship**
Mr. David Haire

Adele Salerno Memorial Endowed Scholarship

Beth Antenucci '82
Terry Brotherton '74
Nancy Weisgerber DeVore '75
Amy Bissmeyer Galarowicz '84
Bonnie Gronefeld Geiger '73
Mr. and Mrs. Doug Hallett
Shelly Haskamp Helscher '72
Catherine Honkomp Hirsch '90
Betsy Hencheck Hoppe '83
Pam Gerstemeier Kalb '88
Mr. Tom Salerno

Amy Jacobs Reynolds '88 Memorial Endowed Scholarship

Anonymous
Mr. & Mrs. James Beeber
Marge Horn Butz '60
Ms. Barb Cassidy
Mr. and Mrs. Michael Coffey
Mr. & Mrs. Paul Collett
Mr. & Mrs. Bryan Crane
Cookie Zurenko Devine '61
Mr. & Mrs. Gary Drake
Mr. & Mrs. John Estell
Dr. & Mrs. Mark Goddard
Mr. & Mrs. Tom Grau
Mr. & Mrs. Kevin Harris
Kathy Wiesner Hasley '69
Mr. & Mrs. Chris Horn
Mr. & Mrs. Norm Horn
Ms. Mary Horner
Mrs. Pat Ihlandorf
Mrs. Jane Jacobs
Pam Gerstemeier Kalb '88
Mr. & Mrs. Michael Kopen
Libby Lamping Langefeld '63
Mr. Richard Lawrence
Mr. & Mrs. Bob Luck
Fran Buddelmeier Matz '63
Mr. & Mrs. Michael McKeown
Mr. and Mrs. Daniel Molina
Ms. Stephanie Agruso Neffle
Mr. & Mrs. Christopher Papa
Mr. & Mrs. Gary Paul
Mr. & Mrs. Steven Richter
Ms. Linda Smith

Mr. & Mrs. Jerry Spradlin
Mr. & Mrs. Virgil Stewart
Ms. Megan Thomas
Ms. Patricia Thomas
Lori Woycke Webb '88
Mr. and Mrs. Fritz White
Diane Sicker Zaferes '73
Mr. & Mrs. Larry Zix

Bob & Linda Fasola Family Endowed Scholarship

Mr. & Mrs. Bob Fasola

Bob Leshnak, Sr. Memorial Endowed Scholarship

Mrs. Lorraine Leshnak
Mr. Robert Leshnak and Ms. Nancy Nix
Sydney Leshnak '17

Bucheit Family Endowed Scholarship - Cece '64 and Chris '68

Cece Bucheit Donovan '64
Chris Mersch Mallette '68
Chris Bucheit Rielag '68

Budde Family Endowed Scholarship

Mr. and Mrs. Gerald Budde

Centennial Class of 1960 Academic Promise Endowed Scholarship

Dr. & Mrs. Marc Alexander
Gerry Johnson Bauman '60
Judy Rolf Bayer '60
Sue Buerger Bonnette '60
Jeni Woebkenberg Burke '95
Marge Horn Butz '60
Mary Beth Kreidler Conover '60
Mrs. Carol Drees
Sharon Woebkenberg Faust '65
Kristy Woebkenberg Georgiton '97
Connie Klopmeier Gerwe '60
Ms. Georgia Glunt
Carol Voegele Greenwood '60
Marge Knueven '60
Jennifer Lynch Koerner '98
Ms. Margaret Kreuzer
Ms. Kathleen Lamping-Arar
Carol Mintkenbaugh Lighfield '60
Kathy McConkey '70
Kathy Greiwe McKinney '60
JoAnn Vicar Mueller '61
Dr. Jo Ann Recker '60, SNDdeN
Carol Mouch Roettele '60
Mary Fahrenndorf Schmidt '62
Mary Lynn Woebkenberg '70

Classes of 1961 and 1962 Catholic Education Endowed Scholarship

Eileen Gruener Flege '61
Joanne Pfister Fuchs '62
Marilyn Heichelbech Gruber '61
Julie Baron Hughes '62
Mary Ann O'Callaghan Rack '61
Jackie Hagenhoff Waddle '62
Marilyn Brosch Woycke '62

Coach Grayson and Sarah FitzHugh Endowed Scholarship

Mr. & Mrs. Grayson FitzHugh
Gabrielle Smith '09

Crabbe Family Endowed Scholarship

Cindy Turney Feltman '79
Leslie Meyer New '77

Cristina Seda-Hoelle '92 Family STEM

Endowed Scholarship
Cristina Seda-Hoelle '92

Dean Family Endowed Scholarship

Mr. & Mrs. Jim Dean
Julie Dean McMahon '06

Eileen O'Donnell Lipps '65 Memorial Endowed Scholarship

Anonymous
Miss Denise Austing
Miss Tara Bain
Mr. & Mrs. George Beimesche
Mrs. Diane Blazer
Mr. & Mrs. Dan Bohlen
Eileen Clark Breeze '91
Mrs. Christy Brown
Mr. and Mrs. Stephen Burger
Chris Jones Carlisle '89
Julie Clark Carper '89
Ms. Patricia Cianciolo
Mr. & Mrs. Tom Conroy
Chelsi Creech '10
Ms. Mary Crowley
Mr & Mrs Jim & Karen Day
Mr. and Mrs. Paul Dehner
Mr. & Mrs. Ryan Detmer

Join MND's Heritage Society!

[www.mndhs.
plannedgiving.org](http://www.mndhs.plannedgiving.org)

Mr. & Mrs. Dan Diegmueller
Cece Bucheit Donovan '64
Kara Driscoll '11
Mrs. Cynthia A. Eckerle Bertke
Bill & Rose Eckhoff
MJ Eling '66
Terri Hayes Engel '65
Susan Schmidt Fischesser '65
Dr. & Mrs. Matt Fletcher, PhD
Mr. & Mrs. Todd Forman
Mr. and Mrs. William Frank
Mr. & Mrs. Timothy Franz
Katie Weisbrod Freson '06
Jennifer Jung Gallo '85
Ms. Deanne Gardonio
Mr. & Mrs. Tom Geier
Marie Carnevale George '74
Lisa Ostholthoff Griffin '90
Mr. & Mrs. Jim Groene
Betsy Grout '15
Mr. and Mrs. Doug Hallett
Peg Auciello Halpin '79
Mr. & Mrs. Andrew Hauser

Ms. Linda Heidi
Mary Rohlf's Heilers '94
Kim Kappler Hewitt '92
Catherine Honkomp Hirsch '90
Katie Hoekzema '97
Mr. & Mrs. Dave Holthaus
Mr. Joe Holtman
Betsy Hencheck Hoppe '83
Kristen Robinson Hoskinson '01
Mr. & Mrs. Nick Hosmer
Ms. Lisa Houser
Mr. Ben Hunt and Mrs. Reen Hunt
Mr. & Mrs. Michael Jasontek
Pam Gerstemeier Kalb '88
Dottie Knapp Kampman '63
Terri Butz Kerley '82
Mrs. Esther Kidder-Steman
Linda Ferkenhoff Knapmeyer '61
Dottie Schmidt Kron '66
Ron & Cheri Lehrter
Mary Kay Doerger Levesay '65
Mr. and Mrs. Thomas Lipps
Mr. & Mrs. John Maier
Tori Shawver Marshall '00
Jeri Maschinot '65
Dawn Lally McMillen '96
Maureen Schmitz Mechley '89
Mrs. Ann Miller
Betsy Rieman Murray '82
Jill O'Bryan '14
Mr. & Mrs. Dennis O'Donnell
Gretchen Osner '61
Kathy Fredricks Oswald '65
Mr. & Mrs. Joseph Posge
Mr. & Mrs. Jake Pucci
Amy Rieman '82
Mrs. Jeanne Rieskamp
Pat O'Donnell Rinschler '66
LouAnn Beresford Robb '65
Mr. & Mrs. Mike Robinson
Mr. & Mrs. David Rudy
Ms. Rita Rusche
Mr. & Mrs. Gerry Schatzman
Mr. & Mrs. Mark Schenkel
Mr. and Mrs. David Schildknecht
Mr. & Mrs. Bill Schlater
Peg O'Donnell Schmidt '66
Lisa Baker Schoenberger '84
Mr. & Mrs. Steve Schwartz
Kathy Beimesche Sheldon '91
MND Social Committee
Mrs. Krista Sonka
Tricia Barnes Speicher '83
Cheri Cunningham Stacey '71
Mr. & Mrs. Dave Stutzer
Grace Wermes Stegeman '11
Katelyn Sussli '12
Mr. & Mrs. Rick Tanner
Jen Eling Thamann '01
Nancy Lutz VonBenken '65
Mr. and Mrs. Thomas Wagner
Donna Giehl Wallman '65
Mr. & Mrs. Ray Wiemarschen
Mr. & Mrs. Joe Wilmers
Pam Wagner Wilson '65

Elaine Basham '81 Memorial Endowed Scholarship

Jeanne Emerson Allen '81
Dianne Glorius Boland '62
Michelle Grammel Buehler '82
Lori Blaut Fehr '81
Marty Schulkers Santos '81

ANNUAL FUND

Honor Roll of Investors

Ernst Family Endowed Scholarship

Anne Ernst '71
Angela Ernst Frith '92
Mr. & Mrs. Vince Hopkins
Michelle Ernst Theis '87

Halpin Family Endowed Scholarship - Peg '79, Britta '06, Skylar '08 & Delaney '11

Vicki Harmeyer Burris '79
Peg Auciello Halpin '79

Ivy Walsh '18 Endowed Scholarship

Vanguard Charitable
Mr. Steven Walsh

Janet M. & Donald L. Traut Memorial Endowed Scholarship

Mr. & Mrs. Donald Traut
Donna Foltzer Traut '73

Jeanne Mueller Rekers '44 Memorial Endowed Scholarship

Phyllis Wilson Aileen-Donohew '66
Connie King Baker '67
Bank of America Charitable Gift Fund
Terry Brotherton '74
Caren Bizzarri Daily '67
Cece Bucheit Donovan '64
Pam Gerstemeier Kalb '88
Carol Weartz Lord '64
Mueller Family Foundation
Sandra Mueller Smith '62

Jennifer Martin '89 Memorial Scholarship

Mr. David Axt and Ms. Susan Wilkinson
Ms. Patricia Baas
Mr. & Mrs. William Bascom
Mrs. Kate Bruns
Mr. Richard Curry
Carrie Geers Deffinger '89
Mrs. Janice Habel
Ms. Sandra Hawley
Ms. Nancy Jones
Pam Gerstemeier Kalb '88
Mr. & Mrs. John Kissel
Mr. & Mrs. Paul Lambert
Peggy Parchman Lohr '82
Mr. Nick Longo
Mrs. Katie Maurer
Nicole Renner McCullough '03
Mr. & Mrs. George Miller
Julie Lemmel Miller '89
Ms. Elaine Nolte
Mr. David Puckett
Mrs. Lynne Renner
Mr. & Mrs. Thomas Scherl
Ms. Kristen Wessinger

Great care has been taken in the preparation of these lists. We sincerely apologize for any errors and ask that they be called to our attention.

Thank you.

John and Kim How Family Endowed Scholarship

Mr. & Mrs. John How

Jovan Zachary '00 Memorial Endowed Scholarship

Dr. Laura Acsadi
Mr. & Mrs. Ed Adlard
Anonymous
Kim Hardesty Baker '03
Jenny Bauer '03
Ms. Tameka Beard
Alana Menefield Calhoun '02
Gia Calhoun '02
Ms. Tracee Carmichael
Martina Riep Ciers '02
Christie Mock Davis '03
Beth Deger Dektas '00
Mr. Ray Eckes
Ms. Tracy Edwards
Jenny Valerius Farfsing '02
Dr. Lauren Ford
Sarah Arlinghaus Gulley '00
Mrs. LaTonia Hanley
Mr. Ben Hunt and Mrs. Reen Hunt
Holly Jackson '03
Mr. & Mrs. Eric Jones
Michelle Lacey '04
Ms. Amy Land
Jessica Lee '06
Danielle LoVaglio-Caccavale '00
Miss Star Makonnen
Tori Shawver Marshall '00
Mrs. Theresa Maxwell
Ms. Jill McBride
Mrs. Kasie McCurdy
Mr. & Mrs. Dennis Meador
Beth Crable Means '03
Mrs. Allison Mowrey
Mrs. Quinn Myers
Mrs. Khady NDiaye
Amy Neumann Nicholas '05
Ms. Danette Palmore
Mrs. Trena Perrine
Courtney Heitkemper Powell '03
Ms. Venita Robinson
Cassie Rowland '03
Erin McCall Rudolph '01
Joan Freeman Ryan '00
Elyse Tollefson Suddendorf '03
Mr. Donald Vonhagel
Mrs. Deidra Walker
Emily Holthaus Wey '03
Katie Kaiser Whitson '00
Ms. Natasha Wilcox
Stephanie Woebkenberg '98
Kari Kremp Wright '00
Collette Yaegel '05
Mr. & Mrs. Kerry Yorn
Mrs. Shannon Yung
Jonelle Zachary '03
Ms. Julie Ziegenhorn

Julie Bien Niehoff '62 Memorial Endowed Scholarship

Barb Horn Grande '62

Julie Costello '97 Memorial Endowed Scholarship

Beth Feichtner Baxter '97
Michele Tuchfarber Carp '97
Cindy Turney Feltman '79
Michele Kroth Naish '74
Dr. & Mrs. Jerry Palermo
Mr. & Mrs. Thomas Scherl

Karen Meno '65 Memorial Endowed Scholarship

Nancy Lutz VonBenken '65

Kathleen Kelley '91 Memorial Endowed Scholarship

Linda Cornell '71
Bonnie Gronefeld Geiger '73

Kathleen Schnelle Hipskind Maier Community Service Scholarship

Taylor Mitchell Giltner '01
Betsy Hencheck Hoppe '63
Mr. & Mrs. Dennis Jones
Pam Gerstemeier Kalb '88
Mrs. Ann Miller
Mr. & Mrs. David Otten
Debbie Feiertag Reilly '74
MND Social Committee

Kevin and Ruthann Fox Carr '82 Family STEM Endowed Fund

Ruthann Fox Carr '82, DVM

Knapmeyer & Hilberg Family Endowed Scholarship

Amy Knapmeyer Hilberg '83
Linda Ferkenhoff Knapmeyer '61

Kupfer-Mulderig Family Endowed Scholarship

Dr. Joyce Kupfer-Mulderig and Dr. James Mulderig

Leahy Family Memorial Endowed Scholarship

Linda Morgan Rubens '66

Liz Marksteiner '04 Memorial Endowed Scholarship

Helene Backscheider Adkins '04
Sarah Deutsch Beasley '07
Jennifer Bernier '04
Mr. & Mrs. Carl Deutsch, Jr.
Andrea Knollman Gier '04
Mr. & Mrs. Tom Lukey
Mr. & Mrs. Joseph Marksteiner
Shannon Quinn '04
Chrissy Rutherford Salley '01

Maralyn Rohe Memorial Endowed Scholarship

Mr. & Mrs. Rick Friedmann

Marcia Petronio '68 Memorial Endowed Scholarship

Mr. and Mrs. Terrence Adkins
Pat Merkle Artist '68
Ruth Back '68
Joyce Samad Chiles '68
Caren Bizzarri Daily '67
Patty Miller Dean '71
Jane Petronio Gorton '73
Karen Kerkhoff Gromada '68

Julie Mattei Hellebusch '68
Anne Harsch Hinman '68
Beth Nettleton King '69
Chris Mersch Mallette '68
Dr. & Mrs. Michael Mattei
Blythe Nettleton Pietila '69
Chris Bucheit Rielag '68
Joan Kramer Schmidt '68
Phyllis Petronio Shireman '65
Smucker's
Nancy Lutz VonBenken '65

Margaret Glorius '33 Memorial Endowed Scholarship

Lynn Ostholthoff Welty '77

Marianne Hoobler Staubach '60 Endowed Scholarship

Paula Miller Miller '63
Marianne Hoobler Staubach '60

Marti Handorf Jung '62 Memorial Endowed Scholarship

Lori Jung Bean '94
Dianne Glorius Boland '62
Michelle Hoelscher Frey '84
Jennifer Jung Gallo '85
Mr. & Mrs. Bob Herman
Mrs. Gwendolyn Klemmer
Pat Day Lindsey '62
Joyce Miller Mason '63
Elizabeth Bayer Paxson '14
Lois Albrinck Wiehe Martin '64
Dr. & Mrs. Bob Wolterman

Mary Hanrahan Brogan '72 Memorial Scholarship

Patty Miller Dean '71
Shelly Haskamp Helscher '72

Mary Mehmert Memorial Endowed Scholarship

Anonymous
Connie King Baker '67
Carol Bross-McMahon '82
Terry Brotherton '74
Paula Kennedy Call '70
Caren Bizzarri Daily '67
Mrs. Cynthia A. Eckerle Bertke
Catherine Honkomp Hirsch '90
Pam Gerstemeier Kalb '88
Ms. Jennifer Koutnik
Stephanie Mack Loucka '93
MJ Mattei '71
Linda Strite Murnane '70
Mr. and Mrs. David Schildknecht

Meyer Family Endowed Scholarship

Mr. & Mrs. Dave Meyer

Michael & Kathy Kissel McQueen '81 Family Endowed Scholarship

Mary Lou Leugers Kissel '59
Judy Brigger Kuethe '60
Kathy Kissel McQueen '81

Michelle L. Hodge Memorial Endowed Scholarship

Terry Brotherton '74
Mr. & Mrs. Jim Clark
Mr. & Mrs. Brian DeGroff
Sarah Dodds Doepker '95

Honor Roll of Investors

Bill & Rose Eckhoff
Ms. Kristi Jo Jedlicki
Mr. & Mrs. Gerry Kauffmann
Ms. Bev Ryan Miller
Mr. Gerald Miller
Mr. & Mrs. Michael Qualters
Mr. & Mrs. Don Seadler
Mr. & Mrs. Dave Statzer
Mr. and Mrs. Robert Toomb
Dr. & Mrs. Bob Wolterman

Nancy Matre Horn '78 Memorial Endowed Scholarship

Dianne Craven Schuler '78
Kathy Morgan Vonderhaar '77
Julie Matre Weaver '73
Anne Vonderbrink Wilkinson '78

Patty Zinser Collins '63 Memorial Endowed Scholarship

Mary Palopoli Albright '63
Mr. James Collins
Amy Shafer Crissman '93
Mrs. Joanne Estenfelder Nesmith
Carol Moeggenberg Faulhaber '63
Mary Anne Blocker Frey '63
Mary Kay Merland Luchenbill '63
Joyce Miller Mason '63
Paula Miller Miller '63
Joanne Tomasella Plocica '61
Peggy Zinser Shafer '65
Vicky Piepmeier Ulland '68
Nancy Lutz VonBenken '65
Pam Wagner Wilson '65
Mrs. Betty Zinser

Peter W. Bushelman Memorial Endowed Scholarship

Barbara Pflanz '72

Rick & Tara Jones Family Endowed Scholarship

Mr. & Mrs. Rick Jones

Roger Grein Youth Philanthropy Endowed Scholarship

Lori Sauer Konkoly '85

Rotella Family Endowed Scholarship

Dr. and Mrs. Jerome Rotella

Ruth Feldhaus Lehrter '46 Memorial Endowed Scholarship

Beth Antenucci '82
Fay Elfers Fischesser '49
Ms. Jean Hartman
Mrs. Margaret Lang
Ron & Cheri Lehrter
Sheila Voegelé Lehrter '70
Marty Schulkers Santos '81
Judy Tensing '65
Ann Doyle Wurzelbacher '46

Sabrina Wolf '16 Endowed Scholarship

Mr. & Mrs. Steve Wolf

Shayna Wolf '23 Endowed Scholarship

Mr. & Mrs. Steve Wolf

Sister Julie Jarvis Memorial Endowed Scholarship

Jennifer Rohan Christensen '05
Sandy Rekers Egli '65
Catherine Honkomp Hirsch '90
Betsy Hencheck Hoppe '83
Pam Gerstemeier Kalb '88
Audrey Sieber Koch '53
Carol Weartz Lord '64
Merrill Lynch Bank of America
Paula Miller Miller '63
Ms. Sheila Rice
Judy Henderson Wakim '56

Sisters of Notre Dame de Namur Endowed Scholarship

Ann Weiler Beck '83
Sisters of Notre Dame de Namur

St. Therese de Lisieux Memorial Endowed Scholarship

Kathy Ryan Czerwonka '80

Stevie Wolf '20 Endowed Scholarship

Mr. & Mrs. Steve Wolf

Susan Geyman Cortesi '62 Endowed Scholarship

Sue Geyman Cortesi '62

Thomas & Celeste Haverkos Endowed Scholarship

Mr. & Mrs. Tom Haverkos

Thomas Geier Literary Arts Endowed Scholarship

Anonymous
Ms. Ann Arbogast
Laney Bender-Slack '86
Mrs. Beth A. Brown
Bushelman Supply Company
Kimberly Capehart '06
Amy Bissmeyer Galarowicz '84
Mr. & Mrs. Tom Geier
Shelly Haskamp Helscher '72
Julia Hider '10
Catherine Honkomp Hirsch '90
Betsy Hencheck Hoppe '83
Becky Strand Johnson '84
Pam Gerstemeier Kalb '88
Mary Kay Goldschmidt
Kristofferson '71
Emily Geier Maupin '99
Annelise Page '12
Mr. & Mrs. Howard Kradjel
Mr. & Mrs. Den Sies
Grace Wermes Stegeman '11
Casey Towle '11
Margie Bushelman Warnecke '69
Raegan Willertz '13

Tim & Debi Marklay Family Endowed Scholarship

Mr. and Mrs. Tim Marklay

Heritage Society

Anonymous
Mr. & Mrs. Tom Cassady
Mr. James Collins
Mr. Drew Derrick
Joan Koettters Gould '57
Kate Kreimer '62
Ron & Cheri Lehrter
Mary Kay Doerger Levesay '65
Mr. & Mrs. John Maier
Kathy Kissel McQueen '81
Mary Jo Link Morgan '66
Judy Gilligan Oswald '63
Marianne and Roger Staubach
Jo Ann Flavin Stone '81
Barb Mouch Strotzman '68
Pat TenBiegl '47

Financial Aid Endowment

Linda Theis Kibblewhite '74
Mary Jo Link Morgan '66

General Endowment

Anonymous
Mr. and Mrs. Kevin Blum
Frances Gessing Costello '45
Mr. & Mrs. Bill Schlater

Gifts in Kind

KDM P.O.P. Solutions Group
Peerless Printing Company
The Cincinnati Reds

Athletic Sponsorship

Beacon Orthopaedics & Sports
Medicine
Macy's, Inc. Matching Gifts
Mr. & Mrs. Kip Sharp

Basketball Program

Mr. & Mrs. Terrell Boyd

Community Service

Mr. & Mrs. Truitt Graue

Graces & Blessings Cross Ministry

Mr. & Mrs. George Donovan
Kathy McConkey '70
Patty Canning Moores '82
Mr. & Mrs. James Southward

Theatre Fund

Mrs. Carolyn Dierkers

Trophy Case

Quality Sports Apparel

Save these Dates!

WINE, WOMEN & SHOPPING

(Formerly Fashion Show)
October 7, 2021

BLUE DEBUT

(New Event!)
February 26, 2022

THE GALA

March 5, 2022





711 E Columbia Avenue
Cincinnati, OH 45215

Non-Profit
U.S. Postage Paid
Cincinnati, Ohio
Permit No. 9192

