



**MOUNT NOTRE DAME**

*Empowering Young Women*



Forward. *Together.*

**ANNUAL REPORT** | 2020 - 2021



# *Empowering young women to transform the world.*

## **OUR MISSION**

Guided by the Catholic faith and Saint Julie Billiart's belief in the "goodness of God," Mount Notre Dame educates and empowers young women to recognize and develop their unique capabilities to learn, live, lead and serve.

## **OUR VISION**

Mount Notre Dame – an exceptional Catholic, college-preparatory high school – will be recognized for graduating young women who are empowered to transform the world.





Dear Mount Notre Dame Families and Friends:

What a year 2020-21 was! We are grateful to have had the opportunity to celebrate God's goodness every day, even during this year of the pandemic. Our administration had to make quite a few adjustments and we learned a great deal along the way.

One thing we learned is that we have a strong technology base so a transition to remote learning was rather seamless. We discovered what additional tools we needed like classroom speakers, microphones, and monitors; and we provided these so that we could continue doing an amazing job at offering a quality educational program to our students. We also learned that the MND Sisterhood is very strong and found ways to keep the 'MND Experience' alive and well – enjoying many opportunities and successes throughout the year.

Another thing we learned is that our MND Community remained committed to the school as our requests for time, talent and treasure were continuously met with an amazing "yes". We so appreciate your strong support during this past year and thank you for helping us fulfill our mission to educate and empower young women to learn, live, lead and serve.

With the close of 2020-21 school year, we now set our sights on this new year and are so grateful for a strong enrollment of over 730 students. We also know that we can count on the support of so many of you to help us in our journey. If you ever want to discuss ways you might invest in Mount Notre Dame, please reach out to me at 513-821-3044 or at jgerwe@mdhs.org. I would be happy to have a conversation with you – either in person or over the phone.

In Deep Gratitude for your Support,

Judy Back Gerwe '78  
MND President

Dear Members of the Mount Notre Dame Community,

As we close the books on 2020-2021, I want to take this opportunity to express my deepest thanks to the Mount Notre Dame administration and faculty and staff for their creativeness, flexibility and untiring commitment to the education of our students during an unprecedented time in our school's history. I also wish to thank my colleagues serving on the Board of Trustees for sharing their talents to help MND thrive through a global pandemic.

To quote Saint Julie Billiart, the foundress of the Sisters of Notre Dame de Namur, "The more difficult the times are, the more we must expect and hope everything from the goodness of the good God."

Reflecting on the past year, I realize more than ever that our community is committed to the MND mission of 'educating and empowering young women to learn, live, lead and serve'. This is evidenced by our healthy enrollment, commitment to sustainability through gifts to the endowment, and the continual focus on providing an exceptional Catholic education to our students.

The future is bright for our school and the students we serve.

Very gratefully yours,

Bob Leshnak  
Chair, MND Board of Trustees

### 2020-2021 BOARD OF TRUSTEES

**CHAIR**

Bob Leshnak, Chair

Bill Hunt

Mina Jones Jefferson

Tom Joseph

**IMMEDIATE PAST CHAIR**

David Mattei

Mick Kowitz

Tim Marklay

Kim McBride

**MEMBERS AT LARGE**

Bill Beckham

Erin Satzger Clemons '04

Bob Crable

Jim Creeden, Jr.

Tom Geier

Bill Goslee

Kathy Kissel McQueen '81

Dr. Jo Ann Recker, '60, SNDdeN

Tony Reed

Lisa Harmon Rousseau '80

Jerry Royce

Cristina Seda-Hoelle '92

Pam Thiemann '82

Gerald J. Ulland



# Keeping the MND Experience Alive

By Karen Day, Principal

In my years as an MND faculty member and administrator, I have had the privilege to innovate and collaborate with incredible peers and students. Over time, we have developed an authentic MND experience. One of the challenges that confronted our community last summer was planning to implement a pandemic-friendly authentic MND Experience. The 2020–2021 school year confirmed that MND is filled with empowered women and men educators and tenacious students who heard our plea to 'Keep the MND Experience Alive' – and did so with tremendous success! Take a glimpse into the wonderfully successful world of MND pandemic life!

*“Teach them what they need to know for life.” – St. Julie Billiart*

In implementing a safe environment for MND students, MND planned a schedule that allowed for space in our week for alternative experiences. Known this past year as Non-Traditional Instruction (NTI) days, these were mostly held on Wednesdays, allowing for deep cleaning of our building and a mid-week change of routine. We often had some grade levels present at MND while the other grade levels were remote for this one day. On other days, all students were present in the building while participating in a variety of activities that helped the MND Experience remain true. And, on some occasions, MND students were all remote yet fully participating in authentic learning experiences.

On eight different days across the year, MND hosted Lifelong Learning Modules (LLMs) that were named in honor of St. Julie’s call to “Teach them what they need to know for life.” These Zoom-style remote sessions involved many guest speakers and relatable learning. (A list of others can be found on the next page.) We learned that LLMs inspired our students to see the future – in career paths, in applied skillsets, in women (mostly) and men who are transforming

our world. We learned that by preserving instructional time on the remaining four days per week, we created space in our academic lives to create authentic instruction from lived experiences. And, in that instruction, we were able to connect the curriculum content to what they need for life!

## Competitions, Productions and Dancing, Oh My!

In a school year of social distancing and controlled public environments, there certainly was a challenge to create pathways for students to interact with each other. Even the MND lunchroom was sliced into cubical eating corrals in order to minimize transfer during unmasked eating time. However, we were blessed to have permission from the State of Ohio to continue with sports, theatre and dance team with strict guidelines to follow. And success certainly was found.

- MND’s Dance Team had the longest season of all! With competition changes plaguing the early months of their season, flexibility was key. The team extended their season after a postponement of their national competition in Orlando, Florida - moving it from February to April. In order to make this trip possible, special lodging arrangements were made by our dance families. MND Dance persevered and completed this memorable season earning 6th place in Pom and 13th place in Jazz.
- MND’s athletic teams were ready to take on this pandemic. Our fall sports teams led the way in helping us learn how to best implement sports during this time. Patience by our students, athletic department and fans was key. This led to success in their season as well as in the winter and spring seasons. As I proudly proclaimed in my graduation reflection speech, “The Class of 2021 is the only class in MND history to have three State Championships in one year (volleyball, basketball and diving) while also having the least number of fans in the seats and the greatest number of absences from practice. #QuarantineLife

- MND Theatre faced the double whammy! Not only was the pandemic impacting their ability to operate as usual, the construction of MND's Performing Arts Center had them searching for appropriate rehearsal spaces. MND's hallways, foyer, cafeteria and classrooms became prime rehearsal spaces throughout the year. Two shows (*Into the Woods* and *Joseph and the Technicolor Dreamcoat*) found their center stage in MND's gym where there was plenty of socially distanced seating available. Performers and patrons were masked. In February, MNDT moved into the new Performing Arts Center with two more productions (*The Complete Works of William Shakespeare Abridged* and *Shrek The Musical*). As one MND staff member exclaimed, "while the West End in London, Broadway in NYC and Hollywood were closed down, MNDT was open for business!"

Of course, these major program successes were the compliment to the day-to-day club meetings, service experiences, retreats, outdoor pep rallies and even a spring junior-senior traditional prom. We learned that our students flourish in an MND environment because of the interactions they have with each other – regardless of the need to wear a mask!

### Learning and the Sisters of Notre Dame go virtual!

The SNDdeN curriculum is part of our religion content that ties into our school-wide commitments to spiritual development and academic development. These lessons and experiences help our community tap into the rich legacy that is part of our SND heritage. Besides learning the history of St. Julie Billiart and the Sisters of Notre Dame, our students tour the convent and visit the SND archives. They also conduct personal interviews with the sisters and participate in a small group book study and discussion at the convent. Planning for and conducting these learning experiences that deepen the understanding and connection for our students in the pandemic (which closed the convent to any visitors and limited the external contacts for all of the sisters) required some creativity! Thanks to leadership planning and commitment by MND's Campus Ministry and Religious Studies Teams and the willingness of our sisters to go virtual, we were able to continue with this learning.

- A tour of the convent was recorded and narrated so that our Freshman students could see the convent and learn some of the SNDdeN history from the sisters.
- Each year juniors read *A Journey of Courage, The Amazing Story of Sister Dorothy Stand* by Michele Murdock for their book discussion with the sisters. A small group of students participated in a Zoom book discussion with the sisters – some of whom were friends with Sr. Dorothy. The recorded book discussion was shown in class so all juniors could gain this firsthand knowledge.
- Our seniors participated in small group Zoom interview sessions with SNDs from all over the United States during their Catholic Lifestyles course. Being able to include sisters outside of Cincinnati was a happy benefit of this pandemic!

As we teach at MND, those who work and attend our school are heirs and trustees of the SNDdeN legacy. And this year, we were inspired to carry on that legacy virtually, partnership with the them.

It was a year like no other – and that in itself was the inspiration to make it one of the best yet! A faith-filled Christ-centered environment – even with masks, social distancing and extra cleaning protocols – was the foundation that allowed our MND students to have an *authentic* MND Experience where they grew in faith and found success in the classroom and in co-curricular activities. The 2020 – 2021 school year was kept alive, and our students uniquely developed within an *authentic* MND Experience. As St. Julie proclaimed, "How good is the good God!"

## Lifelong Learning Modules

### Academic Development

- Next Level Study Habits
- Creating a Professional Resume
- MND Women in Business Panel
- Honoring Our Veterans
- The Art of the Interview
- Information Overload: How to Evaluate, Navigate, and Utilize Online Sources
- Women in STEM Panel
- Women in Finance Panel

### Spiritual Development

- Elements of Catholic Social Teaching
- Trauma, COVID and Spiritual Perspectives
- The Secret of Living is Giving
- Breaking the Silence: Empowered to Talk About Race
- Gratitude Through Grief: Reviving Faith and Hope
- A Culture of Life
- A Place to Call Home
- Making Brave Choices

### Student Development

- Introduction to Mindfulness
- Grit: The Power of Passion and Perseverance
- Presenting Your Best Digital Self
- Up in Smoke – What is the Risk?
- The Life-Changing Power of Gratitude
- Finding Resilience
- Culinary Survival Skills: Tips for Creativity and Safety in the Kitchen
- How to Keep Two "Trusted Friends"
- (Cars and Computers) Dependable for Life

# A Step Forward in Our Journey

By Judy Back Gerwe '78, President

In 2017, the Achieve More Strategic Plan was launched after a group of over 100 Mount Notre Dame constituents gathered to talk about the future of the school. A committee was then formed to study the results of the discussion and formulate a plan to move forward. The committee identified five main themes that became the Aspiration Statements of the Strategic Plan:

- To be the exemplar for Catholic girls' education
- To establish ideal learning environments characterized by superior facilities
- To fully engage the Mount Notre Dame community
- To continue to develop strong connections to the Catholic Faith, the Sisters of Notre Dame de Namur and the traditions of St. Julie Billiart
- To be financially positioned to advance the mission of MND

Once the Aspiration Statements were determined, committees were formed around each one to determine what goals and objectives would illustrate the achievement of each statement. We then put together a timeline as to which objectives we would focus on each year over the next five years. We are now in the last year of the plan and I can honestly say that it has truly been a "living" document and we have much to be proud of. We will begin work on our next Five-Year Strategic Plan in the spring of 2022.

MND does seem to be the Catholic girls' school of choice right now and I think that is because we have been working hard to make us "the exemplar". Some major accomplishments from the first aspiration statement include greater participation in local, regional and national programs that recognize academic excellence and the expansion of participation in College Credit Plus courses.

We also want to offer our students "ideal learning environments characterized by superior facilities". Our faculty has been engaged in Professional Learning Communities for several years now and that has resulted in greater student success. We have increased participation in global learning opportunities by including Chile and Japan in our exchange programs. We have also welcomed a Wellness Counselor to our guidance staff who focuses on student mental health. A project that was greatly supported by many MND constituents like yourselves included the creation of a new Performing Arts Center. This new space occupies where the library was housed, so we also designed a new Learning Commons in the main hallway of the Academic wing. Both areas have enhanced the overall facilities.

Engagement with our Mount Notre Dame Community is very important to us and we continue to offer opportunities for our friends and families to be involved. I also share a monthly newsletter to keep everyone up to date on what is going on at our amazing school. Let us know if you are not receiving these via e-mail and we will make sure to add you to the list!

Our Catholic faith, the Sisters of Notre Dame de Namur and the traditions of St. Julie Billiart, the order's foundress, are very important to us. We offer monthly all-school celebrations of the Liturgy and/or Prayer Services, as well as the opportunity to participate in the sacraments and other devotions. We always look for ways to partner with the Sisters as we celebrate our connection with them and we continue to increase exposure to and appreciation of the Hallmarks of a Notre Dame Learning Community which line up well with Gospel values and Catholic Social Teaching.

Finally, we are working hard "to be financially positioned to advance the mission of MND." Most of our income is generated through tuition and benefactor support. Our enrollment is strong at over 700 students and we have an amazing group of benefactors who support the MND mission by investing in our school – in our Annual Fund to help the budget and in endowment dollars to help the school live on in perpetuity. A healthy endowment is key to remain sustainable and we are excited to announce that our endowment is now over ten million dollars. We have a goal to grow the endowment to \$30M over the next ten years. The interest on this money will help families afford a Catholic high school education at Mount Notre Dame as well as fund some of our programs, such as STEM.

We will continue to work at achieving the goals and objectives of the last year of the current Strategic Plan so that all of our Aspiration Statements become reality. And then we will start the process anew, so that MND continues to grow and keep our place as a premiere school for young women in the Cincinnati area.



# Vision Becomes Reality

By Jen Thamann, Public Relations Manager

When Mount Notre Dame established its Achieve More Strategic Plan in 2017, a key aspiration was "to establish ideal learning environments characterized by superior facilities". MND has worked continuously to make this vision a reality over the last four years and it culminated with the opening of the Performing Arts Center in March 2021.

MND partnered with MSA Design, HMBA and R.J. Beischel Building Company on this \$2 million renovation to convert the existing auditorium and library spaces (the original gymnasium for those who graduated prior to 2001) into a state-of-the-art Performing Arts Center. The renovation includes upgrades to the HVAC and fire alarm systems, the sound and lighting system with an integrated AV system and control booth, a wrap-around gallery, on-site scene shop and box office.

MND hosted a Grand Opening celebration as well as several special event tours this past spring to showcase the new space to the MND community. The features are, in a word, superb. Some features are front and center while others are more behind the scenes.

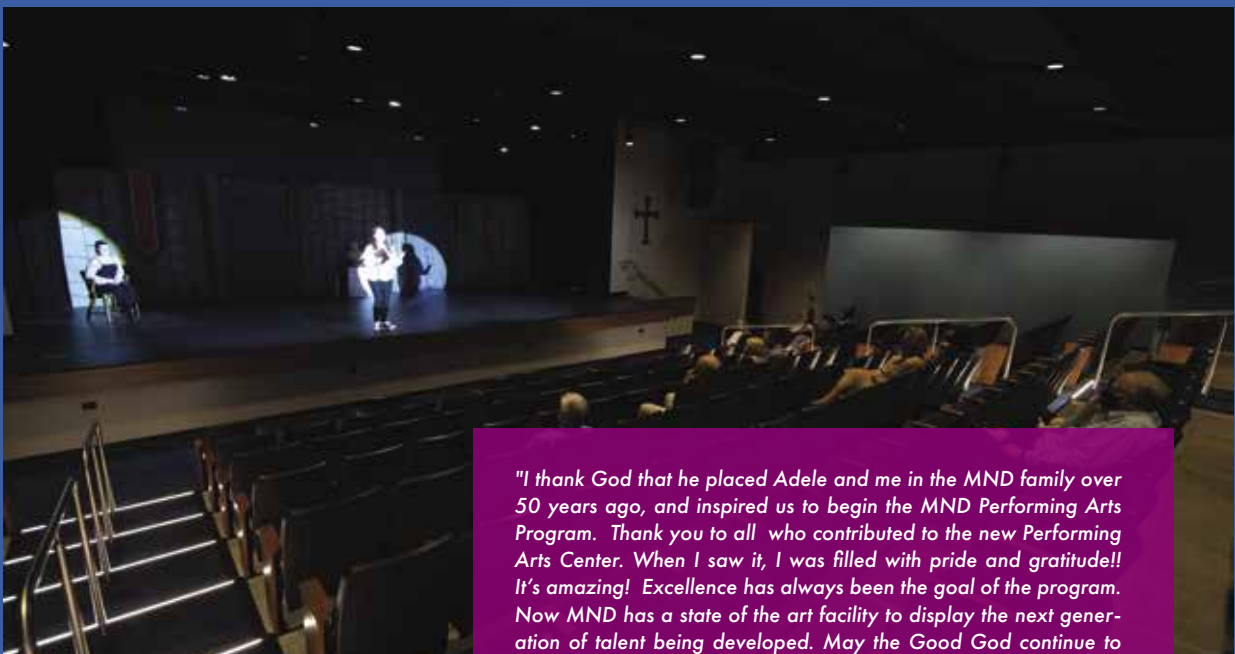
Seating received a significant upgrade in both quantity and comfort. The Performing Arts Center offers permanent, theatre-style seating for 390 guests and includes handicapped accessible seating as well. Individuals have an opportunity to sponsor a seat with their names engraved on the back. "We were honored to support MND's new Performing Arts Center with a donation for seating," expressed John and Marie Carnevale George '74. "It was our way of showing gratitude for our past graduating daughters (Angie George Arengo '94, Anissa George Cundall '97, Amy George Langford '00) and supporting the future of our granddaughters (Classes of '24, '26, '28, '30, '31). This is truly about MND offering the best in class for academics, athletics and now the arts."

The Performing Arts Center boasts a state-of-the-art control booth featuring the latest in lighting and sound technology. New features include LED lighting instruments that can be controlled with precision and offer an array of colors. Incredible new speakers compliment the space no matter where you are sitting. These features help MND Theatre enhance the quality for all productions in the new space and provides an unparalleled learning experience for our students.

The addition of an on-site scene shop located directly behind the stage has truly been a convenient upgrade for MND Theatre. This allows students to design, build and store scenes and other prop materials in the building. Prior to the completion of the Performing Arts Center, MND utilized an off-site location for the construction and storage of materials, which led to the burden of transferring these items to and from MND.

The reality of the Performing Arts Center is due to the generosity of many benefactors. As such, the entrance features a gratitude wall to acknowledge their investment in the MND community. The wall leads into a wrap-around gallery which offers the perfect space to showcase student artwork and other educational work throughout the school year. According to MND President Judy Back Gerwe '78 "The gallery is probably my favorite part of the Performing Arts Center. I envision multiple uses for this space."

We encourage you to check out the Performing Arts Center on your next visit. MND Theatre has a dynamic program lined up for the 2021-2022 school year, including Young Frankenstein (Nov. 2021), The Diary of Anne Frank (Feb. 2022) and Big Fish (April/May 2022). Your seat awaits!



*"I thank God that he placed Adele and me in the MND family over 50 years ago, and inspired us to begin the MND Performing Arts Program. Thank you to all who contributed to the new Performing Arts Center. When I saw it, I was filled with pride and gratitude!! It's amazing! Excellence has always been the goal of the program. Now MND has a state of the art facility to display the next generation of talent being developed. May the Good God continue to guide and inspire future generations! "*

Tom Salerno

# Our foundation for the future

## MND's Plan for Sustainability

By Rose A. Eckhoff, Director of Leadership Giving

It should be no surprise to anyone that affordability of Catholic Schools is a huge concern these days. At MND, we recognize the sacrifices that families are making and are working very hard to develop affordability initiatives to keep tuition costs at the lowest level possible, without sacrificing any portion of 'the MND Experience'. This includes academic excellence and rigor, outstanding extracurricular opportunities, and a solid faith-based curriculum. A very important component of the initiatives is MND's commitment to increase the school's endowment to 30 million dollars within the next ten years.

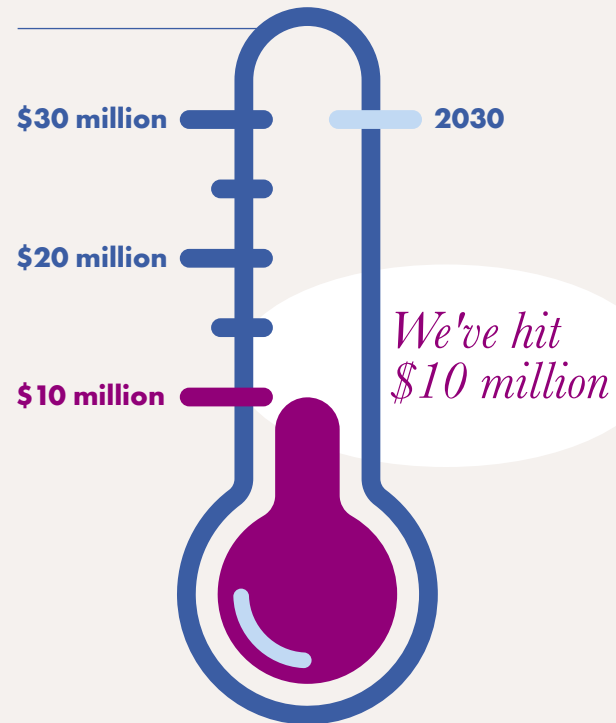
According to Development Committee Chair Bill Beckham "An endowment fund of 30 million dollars will provide the basis for MND's sustainability. We want to be not only surviving in ten years, but also thriving and confident that MND will be here for our next generation and beyond."

Why is endowment so important? Because over 40% of MND's student body currently requires financial assistance and we see this number growing. An endowment of this size would ensure that ample need-based scholarships are available for any student desiring an MND education, no matter their economic situation, and would also keep tuition increases to a minimum.

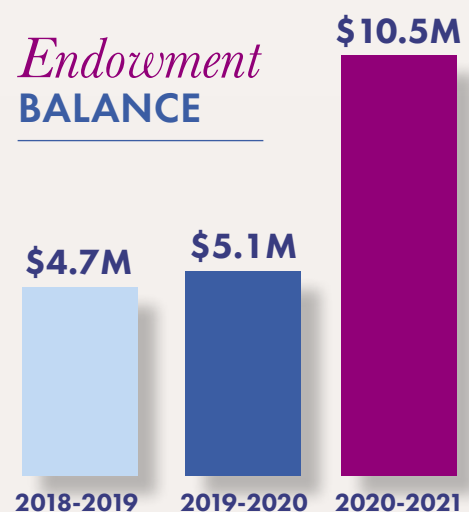
President Judy Back Gerwe '78 explains, "An endowment fund is like a saving account for MND, where the principle is never touched, and only the interest earned on the account is used to build the fund as well as support the ever growing need for financial assistance. Each year a rolling average of 4% of investments earned on the pooled endowment fund is distributed to support need-based scholarships, ultimately eliminating the need to use any other revenue."

Building an endowment takes commitment, discipline and a three-pronged approach that includes: effective investing; philanthropic giving; and a pipeline of school support. MND Board of Trustees President Bob Leshnak notes, "To date our endowment has grown to over \$10M thanks to the generosity of so many who have established a named endowed scholarship or remembered MND in their estate plan. We look forward to engaging more and more families in these wonderful investment opportunities which will help to secure our future."

### Endowment UPDATE



### Endowment BALANCE

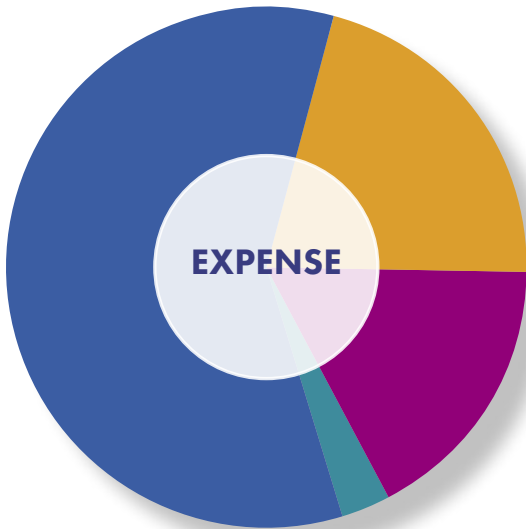
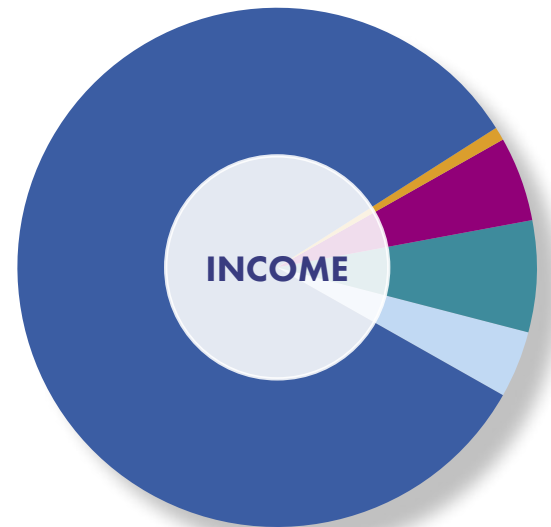




# Our Numbers 2021-2021

## Income

<b>Tuition and Fees</b>	<b>\$10,712,000</b>	<b>82%</b>
<b>Endowment Earnings Contribution</b>	<b>141,200</b>	<b>1%</b>
<b>Unrestricted Giving</b>	<b>717,000</b>	<b>5%</b>
<b>State Funds</b>	<b>961,500</b>	<b>7%</b>
<b>Student Activities</b>	<b>551,500</b>	<b>4%</b>
<b>Total</b>	<b>\$13,083,200</b>	<b>100%</b>

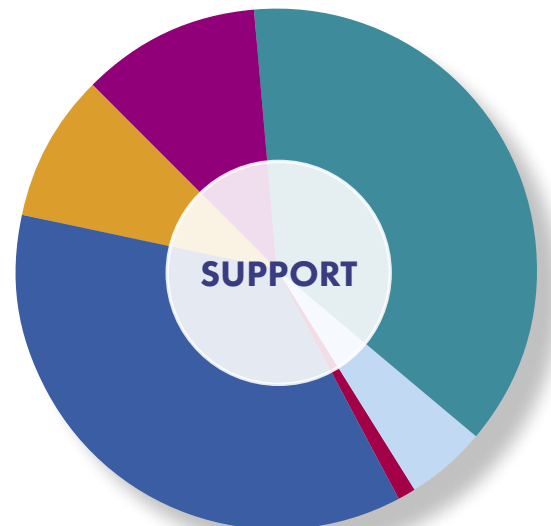


## Expense

<b>Instructional Services and Support</b>	<b>\$7,665,000</b>	<b>59%</b>
<b>Scholarship and Financial Aid Grants</b>	<b>2,784,000</b>	<b>21%</b>
<b>Facilities and Depreciation</b>	<b>2,192,500</b>	<b>17%</b>
<b>Miscellaneous</b>	<b>441,700</b>	<b>3%</b>
<b>Total</b>	<b>\$13,083,200</b>	<b>100%</b>

## MND Benefactor Support (restricted and unrestricted)

<b>Annual Giving Fund</b>	<b>\$569,000</b>	<b>36%</b>
<b>Grande Gala</b>	<b>\$148,000</b>	<b>9%</b>
<b>New Campaign Pledges</b>	<b>\$181,000</b>	<b>11%</b>
<b>Endowment/Scholarship Investments</b>	<b>\$582,300</b>	<b>37%</b>
<b>Unrestricted Campaign Investments</b>	<b>\$80,200</b>	<b>5%</b>
<b>Athletics</b>	<b>\$20,000</b>	<b>1%</b>
<b>Total Support</b>	<b>\$1,580,500</b>	<b>100%</b>









# Honoring our Supporters

Dear Members of the Mount Notre Dame Community:

Each year at this time I am granted the privilege of formally recognizing the incredible financial support of our many benefactors. Every person listed on the following pages has, in some meaningful way, gifted us with their generosity. Your generous financial support of Mount Notre Dame helps provide the necessary resources to advance our mission of educating and empowering young women to recognize and develop their unique capabilities to learn, live, lead and serve.

Some of the lists represent investors who help to ensure MND's stability through gifts to the 2020-21 Annual Fund and Gala while other lists recognize benefactors who support MND's endowment, providing the funding required for our sustainability. Both types of gifts are critical to ensure that all young women who desire an MND Catholic education are provided the financial support needed to realize their dream.

I am sure you join me in looking forward to a post-pandemic year and all the promises it brings.

I close with much gratitude in my heart for all those who continue to believe in, and support, the MND mission and experience.

Very gratefully yours,

Rose A. Eckhoff  
Director of Leadership Giving



# Honor Roll of Investors

## The President's Circle

### St. Julie Billiart Level \$10,000 or more

Anonymous  
Mr. & Mrs. Maurice Coffey  
Kathy Kissel McQueen '81  
Sisters of Notre Dame de Namur  
Mr. Ed Sokolowski  
Marianne & Roger Staubach

### Regent Level \$5,000 - \$9,999

Anonymous  
Mr. & Mrs. Tom Joseph  
Lillian Leahy McCabe '66  
Mr. & Mrs. Robert Niehaus  
Lisa Harmon Rousseau '80  
Mr. & Mrs. Ed Seibert  
Barb Mouch Strotzman '68  
Mary Beth Voshefski Timmel '83  
Marianne Roth Tisch '77

### Distinguished Level \$2,500 - \$4,999

Anonymous  
Mr. & Mrs. Norb Bruns, Jane Bruns Haslem '81,  
Joan Bruns Cahalan '83, Beth Bruns  
Cox '86, & Laura Bruns Kane '87  
Mr. & Mrs. Gerald Budde  
James & Christine Cartledge  
Kim & Jim Creeden  
Mr. & Mrs. Christopher Elma  
Flynn & Company  
Judy Moeggenberg Frost '60  
Mr. & Mrs. Steve Gerwe  
Mr. & Mrs. Doug Healy  
Karen Kemper Henson '65  
Brian & Peggy Hogan  
Sherry Joerg Huddle '65  
Tricia Huston Kilgore '91  
Eileen Duermit Lakin '62  
Mr. & Mrs. Rob Lemmons  
Mr. & Mrs. David Mattei  
Mr. & Mrs. Dave Meyer  
Mr. & Mrs. Nick Recker  
Mr. & Mrs. Tony Reed  
Mr. & Mrs. Jerry Royce  
Evelyn Mae Family Fund of The  
Greater Cincinnati Foundation  
Mr. & Mrs. Steve Tino  
Mr. Rick Tonges  
Donna Foltzer Traut '73

### Partner Level \$1,000 - \$2,499

Mary Ellen Stecz Adams '80  
Anonymous  
Dr. & Mrs. Stephen Beck  
Genny Luneack Behne '66  
Mr. & Mrs. Greg Bell  
Julie Naberhaus Bergmann '80  
Kathy Carnes Boylan '56  
Jo Ann Schneider Brems '51  
Mr. & Mrs. Paul Campbell  
Mary McQuaide Conners '77  
Liz Costello Cutter '82  
Mr. & Mrs. Jim & Karen Day  
Mary Lou Busemeyer Dome '63

Margo Hungler Ehemann '83  
Mary Anne Blocker Frey '63  
General Electric Matching Gifts Foundation  
Judy Back Gerwe '78  
Mr. & Mrs. Glenn Hartman  
Lisa Thomas Hartung '80  
Mr. & Mrs. Bob Hauser  
Mr. Michael Haverkamp  
Debbie Fritz Hayes '80  
Hellebusch Charities - Steve & Julie  
Mattei Hellebusch '68  
Mr. & Mrs. Pat Higgins  
Amy Knapmeyer Hilberg '83  
Mr. & Mrs. Martin Hollenbeck  
Mr. & Mrs. Mark Holly  
Barb Rotsching Horner '60  
Mr. & Mrs. Tom Hudie  
Mr. & Mrs. Bill Hunt  
Mr. Tom Lemon & Ms. Lisa Keegan  
Susan Shively Kelly '65  
Mr. & Mrs. Matthew Kemme  
Mary Lou Leugers Kissel '59  
Mr. & Mrs. Jim Kroeger  
Mr. & Mrs. Mark Kuhlman, Laura  
Kuhlman '06 & Sara Kuhlman '10  
Dr. Joyce Kupfer-Mulderig &  
Dr. James Mulderig  
Dr. & Mrs. Alan Laub  
Ron & Cheri Lehrter  
Mr. Robert Leshnak & Ms. Nancy Nix  
Mr. Thomas Leugers  
Nancy & Paul Lorenz  
Emily Luken '86  
Mr. & Mrs. John Maier  
Mr. & Mrs. John Meyer  
Helen Thorpe Miller '54  
Maria Merritt Morris '02  
Linda Strite Murnane '70  
Rev. Robert A. Obermeyer  
Mr. & Mrs. Don Oeters  
Ohio CAT  
Barbara Schmitz Owen '69  
Mr. & Mrs. Hal Pisciotta, Jr.  
Joann Obermeyer Rauh '48  
Mr. & Mrs. Jeff Risk  
Dr. & Mrs. Jerome Rotella  
Karen Arlinghaus Rummel '72  
Mr. & Mrs. Jim Sauer  
Mr. & Mrs. Gerry Schatzman  
Mr. & Mrs. Bill Schlater  
Mr. & Mrs. Mike Schlater  
Dr. & Mrs. Mark Scott  
Cookie Seigel Shanklin '61  
Cherie Guilfoyle Shannon '72  
Jillian Valerius Shute '97  
Mr. & Mrs. Sam Strotman  
The John A Kupfer & Jean M Kupfer  
Family Trust  
Mrs. Carol Thomas  
Mr. & Mrs. David Tobergte  
Mr. & Mrs. Thomas Ujvagi  
Mr. & Mrs. Gerald Ulland  
Margie Bushelman Warnecke '69  
Mr. & Mrs. Jeff Weedman  
Mr. & Mrs. John Wendeln  
Mr. & Mrs. Steve Wilken  
Mr. & Mrs. Tom Young

## Prayer for our Benefactors

Good and loving God,  
In your generosity you shower us with an abundance of grace, and our hearts are filled with gratitude for your kindness. We humbly ask you to shower your blessings upon the generous benefactors of Mount Notre Dame. Their selfless gifts enable us to carry on Saint Julie's mission to educate young women and empower them to

**LEARN** of your goodness in the world,

**LIVE** as faithful witnesses to that goodness,

**LEAD** others with courage and integrity,

And **SERVE** you always.

May our partners in this mission be inspired by the knowledge that their commitment to your greater purpose and our learning community is a gift which bears fruit for all those whom we serve. . . today and in the future.

We make this prayer in the name of Jesus,  
Son of God and Son of Mary.

Amen

## ANNUAL FUND

# Honor Roll of Investors

### 1860 Level \$500 - \$999

Susan Sanders Adams '54  
Joanne Bessler '67  
Leah Callahan '14  
Penny Asbrock Cunningham '67  
Mr. & Mrs. Jerry Davis  
Mr. & Mrs. Jim Dean  
Craig & Kim Drefcinski  
Karen Haines Durchholz '75  
Audrey Dillon Dwyer '57  
Bill & Rose Eckhoff  
Anne Ernst '71  
Dottie Harmon Eveleigh '77  
Fay Elfers Fischesser '49  
Sharon Woeste Garry '83  
Barbara Bockhorst Gerbus '79  
Eileen Parr Gibbs '65  
Cathy Hill Glassmeyer '80  
Mr. & Mrs. Mike Glatt  
Mr. & Mrs. Truitt Graue  
Dr. & Mrs. Mike Guenther  
Diana Condeni Haskell '67  
Katie Heenan '94  
Amy Lang Hessel '97  
Erin Devine Hofmann '91  
Mr. & Mrs. Michael Hoyt  
Dr. & Mrs. Tom Ionna  
Rachel Klosterman Joebgen '08  
Johnson & Johnson  
Dianne Rittenhouse Juenger '70  
Mr. Tom Klosterman  
Mr. & Mrs. Scott Kreider  
Dr. & Mrs. David Malof  
Chris & Emily Geier Maupin '99  
Mr. & Mrs. John McPhillips  
Mr. William E. Menkedick  
Michelle Williams Metzler '94  
Nancy Glassmeyer Meyrose '69  
Mr. George Milbourn  
Mary Thomas Miller '67  
Steve & Mary Frank Minnis '75  
Mr. & Mrs. Daniel Molina  
Mr. & Mrs. David Moss  
Mr. & Mrs. David Muha  
Mr. James Nordlund  
Nancy Doerger Ollier '58  
Sylvia Lacher Osterday '56  
Kathy Fredricks Oswald '65  
Mr. & Mrs. Dave Parry  
Mr. & Mrs. Dick Piening  
Dr. & Dr. David Plas  
Mr. & Mrs. Ken Reeder  
Robert W. Baird & Co. Inc.  
Mr. & Mrs. Nick Rosian  
Cheryl Bellman Schrage '71  
Jackie Schwarber '79  
Jeanne O'Connell Sharpe '63  
Andrea Ventura Smedley '95  
Mr. Matt Sokany & Mrs. Michele  
Macedonio  
Mr. John Stigler  
Sharon Strizak '08  
Mr. & Mrs. James Tepe  
Mr. & Mrs. Kenneth Thomas  
Mr. & Mrs. John Tomasella  
Michele Feliberty Trivedi '86  
Amy Gardner Tyler '97  
Julie Matre Weaver '73  
Pam Wagner Wilson '65  
Mary Lynn Woebkenberg '70

### Foundress Society \$250 - \$499

Mary Agricola '85  
Mr. & Mrs. Jonathan Albers  
Linda Sliter Bird '65  
Kelli Brown '89  
Amanda Cook Brueggemeier '95  
Mrs. Pat Burwinkel

*"We were honored to serve as the 2020-21 MND Annual Fund Chairs. From a first-class education to the outstanding extra-curriculars, MND is clearly committed to providing the very best for its students."*

**John and Tricia Huston  
Kilgore '81**

Mr. & Mrs. Jim Collins  
Pam Albert Corbin '87  
Sue Grau Dempsey '72  
Mr. & Mrs. Jim Donnellon  
Paula Isenmann Down '65  
Mrs. Winnie Eckhoff  
Mr. Dennis Eling  
Mrs.Carolynn Ficke  
Mr. & Mrs. Bill Foltyn  
Alice Faulhaber Frank '66  
Jennifer Jung Gallo '85  
Mr. & Mrs. Michael Gerbus  
Mary Bashe Govan '71  
Gumbleton Family Charitable Trust  
Molly McQuaide Gusweiler '74  
Mr. & Mrs. Matt Guye  
Marie Hahn '98  
Mr. & Mrs. Jim Harold  
Mr. & Mrs. Kevin Havens  
Janice Seurkamp Hayes '64  
Dr. Thomas Hayes & Mrs. Maggie Gajus  
Mr. & Mrs. Christopher Hersey  
Mr. & Mrs. Brent Hill  
Joyce Eling Hoerst '61  
Mr. & Mrs. Steve Honerlaw  
Hormel Foods  
Kathy Haas Huston '67  
Mr. & Mrs. Mark Johnston  
Holly Jones '03  
Mr. & Mrs. Rick Jones  
Kate Hoyt Kamel '03  
Barbara Fasce Kelly '66  
Terri Gertz Kelsey '84  
Terri Butz Kerley '82  
Beth Nettleton King '69  
Mr. & Mrs. Thomas Kloenne  
Mr. & Mrs. Roger Klug  
Mr. & Mrs. David Koch  
Mr. & Mrs. Bill Kuhlman, Jr.  
Teri Cassidy Lacey '81  
Karen Logan '83  
Mary Ann Parnell Maines '61  
Mr. & Mrs. Brian Mansfield  
Mr. & Dr. Michael Marklay  
Mr. & Mrs. Alan Martin  
Ms. Catherine Marvel  
Mr. & Mrs. Paul Mason  
Rose Ann Cooper Matonis '65  
Audrey Eggenberger McCray '09  
Jaime Kneer McDermott '96

Maureen Marous Mears '80  
Charlotte Buchert Melish '62  
MND Student Body  
Mr. & Mrs. James Monton  
Mary Steckler Moore '79  
Andrea Backscheider Neuwirth '06  
Mr. & Mrs. Tom Niehaus  
Marianne Schurig Nishimori '79  
Mr. & Mrs. Mark Noschang  
Mr. & Mrs. Robert Oeters  
Gretchen Osner '61  
Mr. & Mrs. Dan Pelzel  
Mallika Pereira '92  
Mr. Trey Pettibone  
Shirley Schwieter Plahovinsak '71  
Mr. & Mrs. Daniel Rack  
Dr. & Mrs. Gary Ray  
Mr. Jerry Robb  
LouAnn Beresford Robb '65  
Mr. & Mrs. Don Roberts  
Andrea Cinquina Rosenthal '80  
Jana Roszkowski '96  
Debby Steckler Routt '75  
Emily Ryan '04  
Mr. Louis Santoro  
Mr. & Mrs. Rick Schaeper  
Mr. Robert L. Sicking, Jr.  
Mr. & Mrs. Gary Smoller  
Mr. & Mrs. Ken Sovern  
Mr. & Mrs. Darrin Steinmann  
Mr. Patrick Taylor  
Pam Thiemann '82  
Mr. & Mrs. Thomas Urban  
Lucy Sanders Veid '56  
Vonderhaar's Catering  
Mrs. Ashley Woodside  
Mr. & Mrs. Tom Young  
Julie Hagedorn Zude '90, M.D.

### MND Society \$100 - \$249

Karen Schwartz Aielli '76  
Phyllis Wilson Aileen-Donohew '66  
Jane Gilligan Albers '61  
Sue Maly Albert '60  
Geri Cook Alder '72  
Jeanne Emerson Allen '81  
Maggie Altimier '08  
Amazon Smile  
Mary Ann Adleta Amyx '64  
Beth Antenucci '82  
Angie George Arengo '94  
Mr. & Mrs. Ed Armbruster  
Samantha LaBarbera Arrowood '06  
Mr. & Mrs. Jason Arszman  
Mr. & Mrs. Paul Asbrock  
Mr. & Mrs. David Bach  
Mr. Ronald Back  
Mr. & Mrs. Thomas Badinghaus  
Valerie Woll Badinghaus '76  
Connie King Baker '67  
Christy Hoekzema Banke '87  
Terry McQuaide Barbara '79  
Kathy Tholen Bath '61  
Dr. & Mrs. David Bauman  
Dusty Veid Bechtel '76, DVM  
Diane Bechtold '70  
Carly Mears Beck '10  
Martha Bien Beerman '60  
Ms. Amy Benetti  
Kelly Heenan Bergmann '99  
Jeanne Craven Berns '61  
Mr. & Mrs. Paul Betz  
Mr. & Mrs. Dave Bingham  
Mr. & Mrs. Doug Black  
Mary Ann Mogan Blome '52  
Rachel Frank Bluhm '11  
Mr. & Mrs. Kevin Blum  
Christine Glatt Bode '89  
Mr. & Mrs. Dan Boeckman  
Mr. & Mrs. Rick Bohne  
Sue Buerger Bonnette '60  
Chloe Meyer Braun '11  
Mr. & Mrs. Brian Brehm  
Mr. & Mrs. Clyde Brenner  
Mr. & Mrs. William Breyer  
Eileen Sauer Breyley '75  
Cindy Wagner Bricking '92  
Lydia Brinkmann '16  
Mr. & Mrs. Tom Brinkmann  
Charlene Ackley Brisben '64  
Stacy Gigliotti Broenner '94  
Terry Brotherton '74  
Mr. & Mrs. David Brown  
Mrs. Maryhelen Browning  
Mr. Robert Browning  
Denny DuPriest Brune '71  
Michelle Grammel Buehler '82  
Sharon Siefert Bukaty '81  
Kelly Cutter Burger '12  
Caley Burke '00  
Nicole Gertz Burke '94  
Mr. & Mrs. Tom Burks  
Dr. & Mrs. Darrell Burnett  
Vicki Harmeyer Burris '79  
Mr. & Mrs. Joseph Butkovich  
Phyllis Sherrer Butterworth '71  
Paula Kennedy Call '70  
Mr. & Mrs. Dave Campbell  
Annie Carl '97  
Kaylee Carmack '23  
Mr. & Mrs. Jim Carroll  
Amy Goddard Celis '02  
Mr. & Mrs. John Cengel  
Mary Back Chaney '69  
Kate Wright Chisholm '82  
Mrs. Barbara Christman  
Faye Clements '77  
Erin Satzger Clemons '04  
Coca-Cola Bottling Co.  
The Coffey Family  
Mr. John Cole  
Mr. & Mrs. Tom Collett  
Caitlin Blaut Comer '08  
Eileen Albrinck Compton '67  
Carolynn Planitz Conboy '65  
Mr. & Mrs. Michael Conlon  
Kathy Marous Contadino '79  
Marlene Burckard Cook '69  
Mr. & Mrs. William Corbett  
Linda Cornell '71  
Sue Geyman Cortesi '62  
Frances Gessing Costello '45  
Linda Schmidt Costura '65  
Mr. & Mrs. David Craft  
Jean Schneider Crockett '69  
Danielle Wampler Culbertson '03  
Amy Sutliff Curtis '80  
Kathy Ryan Czerwonka '80  
Kathleen Daly '64  
Lori Shelley Daniels '98  
Mr. & Mrs. Karl DeBord  
Mr. & Mrs. Chris DeLuca  
Chris Lynd Deters '83  
Jill Devine '84  
Mr. Albert Dierckes, Jr.  
Mr. & Mrs. Michael DiLeonardo

# Honor Roll of Investors

Rachael DiLeonardo '12  
 Laura Dittrich '09  
 Mr. & Mrs. William Dodds  
 Mary Lou Smith Dollenmayer '56  
 Cece Bucheit Donovan '64  
 Meghan Inna Donovan '98  
 Gail Rath Dorsey '87  
 Joan Beeber Doyle '78  
 Mr. & Mrs. John Drayer  
 Madeline Duckworth '10  
 Mary McGing Duckworth '75  
 Cheryl Angst Duncan '82  
 Kristi Duncan '14  
 Ashley Towle Dutton '10

Barbara Gibbons Greiwe '77  
 Jayne Fehring Grimm '77  
 Dr. & Mrs. Tom Grimm  
 Diana VonDenBenken Grinkemeyer '76  
 Karen Kerkhoff Gromada '68  
 Amy Heenan Gruppo '89  
 Sarah Arlinghaus Gulley '00  
 Elizabeth Guye '13  
 Cheryl Giesler Haag '64  
 Kathy Schulkers Harmeyer '69  
 Lynne Bath Harris '82  
 Mr. & Mrs. Paul Harris  
 Rosemary Pelstring Harris '69  
 Jane Bruns Haslem '81

Mr. & Mrs. Jeff Hudie  
 Mrs. Carol Huggard  
 Julie Baron Hughes '62  
 Mr. & Mrs. Jason Huiet  
 Tricia Reed Humphreys '88  
 Ben & Reen Hunt  
 Emily Gruber Hurley '95  
 Mr. & Mrs. Matt Ipsa  
 Sarah Thamann Irey '94  
 Lisa Koebbe Jamison '98  
 Carolyn Eggenberger Jansen '10  
 Julie Jasontek '88  
 Bob & Lisa Wagner Jennings '93  
 Nancy Vonderheide Johns '63  
 Cindy Heckel Johnson '79  
 Patrice Woll Jones '71  
 Cindy Judd '73  
 Laura Griga Julian '80  
 Mr. & Mrs. Leonard Kaes  
 Pam Gerstemeier Kalb '88  
 Mary Ann Faith Kalla '63  
 Jennifer Teismann Kappler '65  
 Mr. & Mrs. Richard Kemp  
 Ms. Suzanne Kemper  
 Ms. Joan Kennedy  
 Robyn Kerley '12  
 Linda Theis Kibblewhite '74  
 Debbie Medosch Kirkpatrick '77  
 Ms. Kathy Kishpaugh  
 Linda Ferkenhoff Knapmeyer '61  
 Judi Huber Knecht '61  
 Joan Leinberger Koebel '62  
 Lori Sauer Konkoly '85  
 Mrs. Dianne Koop  
 Donna Krabbe '67  
 Mr. & Mrs. John Kraimer  
 Mr. & Mrs. Joe Krause  
 Pat Blocker Kremers '71  
 Mary Kay Goldschmidt Kristofferson '71  
 Mr. & Mrs. John Kuempel, Sr.  
 Judy Brigger Kuethe '60  
 Judy Wirtz Kuhl '62  
 Mrs. Marjorie Kuhlman  
 Michelle Lacey '04  
 Mr. & Mrs. Doug Lammers  
 Mrs. Margaret Lang  
 Rose Lavelle '13  
 Barb Brenner Laxton '68  
 Tina Houston Leder '96  
 Eileen Legaspi-Wilson '05  
 Barbara Eveslage Lehrter '62  
 Sheila Voegele Lehrter '70  
 Julie Ebbeler Leonard '85  
 Teresa Harmon Leugers '75  
 Mary Kay Doerger Levesay '65  
 Janet Carrigan Lindle '62  
 Ellen Eberenz Long '91  
 Teresa Lukey Long '01  
 Vada Patterson Love '71  
 Julie Donnellon Lovell '77  
 Mr. & Mrs. Jim Luers  
 Anita Lukey '04  
 Mr. & Mrs. Steve MacDougal  
 Erin Mackey '07  
 Mr. & Mrs. Larry Mackey  
 Mr. & Mrs. Robert Mackey  
 Mr. & Mrs. Ira Madden  
 Sophia Madden '23  
 Cathy Bressert Magold '91  
 Angela Nardini Markle '97  
 Ellen Edelmann Marks '78  
 Tori Shawver Marshall '00  
 Mrs. Terri Mastin  
 Maria Mattei '12

Martha Schmitt McCarthy '58  
 Pam Harmeyer McCormack '68  
 Mr. & Mrs. John McElwee  
 Kendall McKee '14  
 Mr. & Mrs. Shawn McKee  
 Ms. Donna McKenna  
 Karen Albert McNally '84  
 Linda Fladung Meiser '65  
 Pat Meisner '66  
 Judy Janson Mellott '53  
 Mr. & Mrs. Norbert Menke  
 Sue Cirino Merland '65  
 Cindy Reagan Miller '70  
 Mrs. Rosemarie Moenster  
 Tara Nahrup Morris '97  
 Allison Jostworth Moser '95  
 Mr. & Mrs. Kevin Mulcare  
 Mackenzie Mulcare '20  
 Mr. & Mrs. Rick Mullen  
 Molly Mullinger '10  
 Mr. & Mrs. Joseph J. Murphy  
 Jeri Ihlendorf Murray '70  
 Michele Kroth Naish '74  
 Maryann Nardini '76  
 Lauren Costello Neises '06  
 Leslie Meyer New '77  
 Krista Paas Nicholas '90  
 Dr. B. Gayle Niehaus  
 Mr. & Mrs. Bernard Niehaus  
 Theresa Kuntz Niehaus '82  
 Mr. & Mrs. Doug Nunn  
 Diana Weinheimer Oberschmidt '74  
 Annette Wuennemann Obert '67  
 Mary Potticary Obert '75  
 Mr. & Mrs. Mark Oelrich  
 Mr. & Mrs. Frank O'Neill  
 Lindsay Owens '06  
 Mrs. Francie Pavey  
 Mr. & Mrs. Anthony Pennisi  
 Julie Balbach Peters '78  
 Sue Carnes Peters '58  
 Tami Hoekzema Peters '85  
 Mr. & Mrs. Robert Pettibone  
 Barbara Pflanz '72  
 Mary Alice Pharo '43  
 Kelly Pontius '06  
 Gail Glassmeyer Pryse '81  
 Anne Schramm Purdue '79  
 Mrs. Joan Rakel  
 Mindy Reed-Morrice '11  
 Sarah Bohlen Reigle '10  
 Roxie Brotherton Reinert '69  
 Mr. & Mrs. Steven Reutelschfer  
 Susan Bradfield Reyher '67  
 Mr. & Mrs. Patrick Richards  
 Mrs. Helen Robb  
 Jane Karlak Robbins '97  
 Mr. Bernard Roberts  
 Carol Williams Roberts '80  
 Shery Mack Roebel '84  
 Cathy Bushelman Roelker '71  
 Mr. & Mrs. Donald Rogers  
 Teri Perin Rohan '76  
 Marianne Schwertman Rohlf's '74  
 Emily Rotella '08  
 Debbie Hennel Rouse '86  
 Liane Rousseau '08  
 Linda Morgan Rubens '66  
 Mr. & Mrs. Jim Rudol  
 Mr. & Mrs. David Rudy  
 Theresa Magro Ruebusch '68  
 Mary Sedmak Ruscher '78  
 Nancy TenBieg Ryan '52  
 Diane Buer Ryder '75



Mrs. Cynthia A. Eckerle Bertke  
 Mary Ann Herman Eckert '68  
 Mr. Ray Eckes  
 Janet Steman Edelmann '51  
 Diane Sauer Eisele '65  
 Mr. & Mrs. Al Eling  
 Joyce Hoerst Eling '67  
 MJ Eling '66  
 Mary Wersel Engel '62  
 Sue Mahlsing Erdman '77  
 Mr. Jack Ernst  
 Mr. & Mrs. Doug Ernstes  
 Pamela Porta Ewton '76  
 Lisa Schoettker Fagin '79  
 Susan Schmidt Fahrmeier '65  
 Katie Fasola '16  
 Carol Moeggenberg Faulhaber '63  
 Mr. & Mrs. Gregg Feltrup  
 Mr. & Mrs. David Filipowski  
 Jane Moeggenberg Fink '64  
 Kathi Klingenberg Fitzpatric '70  
 Mr. & Mrs. Henry Fleck  
 Mary Ann Twidale Flynn '78  
 Dr. James & Dr. Lauren Fortman  
 Mr. & Mrs. Kevin Fox  
 Mr. & Mrs. Donald Frericks  
 Katie Weisbrod Freson '06  
 Mr. & Mrs. Dave Frey  
 Joanne Pfister Fuchs '62  
 Patricia Rouse Gabriel '56  
 Krista Gadzala '85  
 Caroline Gallo '15  
 Concetta Overberg Geraci '76  
 Connie Gerdes '83  
 Mr. & Mrs. Richard Gerwe  
 Mrs. Karen Gerwel  
 Pam Gibbons '66  
 Andrea Knollman Gier '04  
 Joyce Moeggenberg Gilbertson '59  
 Mr. & Mrs. Bill Goslee, Jr.  
 Wendy Durham Gottenbusch '89  
 Danielle Meyer Greaves '04  
 Kelsey Green '13

Maddie Haubner '13  
 Madeline Cavanaugh Hautz '57  
 Julie Miller Haverland '65  
 Jacki Hertenberg Heard '66  
 Pam Keller Heenan '65  
 Molly Heister '10  
 Roseann Lichtenberg Hemauer '63  
 Kim Kappler Hewitt '92  
 Mrs. Jeanette Hildebrandt  
 Molly Hildebrandt '11  
 Mr. & Mrs. Rob Hildebrandt  
 Anne Harsch Hinman '68

**Are you looking for a simple, seamless, and budget-friendly way to financially support MND? Consider setting up a monthly or quarterly RECURRING GIFT! It's so easy!**

[www.mndhs.org/support](http://www.mndhs.org/support)

Mr. & Mrs. Robert Hinman, Jr.  
 Katie Hoekzema '97  
 Marianne Fassnacht Hoekzema '65  
 Bridget Hoerst Hoffman '95  
 Mr. & Mrs. Ken Hoffman III  
 Mr. Joe Holtman  
 Mr. Michael Holtman  
 Nancy Kettler Hopkins '84  
 Vince & Julie Hopkins  
 Mr. & Mrs. Scott Home  
 Bridget Grau Hoskins '08  
 Kristen Robinson Hoskinson '01  
 Mr. & Mrs. Nick Hosmer

## ANNUAL FUND

# Honor Roll of Investors

Connie Samuelson '71  
Heather Doten Sauer '93  
Jan Feldhaus Savage '57  
Mr. & Mrs. Chris Schlichter  
Mr. & Mrs. Greg Schlick  
Barb Fern Schmidt '56  
Peggy Schmitz Schmidt '84  
Mary Carole Storer Schneider '79  
Mr. & Mrs. William Schneider, Jr.  
Mr. & Mrs. J Schomaker  
Catherine Schulte '79  
Mr. & Mrs. Gary Schulte  
Mr. & Mrs. Chris Schuppe  
Cristina Seda-Hoelle '92  
Kristin Heskamp Seiler '98  
Alexa Weston Shanahan '08  
Mr. & Mrs. Daniel Shaw  
Mr. & Mrs. Leslie Shawver, Jr.  
Joan Amorini Sheehan '72  
Kathy Beimesche Sheldon '91  
Mr. & Mrs. Tom Sheldon  
Pam Broerman Shelton '72  
Caitlin Shipp '12  
Mrs. Nora Shumrick  
Shannon Storm Sieg '93  
Mr. & Mrs. Brent Sitarski  
Jennifer Strasser Smith '94  
Mr. & Mrs. Keith Smith  
Mr. Michael Smith  
Nancy Middendorf Smith '60  
Stephanie Seibert Smith '00  
Terri Montag Smith '73  
Rose Ross South '86  
Ellen Mettey Spaeth '79  
Kristin Wiwi Spatz '87  
Pat Lienemann Sphar '66  
Cheri Cunningham Stacey '71  
Mrs. Kathleen Stack  
Angie Stallo-Kramer '91  
Mr. & Mrs. Dave Statzer  
Debbie Reder Stebelton '67  
Pam Schneider Steinmetz '87  
Dawn Stiens '85, DVM  
Sis Eysoldt Stoffo '62  
Lois Glaser Stolz '49  
Jackie Segrist Strain '64  
Barb Kathman Strauss '72  
Sr. Rita M. Sturwold, SNDdeN  
Kelly Tholke Sullivan '98  
Annette Hilvert Sussli '81  
Mr. & Mrs. Bill Tackus  
Holly Janson Tanner '79  
Christina Vangeloff Tarnowski '05  
Connie Judd Taylor '71  
Joy Wilson Thaler '74  
Mrs. Katie Thiemann  
Sheila Gillespie Thompson '66  
Caitlin Kloppenburg Timmons '09  
Mr. & Mrs. John Tishaus  
Dr. & Mrs. Drake Tollefson  
Jessica Towle '15  
Martha Flynn Trydahl '97  
Mary Helen Laumann Turcott '62  
Karen Bubak Udom '96  
Sandy Villari '70  
Eileen Corcoran Von Holle '64  
Nancy Lutz VonBenken '65  
Jen Vonderbrink '11  
Mary Ashbrock Vonderbrink '76  
Kathy Morgan Vonderhaar '77  
Wilma Rohlf's Vonderhaar '63  
Ms. Kathleen Vorholt  
Ms. Judith Wagoner  
Mr. & Mrs. James Wahl

Donna Mustard Walsh '72  
Mr. & Mrs. Patrick Walsh  
Julie Wade Walulik '92  
Gloria Estep Wamsley '67  
Mr. & Mrs. Greg Waning  
Katie Rahe Warnecke '98  
Miss Angela Watson  
Tammy Weber-Ridener '89  
Mr. & Mrs. Chad Weikert  
Mr. & Mrs. Marvin Weikert  
Lynn Schatzman Welch '94  
Jackie Donnellon Welling '76  
Janet Welling '83  
Lynn Ostholthoff Welty '77

Are you grateful  
for your MND  
education, or that  
of your daughter or  
granddaughter?

Consider a gift to  
pay it forward!

Kathryn Wesseler '68  
Helen Obermeyer Whalen '47  
Mr. & Mrs. Steven Wiesman  
Katie Margolies Wietmarschen '98  
Angie Creeden Wilking '92  
Kathy Hughes Wilking '73  
Anne Vonderbrink Wilkinson '78  
Mary Vennemeyer Williams '53  
Margo Wiltshire '90  
Barbara Benken Wimprine '64  
Mr. & Mrs. Robert Winterman  
Kathy Ries Wissel '70  
Mr. & Mrs. Scott Wittman  
Barb Zwick Wolf '72  
Mr. & Mrs. Daniel Wolf  
Linda Pate Wolf '69  
Audrey Wolfer '21  
Mr. & Mrs. Michael Wolfer  
Tricia Mullen Wolfer '93  
Nancy Pesa Wolke '61  
Ellie Wolterman '20  
Julie Holthaus Woodward '76  
Katie Markgraf Wright '10  
Debbie Rieder Yee '70  
Mr. & Mrs. Raymond Yunkunis, Jr.  
Dorothy Benken Zahner '71  
Cheryl Frey Zaidan '71  
Mr. Martin Ziegler

### Friend \$99 & Below

Sue Allen Ackley '70  
Helene Backscheider Adkins '04  
Allison Kreiner Albertz '96  
Mary Palopoli Albright '63  
Mr. Dennis Albrinck  
Sue Malloy Albrinck '64  
Lisa Scheuerle Alexander '89  
Jeanne Lewe Alsmeyer '51  
Mr. & Mrs. Peter Anderson  
Anonymous

Denissa Ariestanto '22  
Jeanette Teismann Arlinghaus '68  
Mary Beth Donahue Armstrong '77  
Donna VonHolle Arnold '70  
Joan Young Arnold '81  
Maria Gallagher Arnold '11  
Pat Merkle Artist '68  
Mr. Frank Auciello  
Jennifer Babak '05  
Kim Back '94  
Lydia Backscheider '11  
Ms. Elizabeth Badinghaus  
Barb Bailey '21  
Hannah Bailey '21  
Donna Corsmeier Bain '69  
Kim Hardesty Baker '03  
Megan Condit Balbach '08  
Claudia Banke '21  
Karen Back Bankemper '84  
Nancy Skillman Barger '59  
Mr. & Mrs. David Barnes  
Diane Brisben Barnes '61  
Julia Barnes '19  
Kim Wagner Barrett '05  
Caroline Batt '21  
Gerry Johnson Bauman '60  
Karen Obert Bayliff '94  
Lori Jung Bean '94  
Annabel Beatty '21  
Ann Becker '71  
Sr. Paula Marie Becker, SNDdeN  
Ruth Bedinghaus '69, SNDdeN  
Mr. John Beiting  
Ruth Baillargeon Beiting '71  
Mr. & Mrs. Gerald Beitman  
Julianne Smith Bell '07  
Kara Friedmann Bell '09  
Mary Wilz Bell '68  
Lindsey Benhase '19  
Nancy Bushelman Berling '76  
Pat Topmiller Berryhill '65  
Janet Bessler '64  
Rebecca Clubb Bidinger '88  
Jennifer Biele '08  
Mr. & Mrs. Edward Billiter  
Nadia Bingham '21

Jamie Boeckman '99  
Stacy Boeckman '00  
Katie Bohlen '13  
Mr. & Mrs. Dan Bohlen  
Dianne Glorius Boland '62  
Emily Camp Bonar '98  
Ms. Amy Bonino  
Maria Bonino '16  
Molly Bonino '17  
Mr. & Mrs. John Bowblis  
Ms. Margaret J. Bowen  
Julie Eling Bower '94  
Nancy Knapmeyer Bowles '87  
Kaitlin Corbett Bowlin '06  
Kelly Friedmann Brady '05  
Beth Vonderbrink Brandner '05  
Katie Hostiuck Branson '01  
Mrs. Shelly Brauer  
Stephanie Lichtenberg Brausch '91  
Grace Brecht '20  
Allison Muennich Bredestege '06  
Mary Pierce Brenner '98  
Mr. & Mrs. Robert Brinck  
Beth Amorini Brinkman Dugan '79  
Mary Brodbeck '62  
Julie Lichtenberg Bronner '91  
Rachel Bronner '14  
Rosanne Mersch Brooks '70  
Betsy Brothers '69  
Holly Laub Brown '11  
Bev Reder Brownfield '72  
Mary Kohne Brownfield '82  
Mr. & Mrs. Charles Browning  
Gina Wernke Brownstead '87  
Beth Schuster Brozzart '68  
Amy McGrath Bruno '85  
Rose Boehm Bruns '69  
Teri Ulland Bucheit '94  
Callie Buck '13  
Catherine Buck '14  
Emily Buck '16  
Ms. Constance Buckley  
Mr. & Mrs. Thomas Buckley  
Mr. Paul Buelterman  
Stacey Buescher '05  
Sue Reilly Buescher '80



Tina Linesch Black '85  
Leah Black '20  
Megan Witte Black '04  
Mrs. Diane Blazer  
Ms. Kenyen Bloe  
Jennifer Jacob Blomer '96  
Judy Cremering Blomer '66  
Betsy Hoekzema Bobst '90

Patti Gray Buisson '70  
Nikki Robinson Bunch '00  
Linda Harmon Burgdorf '78  
Mr. & Mrs. Jason Burkey  
Jessica Burris '15  
Colleen Butler '11  
Erin Cagle '18  
Kayla Cagle '14



# Honor Roll of Investors

Mr. & Mrs. William Cagle  
 Diana Woebkenberg Campbell '62  
 Pat Brotherton Campion '71  
 Kara Kindel Canfield '09  
 Kimberly Capehart '06  
 Chris Barnhorn Carozzoni '78  
 Mrs. Carol Carpenter  
 Allison Carr '12  
 Ms. Muriel Casavant  
 Sarah Kohl Chasteen '11  
 Mr. Kenneth Chatlos  
 Mr. & Mrs. David Cherry  
 Jennifer Rohan Christensen '05  
 Amanda Clark '19  
 Jeanne Finen Clark '47  
 Linda Wiesner Clark '66  
 Mr. & Mrs. Douglas Clarke  
 Maddie Clarke '23  
 Kristine Wersel Coe '07  
 Dorie Coggin '17  
 Brianne Harrison Cohen '11  
 Elena Colby '16  
 Mr. & Mrs. Ron Combs  
 Lindsey Romes Compton '04  
 Caitie Connell '14  
 Mr. & Mrs. James Connell II  
 Missie Mitsch Conner '88  
 Mary Beth Kreidler Conover '60  
 Amie Adkins Cook '06  
 Mr. & Mrs. Doug Cooper  
 Ms. Barbara Copeland  
 Angela Santel Copsey '03  
 Mrs. Shannon Corbin  
 Ms. Eileen Corder  
 Maureen de St. Aubin Corgiat '03  
 Liz Keane Coughlin '85  
 Barb Hesse Coyle '68  
 Elaine Crable '67, PhD  
 Mrs. Joan Crable  
 Eileen Thomas Creeden '71  
 Rachel Creeden '19  
 Ellen Crema '10  
 Autumn Crockett '21  
 Lindsay Cronin '13  
 Pat Hoerst Crowder '66  
 Candace Crowley '11  
 Anissa George Cundall '97  
 Caroline Cusick '15  
 Mary Jo Albertz Custer '53  
 Kimberly Cutter '09  
 Rachel Creevy D'Errico '08  
 Dottie Meyer Dailey '61  
 Mr. & Mrs. Michael Daley  
 Nora Daley '23  
 Ms. Patricia Dannemiller  
 Mr. & Mrs. Jim Darland  
 Erin Day '99  
 Mr. & Mrs. Jerry Day  
 Kelsey Day '15  
 Amy Dean '14  
 Patty Miller Dean '71  
 Vicki Bollmer Decker '64  
 Caroline DeGroff '17  
 Mr. & Mrs. John DelRosso  
 Mr. & Mrs. Paul Derrick  
 Mr. & Mrs. John DeVore  
 Samantha DeVore '15  
 Mr. & Mrs. Tom Dickert  
 Charissa Diekmeyer '95  
 Lisa Ulmer Dierkers '79  
 Mrs. Joan Dierkers  
 Nancy Collins Diesel '60  
 Lauren DiNardo '11  
 Susan Lesley Dixon '64

Sarah Dodds Doepker '95  
 Mr. William Doering  
 Ann Becksmith Donahue '75  
 Mr. & Mrs. Gerry Donahue  
 Ms. Ann Drayer  
 Payton Drefcinski '18  
 Skylar Drefcinski '16  
 Dianna Corsmeier Driscoll '61  
 Sarah Drumm '14  
 Ms. Janis Dugle  
 Mr. & Mrs. Roger Dunigan  
 Kathy Brausch Dunn '63  
 Ms. Ayasa Durant  
 Diane DeSalvo Duritsch '62  
 Mr. & Mrs. Harold Eberenz  
 Mary Jane Klingenberg Ebert '72  
 Mr. & Mrs. Edward Eckert  
 Hanna Eckhoff-Kremer '08  
 Mr. & Mrs. David Eckley  
 Kacy Eckley '15  
 Vicki Mastruserio Eckstein '74  
 Emily MacLeod Edwards '06  
 Mary Effler '74  
 Margaret Ehlen '20  
 Jenna Ehrler '18  
 Kelly Kirby Ehrnschwender '99  
 Amy McMahan Elam '11  
 Laura Elliott '08  
 Katie Kubale Epling '04  
 Chris Kolkmeier Ernst '89  
 Mr. & Mrs. Gregory Ernst  
 Annie Wessendarp Ester '09  
 Laura Ostholtzoff Estes '86  
 Betty Vonderhaar Evans '65

**Join over 70 MND families that have established an endowed scholarship in their name. It makes an incredible impact on the future of MND and the students it benefits. This type of investment lasts forever!**

**Visit [www.mndhs.org/scholarships](http://www.mndhs.org/scholarships) for more information.**

Vickie Ornella Evans '65  
 Ann Blomer Everly '87  
 Hannah Eversole '21  
 Mr. & Mrs. Lonnie Eversole  
 Ellie Fagin '24  
 Ann Eling Falci '91  
 Mr. & Mrs. Andrew Falk  
 Ms. Victoria Faller  
 Amy Durchholz Farr '80  
 Courtney Fasola '13  
 Kennedy Feathers '21  
 MacKenzie Feathers '14  
 Bridget Felczan '18  
 Emily McCabe Feldman '02  
 Julia Feldmann '20  
 Cindy Turney Feltnan '79  
 Mr. Joseph Ferguson  
 Vicki Meno Ficke '73

Beth Bause Finn '85  
 Jacki Fischer '85  
 Susan Schmidt Fischesser '65  
 Lilly Fisher '18  
 Clare Stauss Fister '61  
 Erin Flanagan '17  
 Eileen Gruener Flege '61  
 Megan Gerwel Forbis '95  
 Caroline France '20  
 Veronica France '18  
 Yvonne Molina France '61  
 Mr. & Mrs. Mark Frank  
 Brooke Frazier '17  
 Anne Scollard Fredrickson '75  
 Angela Ernst Frith '92  
 Mr. & Mrs. Fred Fritz  
 Lily Fritz '21  
 Elizabeth Deutsch Fuhler '11  
 Judy Poppe Fulcher '85  
 Alexis Cox Fulton '02  
 Linda Heile Fye '71  
 Ms. Kaye Gaffney  
 Laney Gallagher '16  
 Michelle Richter Ganim '78  
 Debbie Knueven Gannaway '70  
 Molly Knapmeyer Ganz '93  
 Mr. & Mrs. Carlos Garcia  
 Melissa Bobinski Garris '05  
 Emma Garry '14  
 Ms. Jean Garry  
 Judy Wallet Gates '60  
 Mr. & Mrs. Jim Geers  
 Pat Franer Geeslin '66  
 Bonnie Gronefeld Geiger '73  
 Danielle Schuckman Geiman '02  
 Isabella Geraci '20  
 MacKenzie Gerdes '13  
 Mr. & Mrs. David Germano  
 Sophia Germano '21  
 Connie Klopmeier Gerwe '60  
 Karli Gerwel '21  
 Lauren Anderson Gesenhues '08  
 Mrs. Carol Gessing  
 Kathy Gibbons '76  
 Kelley Gilreath '00  
 Taylor Mitchell Gilmer '01  
 Mr. & Mrs. Todd Glass  
 Tracy Ulland Goldie '91  
 Julie Sicker Goldman '70  
 Denise Baum Goldschmidt '86  
 Britta Halpin Golueke '06  
 Mr. & Mrs. Bradford Gosky  
 Megan Goslee '14  
 Mr. & Mrs. Martin Goss  
 Caroline Gott '19  
 Marlene Lacher Grabel '63  
 Meredith Murphy Grasso '95  
 Caroline Graue '20  
 Cynthia Gray '81  
 Mr. & Mrs. Jim Gray  
 Jill Horner Greene '83  
 Carol Voegele Greenwood '60  
 Beth Gregory '06  
 Jocelyn Gregory '97  
 Marcia Maugle Greiner '59  
 Jessie Gries '16  
 Mr. & Mrs. Thomas Gries  
 Lisa Ostholtzoff Griffin '90  
 Kate Anderson Grimm '06  
 James & Donna Groene  
 Libby Carroll Groskopf '91  
 Penny Mueller Guerity '66  
 Ms. Andrea Guerrette  
 Sherry Brofftt Guess '64

Mrs. Rita Gullette  
 Kelly Gurren '12  
 Leah Gutzwiller '19  
 Mary Angela Guye '18  
 Mr. & Mrs. David Hack  
 Debbie Roma Haines '74  
 Mr. & Mrs. Scott Hale  
 Judy Donnellon Hall '85  
 Peg Auciello Halpin '79  
 Skylar Halpin '08  
 Ms. Julie Hamilton  
 Jane Cravaack Hanna '63  
 Mrs. Ginny Hansman  
 Zoey Harig '20  
 Samantha Harold '21  
 Kate Harrow '97  
 Dottie Hessler Hathorn '67  
 Beth Warning Haubner '11  
 Patty Rolver Haumesser '73  
 Devin Hayes '08  
 Sarah Heard '20  
 Jenna Vanden Eynden Heck '04  
 Katie Walker Hefner '05  
 Megan Heidel '10  
 Mr. & Mrs. Ken Heile  
 Vicky Eiser Heile '81  
 Mr. & Mrs. Pete Heister  
 Ms. Betty Heldman  
 Irene Westerkamp Herbers '55  
 Ava Puthoff Herbig '78  
 Ruby Steele Herbst '82  
 Mr. & Mrs. Bob Herman  
 Mary Jo Noschang Hertlein '84  
 Bri Heverin '18  
 Julie Reynolds Hicks '85  
 Mr. & Mrs. Larry V. Hill  
 Katie Hindersman '18  
 Bryn Henry Hoctor '05  
 Julia Hoefling '19  
 Becky Hoerst '00  
 Devon Hoffman '19  
 Morgan Hoffman '17  
 Tara Collett Hogel '03  
 Megan Florea Holcomb '05  
 Nancy Pierce Hollmann '77  
 Carolyn Hoog Holterman '64  
 Mr. & Mrs. Dave Holthaus  
 Mrs. Elaine Holtman  
 Linda Muennich Homan '71  
 Mr. & Mrs. Butch Homoelle  
 Kathryn Hook '12  
 Abbey Hopkins '11  
 Mrs. Margaret Hornschemeier  
 Carolyn Christensen Horst '63  
 Amy Horton '19  
 Sarah Horton '19  
 Mr. & Mrs. Wayne Hoskins  
 Ms. Lisa Houser  
 Sue Lohmueller Howard '72  
 Nancy Wohleber Hoye '69  
 Mr. & Mrs. Kip Hubbard  
 Debbie Bosse Hufft '80  
 Charmaine Asbrock Hughes '62  
 Janet Kellogg Huninghake '60  
 Mr. & Mrs. Dan Hunt  
 Paula George Hutchison '79  
 Molly Roettgers Ihlendorf '06  
 Ms. Barb Inman  
 Debi Soellner Inman '79  
 Rachel DeLord Irwin '11  
 Deni Swartzbaugh Isaacson '69  
 Lori Burkhardt Jackson '81  
 Callie Jacobs '21  
 Mr. & Mrs. Lawrence Jacobs III

## ANNUAL FUND

# Honor Roll of Investors

Jules Jefferson '20  
Sydney Jefferson '18  
Kennedi Johnson '21  
Mr. & Mrs. Dennis Jones  
Jill Jackson Jones '70  
Claire Miller Jordan '05  
Mr. & Mrs. Charles Juengling  
Mary Fago Justice '80  
Molly Kaes '21  
Kelly Kaiser '02  
Mr. Nelson Kaiser  
Kim Keels '79  
Cherie Weber Keller '93  
Mr. & Mrs. Tom Keller  
Janelle Koop Keller '99  
Ms. Molly Kelly  
Sue Strittmatter Kelly '73  
Alli Kelsey '10  
Chris Kelly Kelsey '80  
Lea Lingardo Kemme '05  
Cindy Nieman Kemper '73  
Tara Huwel Kennedy '90  
Mary Ann Strittmatter Kenyon '68  
Sr. Marilyn Kerber, SNDdeN  
Maureen Sweeney Kerkhoff '74  
Carmen Kerley '17  
Sandy Kersey Kerns '70  
Angela Keppler Keryeski '05  
Charlene Schneider Kiefer '59  
Juanita Kindel '83  
Caroline Middendorf Kinsella '15  
Karen Scherl Klaus '96  
Judy Decker Klefas '67  
Lisa Ille Klein '92  
Tina Woll Klonne '79  
Mr. & Mrs. Steve Klonne  
Mrs. Fran Klosterman  
Julie Hammer Knight '88  
Katie Poulin Knight '07  
Mr. & Mrs. T. J. Knoll  
Mr. & Mrs. Kenneth Knollman  
Annemarie Koch '12  
Audrey Sieber Koch '53  
Jennifer Lynch Koerner '98  
Mr. & Mrs. Kevin Kohls  
Syd Kohls '21

Ms. Ursula Kress  
Marianne Zwick Krismer '70  
Cecilia Boehm Krusling '72  
Ms. Mary Krysztofak  
Krista Kuhlman '12  
Sara Kuhlman '10  
Mrs. Kathleen Kuhn  
Lauren Lacey '11  
Mr. & Mrs. Raymond Ladouceur  
Mr. & Mrs. Thomas Lake  
Linda Feldkamp Lamarre '65  
Pat Volle Lane '72  
Kelly Stark Lang '91

**"Building a strong endowment will ensure that Mount Notre Dame's Catholic education will be available to young women for generations to come."**

**Marianne Hoobler Staubach '60**

Natalie Starvaggi Lang '07  
Mr. & Mrs. Andrew Lange  
Barb Mueller Larbes '68  
Liz Strittmatter Large '69  
Pat Connor Leder '66  
Chris Walker Lederle '88  
Maddie Lees '15  
Mr. Mel Lehrner  
Sarah Hamilton Leinberger '70  
Caroline Leonard '18  
Mr. & Mrs. Raymond Leonard  
Sydney Leshnak '17  
Emma Stiver Lesko '11  
Mr. & Mrs. Irv Lieberman  
Elizabeth Haverkos Liederbach '08

Ms. Marge Luken  
Jennifer Hoffman Lukes '97  
Mr. & Mrs. Tom Lukey  
Dee Finkbeiner Lynd '60  
Jourdhel Mabunay '18  
Ms. Elizabeth MacDougal  
Diane Riesenber Mack '72  
Kelley Holliday Maddux '05  
Ann Lehrter Madsen '81  
Mr. & Mrs. Alexander Madyda  
Lizzie Madyda '21  
Randi Mailhot '20  
Jill Stephens Majo '08  
Becca Volk Mandru '05  
Amy Cornwell Mangano '03  
Mr. & Mrs. James Mappes  
Jennifer Marks '11  
Julianne Marks '13  
Mr. Al Marous  
Leah Martin '21  
Louise Doherty Martin '79  
Sunny Warther Martin '71  
Maggie Folzenlogen Martino '05  
Jeri Maschinot '65  
Anna Mattei '18  
Mr. & Mrs. Robert Mayer  
Gabbi Mayne '21  
Kristen McBride '21  
Elisa McClellan '21  
Mary McClellan '05  
Kathy McConkey '70  
Ms. Larcine McDonald  
Natalie Hansman McDonald '08  
Ms. Elaine McGuire  
Kathy Greiwe McKinney '60  
Julie Dean McMahan '06  
Jan Wernery McNeil '76  
Jennifer McPeters '05  
Kris Carey Meade '72  
Emily Mechley '21  
Mrs. Mary Mecklenborg  
Carolyn Medosch '63  
Lois Welsch Mehring '62  
Lindsay Melia '05  
Judy Wagner Melish '68  
Anne Kelly Merrill '02  
Marianne Fischesser Metz '75  
Lesla Walter Meyer '84  
Mary Rakel Meyer '73  
Tess Meyer '15  
Kim Kroell Meyrose '01  
Ally Michalski '11  
Laura Buchert Middendorf '76  
Mr. & Mrs. Michael Milbourn  
Angela Higgins Miller '94  
Mrs. Ann Miller  
Mrs. Libbie Miller  
Paula Miller Miller '63  
Terri McMillen Miller '81  
Christine Terzuoli Minix '05  
Jessica Mitsch '20  
Alexis Lonneman Mize '06  
Mr. & Mrs. Michael Mock  
Caryl Moenster '64  
Lauren Meirose Moore '04  
Pam Gilbert Moore '69  
Mary Jo Link Morgan '66  
Ms. Gail Motz  
Pat Riedinger Mouch '61  
Barb Beaudoin Muehlenkamp '84  
Jeanne Huster Muia '82  
Mr. & Mrs. Michael Mullins  
Amber Burley Munnerlyn '00  
Allison Murphy '11

Ariel Chachoff Murphy '10  
Ellie Murphy '21  
Sr. Mary Bridget Murphy, SNDdeN  
Mr. & Mrs. Herman Naberhaus  
Mr. & Mrs. Steve Nagel  
Sarah Nagy '19  
Leah Pelzel Nash '08  
Stephanie Asbrock Neroni '05  
Emily Neubauer '05  
Maddie Neubecker '17  
Pam Neuner '71  
Cassidy Miller Newport '11  
Amy Neumann Nicholas '05  
Ms. Kimberly Niehaus  
Ally Nimitz '15  
Mary Ann Boehl Nolte '70  
Mr. & Mrs. Russ Nucaste  
Mr. & Mrs. Gary Obert  
Megan Obert '23  
Paula Hauser O'Brien '98  
Mr. & Mrs. David O'Bryan  
Mr. & Mrs. Michael O'Connor  
Caroline O'Donnell '16  
Lynne Rhoda O'Donnell '84  
Mr. & Mrs. Tom O'Donnell  
Ava Oelrich '15  
Joanna Mills Osher '04  
Nicole Rosati Otting '04  
Julie Partin Otto '92  
Mary Jeanne Matre Overcash '66  
Murf Schulkers Painter '68  
Mary Kay Ziegler Palmer '60  
Suzanne Mink Pappas '60  
Elizabeth Bayer Paxson '14  
Ms. Betty Ann Peddicord  
Jeanne Buehler Peddicord '88  
Libby Pelzel '12  
Olivia Pennington '19  
Mary Schwartz Perkinson '05  
Alexis Perry '19  
Connie Leinberger Petitt '64  
Megan Hicks Phelan '04  
Lynne Piepmeyer '76  
Becca Pittinger '14  
Ms. Kate Plas  
Cheryl Ernst Popolin '65  
Elaine Brown Powers '67  
Jean Broermann Preston '70  
Amanda Puthoff '16  
Carolyn Smith Puthoff '83  
Katie Puthoff '05  
Katie O'Donnell Quehl '05  
Mary Ann O'Callaghan Rack '61  
Ms. Patty Ragio  
Kim Nieman Rahe '75  
Brittany Rakowitz '98  
Desi Harsch Ralston '98  
Ms. Kay Rands  
Sheri Schlotman Ratliff '84  
Mr. Ryan Sweeney & Ms. Molly Rauch  
Kimberly Recinella '10  
Dr. Jo Ann Recker '60, SNDdeN  
Jeanne Franklin Reckman '66  
Mr. & Mrs. Timothy Reed  
Nancy Harris Rees '70  
Mr. & Mrs. Clifford Reifel  
Hailey Reifel '21  
Debbie Feiertag Reilly '74  
Megan Reilly '13  
Melissa Rakel Rein '82  
Terri Tillar Reinhart '70  
Lindsay Jordan Reiser '00  
Abby Reneker '18  
Marcia Hoerst Reuscher '75



Hannah Kohne '13  
Monique Fischer Kolkmeier '78  
Mr. & Mrs. Lance Kollstedt  
Teri Neumann Korbee '68  
Ms. Jennifer Koutnik  
Mr. & Mrs. Patrick Kowalski  
Taylor Kowalski '20  
Ellie Kowitz '21  
Lynne Kraemer '88  
Amy Wietmarschen Krebs '02  
Shirley Roth Kreider '61

Carol Mintkenbaugh Lighfield '60  
Rose Ellis Lindeman '64  
Erica Linder-Callahan '05  
Pat Day Lindsey '62  
Maria Lingardo '15  
Margaret Hurlburt Lockwood '52  
Bridget Logan '19  
Debbie Vonderhaar Loucks '88  
Jenni Schumacher Love '85  
Mary Kay Merland Luchenbill '63  
Ms. Marlene Luffy

# Honor Roll of Investors

Sara Reuscher '04  
 Kathryn Reynolds '11  
 Angie Ciaramitaro Ricketts '86  
 Mary Jo Eschmeyer Rickling '63  
 Michelle Burns Ridder '02  
 Mr. & Mrs. Gary Rieder  
 Chris Bucheit Rielag '68  
 Amy Rieman '82  
 Ms. Beth Riesenberger  
 Martha Rolfes Rizzo '67  
 Jennifer Morgan Roach '98  
 Jean Schoeny Robbins '72  
 Kenny Bishop Robers '65  
 Andrea Wolf Roebker '10  
 Carol Mouch Roettele '60  
 Becky McDonald Roettgers '80  
 Lynn Koetter Rook '85  
 Anna Rosenthal '16  
 Kate Rosenthal '17  
 Anna Rosian '21  
 Mrs. Peggy Roundtree  
 Gina Siemers Rouse '97  
 Laine Rousseau '10  
 Melissa McManus Ruchel '02  
 Andrea Morrison Rueve '10  
 Monica Ruscher '08  
 Kelly Teuschl Russo '06  
 Jayni Lehrter Ryherd '07  
 Laura Sagrati '85  
 Chrissy Rutherford Salley '01  
 Julie Gruber Sanders '74  
 Darlene Meyer Santel '68  
 Shannon Towle Savage '05  
 Michelle Savoti '92  
 Mr. & Mrs. Scott Schappacher  
 Jessica Tonges Schatzman '05  
 Erin Connelly Schaub '05  
 Nicole Biersack Scheetner '85  
 Joan Kramer Schmidt '68  
 Marlene Prickel Schmidt '65  
 Anna Schnegg '18  
 Mr. & Mrs. Mike Schuckman  
 Dianne Craven Schuler '78  
 Joan TenBieg Schulte '54  
 Erin Wietmarschen Schultz '97  
 Roy Schumacher  
 Mr. & Mrs. Denis Schutte  
 Heather Schwab '21  
 Kaylene Botsford Schwab '87  
 Mr. & Mrs. Steve Schwartz  
 Emily Schwartz '21  
 Sarah Schwartz '17  
 Stephanie Smoller Schwartz '02  
 Abby Schwarz '15  
 Dr. & Mrs. Thomas Schwieterman, M.D.  
 Wendy Knapmeyer Schworer '85  
 Angela Sebald '18  
 Vicki Keehan Selm '77  
 Pat Matre Selmeier '71  
 Peggy Zinser Shafer '65  
 Meg Rauckhorst Sharp '78  
 Mrs. Elaine Shawver  
 Ginny Shawver '73  
 Jess Lehrter Shelton '04  
 Ms. Nancy Shoenberger  
 Terri Doerger Shotwell '70  
 Julie Sonnanstine Sibthorp '90  
 Barb Lockwood Siciliano '71  
 Mrs. Erika Sidler  
 Peg Siegmund '60  
 Margaret Bottenhorn Sifferlin '66  
 Riley Simmons '20  
 Zoe Sipe '14  
 Kelly Dennis Sipocz '10

**Would you  
 like to leave a  
 lasting legacy  
 at MND?**

**Find out more by  
 visiting [www.mndhs.plannedgiving.org](http://www.mndhs.plannedgiving.org)**

Sami Becker Sittner '07  
 Abby Skeens '14  
 Mary Anne Kettler Smallwood '74  
 Mr. & Mrs. Richard Smethurst  
 Abigail Smith '24  
 Donna Stites Smith '61  
 Gabrielle Smith '09  
 Mr. & Mrs. Jeff Smith  
 Julie Burns Smith '62  
 Sandra Mueller Smith '62  
 MND Faculty & Staff  
 Beth Perry Solomon '08  
 Joan Sontag '81  
 Brielle Owens Sorter '07  
 Sue Elsbrock Sowder '67  
 Mr. & Mrs. Fred Spatz  
 Mr. & Mrs. Kevin Stachowski  
 Cass Stainton '21  
 Mr. & Mrs. Jeffrey Stainton  
 Sandy Cooper Stallo '70  
 Amanda McCabe Stanton '98  
 Maggie Steele '11  
 Grace Wermes Stegeman '11  
 Natalie Steibel '18  
 Judy Connor Stephens '76  
 Carol Kamphaus Stevens '78  
 Gwen Harpring Stich '05  
 Mrs. Marion Stich  
 Becky Stiens '07  
 Lisa Metz Stiver '81  
 Lisa DiFabio Stizlein '67  
 Jo Ann Flavin Stone '81  
 Katie Storer '11  
 Jasmine Storms '12  
 Jennifer Santel Stout '99  
 Mr. & Mrs. Rodney Strayer  
 Rylee Strayer '21  
 Elena Strecker '11  
 Mr. & Mrs. Greg Strotman  
 Judy Stuerenberg '75  
 Elyse Tollefson Suddendorf '03  
 Maggie Boehm Sullivan '62  
 Maria Sunderhaus '21  
 Sarah Hoekzema Sylvester '02  
 Carol Huber Tanner '61  
 Mrs. Joyce Taphorn  
 Melissa Tate '05  
 Kelly Taylor '19  
 Mary Kay Cunningham Taylor '69  
 Lisa Soellner Tepe '82  
 Emily Wenzel Tester '09  
 Jen Eling Thamann '01  
 Laura Brown Thamann '77  
 Pam Haverland Thomas '71  
 Susan Ossim Thomas '86  
 Terri Niehaus Thumann '64  
 Mr. & Mrs. Joel Tiberghien  
 Mary Steiner Tobias '73  
 Sister Carol Tobler '67, SIW

Mary Ellen Heenan Tompkins '53  
 Becky Jasontek Tomsic '93  
 Total Quality Logistics  
 Rachel Toviniiti '06  
 Casey Towle '11  
 Barb Stiens Trapp '67  
 Brigid Donnellon Tremblay '04  
 Alice Trent '11  
 Lauren Carroll Trigo de Serrano '08  
 Michelle Browning Trovillo '92  
 Kathleen Trubee '10  
 Lauren Doughty Tubesing '05 1st Lt,  
 USAF  
 Lauren Tyus '07  
 Mr. & Mrs. Ed Ujvagi  
 Sister Frances Ellen Ulrich '56, SNDdeN  
 Jane Hammergren Urlage '71  
 Meghan Hickey Vagedes '09  
 Jenny Santel Valerius '64  
 Maria Veneziano '14  
 Karen Rosselot Verbryke '70  
 Margaret Vettel '67  
 Kate Carstens Vieth '10  
 Steven Gondol & Marisa Vilardo '96  
 Kim Vonderbrink Volpenhein '00  
 Carol Eling Vonderhaar '70  
 Jill Vonderhaar '11  
 Katherine Chapel Vonderhaar '96  
 Riley Vonderhaar '21  
 Pam Clement Voorhees '70  
 Madeline Waddell '24  
 Jackie Hagenhoff Waddle '62  
 Cara Wagner '19  
 Mr. & Mrs. Richard Wagner  
 Connie Huening Waitas '70  
 Carol Smith Walker '64  
 Mr. Christopher Walter  
 Brooke Walters '17  
 Abby Waning '20  
 Gretchen Waning '20  
 Donna Stout Wanstrath '70  
 Mrs. Jacquelyn Warner  
 Mr. & Mrs. Damian Watkins  
 Bella Watkins '24  
 Mary Ann Mailhot Watrous '71  
 Emily Webb '15  
 Kate Kreiner Weber '99  
 Dr. & Mrs. Robert Weber  
 Nancy Gosink Weisbrod '70  
 Janet Weisman '55  
 Carol Hornberger Wellinghoff '70  
 Addy Werling '20  
 Judy Byrnes Wermes '80  
 Kathie Jacquemin Wernke '72  
 Margie Huddle Wesley '94

Barbara Wesseler '65  
 Emily Wessendarp '06  
 Deacon & Mrs. Mark Westendorf  
 Liv Westendorf '21  
 Alex Wever '17  
 Mr. & Mrs. Oliver Wever  
 Maggie Wiesner '99  
 Kathie Donnelly Wietmarschen '71  
 Jill McCaffrey Wiles '82  
 Karen Klosterman Wilkes '78  
 Amy Givens Williams '77  
 Shelly Smith Williamson '05  
 Mr. David Willson  
 Mr. John Wilson  
 MacKenzie Wilson '08  
 Nancy Cripe Wing '67  
 Hayley Winslow '19  
 Sue Nordloh Winstel '55  
 Tracey Huiet Wirtz '04  
 Marie Brewer Wise '97  
 Ms. Sue Wiseman  
 Mrs. Mary Ellen Wittekind  
 Pat Woellert '73  
 Elizabeth Woeste '18  
 Sandi Packer Wolbert '66  
 Mr. & Mrs. George Wolterman  
 Debbie Vogt Woltz '68  
 Mr. & Mrs. Frank Worthoff  
 Sabine Worthoff '17  
 Claire Casey Woycke '67  
 Marilyn Brosch Woycke '62  
 Caroline Wright '99  
 Elizabeth Wright '03  
 Mr. & Mrs. Joseph Wright  
 Kari Kremp Wright '00  
 Mr. & Mrs. Joseph Wulf  
 Sally Wulf '20  
 Katie McPhillips Wurtz '06  
 Lanie Wysong '19  
 Collette Yaegel '05  
 Lori Yaegel '85  
 Susan Ackman Yarcusko '79  
 Nancy Disque Yenke '71  
 Ann Coad York '80  
 Alli Young '06  
 Debbie Stehlin Young '69  
 Emily Young '21  
 Jane Rosselot Young '67  
 Monica Bird Young '96  
 Barb Lichtenberg Youst '66  
 Kyla Zestermann '17  
 Katherine Hack Zimmermann '12  
 Annie Lipps Zoz '89  
 Jamie Spurgin Zupka '03





# Honor Roll of Investors

Claire Casey Woycke '67  
Jane Rosselot Young '67

## Class of '68 (17.83%)

Jeanette Teismann Arlinghaus '68  
Pat Merkle Artist '68  
Mary Wilz Bell '68  
Beth Schuster Brozzart '68  
Barb Hesse Coyle '68  
Mary Ann Herman Eckert '68  
Karen Kerkhoff Gromada '68  
Julie Mattei Hellebusch '68  
Anne Harsch Hinman '68  
Mary Ann Strittmatter Kenyon '68  
Teri Neumann Korbee '68  
Barb Mueller Larbes '68  
Barb Brenner Laxton '68  
Pam Harmeyer McCormack '68  
Judy Wagner Melish '68  
Murf Schulkers Painter '68  
Chris Bucheit Rielag '68  
Theresa Magro Ruebusch '68  
Darlene Meyer Santel '68  
Joan Kramer Schmidt '68  
Barb Mouch Strotzman '68  
Kathryn Wesseler '68  
Debbie Vogt Woltz '68

## Class of '69 (14.29%)

Barb Bailey '69  
Donna Corsmeier Bain '69  
Ruth Bedinghaus '69, SNDdeN  
Betsy Brothers '69  
Rose Boehm Bruns '69  
Mary Back Chaney '69  
Marlene Burckard Cook '69  
Jean Schneider Crockett '69  
Kathy Schulkers Harmeyer '69  
Rosemary Pelstring Harris '69  
Nancy Wohleber Hoye '69  
Deni Swartzbaugh Isaacson '69  
Beth Nettleton King '69  
Liz Strittmatter Large '69  
Nancy Glassmeyer Meyrose '69  
Pam Gilbert Moore '69  
Barbara Schmitz Owen '69  
Roxie Brotherton Reinert '69  
Mary Kay Cunningham Taylor '69  
Margarie Bushelman Warnecke '69  
Linda Pate Wolf '69  
Debbie Stehlin Young '69

## Class of '70 (20.67%)

Sue Allen Ackley '70  
Donna VonHolle Arnold '70  
Diane Bechtold '70  
Rosanne Mersch Brooks '70  
Patti Gray Buisson '70  
Paula Kennedy Call '70  
Kathi Klingenberg Fitzpatric '70  
Debbie Knueven Gannaway '70  
Julie Sicker Goldman '70  
Jill Jackson Jones '70  
Dianne Rittenhouse Juenger '70  
Sandy Kersey Kerns '70  
Marianne Zwick Krismer '70  
Sheila Voegele Lehrter '70  
Sarah Hamilton Leinberger '70  
Kathy McConkey '70  
Cindy Reagan Miller '70  
Linda Strite Murnane '70  
Jeri Ihlendorf Murray '70  
Mary Ann Boehl Nolte '70  
Jean Broermann Preston '70

Nancy Harris Rees '70  
Terri Tillar Reinhart '70  
Terri Doerger Shotwell '70  
Sandy Cooper Stallo '70  
Carol Borgerding Tuthill '70  
Karen Rosselot Verbryke '70  
Sandy Villari '70  
Carol Eling Vonderhaar '70  
Pam Clement Voorhees '70  
Connie Huening Waitas '70  
Donna Stout Wanstrath '70  
Nancy Gosink Weisbrod '70  
Carol Hornberger Wellinghoff '70  
Kathy Ries Wissel '70  
Mary Lynn Woebkenberg '70  
Debbie Rieder Yee '70

## Class of '71 (18.13%)

Ann Becker '71  
Ruth Baillargeon Beiting '71  
Denny DuPriest Brune '71  
Phyllis Sherrer Butterworth '71  
Pat Brotherton Campion '71  
Linda Cornell '71  
Eileen Thomas Creeden '71  
Patty Miller Dean '71  
Anne Ernst '71  
Linda Heile Fye '71  
Mary Bashe Govan '71  
Linda Muennich Homan '71  
Patrice Woll Jones '71  
Pat Blocker Kremers '71  
Mary Kay Goldschmidt Kristofferson '71  
Vada Patterson Love '71  
Sunny Warther Martin '71  
Pam Neuner '71  
Shirley Schwieter Plahovinsak '71  
Cathy Bushelman Roelker '71  
Connie Samuelson '71  
Cheryl Bellman Schrage '71  
Pat Matre Selmeier '71  
Barb Lockwood Siciliano '71  
Cheri Cunningham Stacey '71  
Connie Judd Taylor '71  
Pam Haverland Thomas '71  
Jane Hammergren Urlage '71  
Mary Ann Mailhot Watrous '71  
Kathie Donnelly Wietmarschen '71  
Nancy Disque Yenke '71  
Dorothy Benken Zahner '71  
Cheryl Frey Zaidan '71

## Class of '72 (12.18%)

Geri Cook Alder '72  
Bev Reder Brownfield '72  
Sue Grau Dempsey '72  
Mary Jane Klingenberg Ebert '72  
Sue Lohmueller Howard '72  
Cecilia Boehm Krusling '72  
Pat Volle Lane '72  
Diane Riesenberg Mack '72  
Kris Carey Meade '72  
Barbara Pflanz '72  
Jean Schoeny Robbins '72  
Karen Arlinghaus Rummel '72  
Cherie Guilfoyle Shannon '72  
Joan Amorini Sheehan '72  
Pam Broerman Shelton '72  
Barb Kathman Strauss '72  
Donna Mustard Walsh '72  
Kathie Jacquemin Werneke '72  
Barb Zwick Wolf '72

## Class of '73 (10.14%)

Vicki Meno Ficke '73  
Bonnie Gronefeld Geiger '73  
Patty Rolver Haumesser '73  
Cindy Judd '73  
Sue Strittmatter Kelly '73  
Cindy Nieman Kemper '73  
Mary Rakel Meyer '73  
Ginny Shawver '73  
Terri Montag Smith '73  
Mary Steiner Tobias '73  
Donna Foltzer Traut '73  
Julie Matre Weaver '73  
Kathy Hughes Wilking '73  
Pat Woellert '73

## Class of '74 (11.67%)

Terry Brotherton '74  
Vicki Mastruserio Eckstein '74  
Mary Effler '74  
Molly McQuaide Gusweiler '74  
Debbie Roma Haines '74  
Maureen Sweeney Kerkhoff '74  
Linda Theis Kibblewhite '74  
Michele Kroth Naish '74  
Diana Weinheimer Oberschmidt '74  
Debbie Feiertag Reilly '74  
Marianne Schwertman Rohlf's '74  
Julie Gruber Sanders '74  
Mary Anne Kettler Smallwood '74  
Joy Wilson Thaler '74

## Class of '75 (10.42%)

Eileen Sauer Breyley '75  
Ann Becksmith Donahue '75  
Mary McGing Duckworth '75  
Karen Haines Durchholz '75  
Anne Scollard Fredrickson '75  
Becky Byrnes Gumbleton '75  
Teresa Harmon Leugers '75  
Marianne Fischesser Metz '75  
Mary Frank Minnis '75  
Mary Potticary Obert '75  
Kim Nieman Rahe '75  
Marcia Hoerst Reuscher '75  
Debby Steckler Routt '75  
Diane Buer Ryder '75  
Judy Stuerenberg '75

## Class of '76 (14.78%)

Karen Schwartz Aielli '76  
Valerie Woll Badinghaus '76  
Dusty Veid Bechtel '76, DVM  
Nancy Bushelman Berling '76  
Pamela Porta Ewton '76  
Concetta Overberg Geraci '76  
Kathy Gibbons '76  
Diana VonDenBenken Grinkemeyer '76  
Jan Wernery McNeil '76  
Laura Buchert Middendorf '76  
Maryann Nardini '76  
Lynne Piepmeyer '76  
Teri Perin Rohan '76  
Judy Connor Stephens '76  
Mary Ashbrock Vonderbrink '76  
Jackie Donnellon Welling '76  
Julie Holthaus Woodward '76

## Class of '77 (14.29%)

Mary Beth Donahue Armstrong '77  
Faye Clements '77  
Mary McQuaide Connors '77  
Sue Mahsling Erdman '77  
Dottie Harmon Eveleigh '77

Barbara Gibbons Greiwe '77  
Jayne Fehring Grimm '77  
Nancy Pierce Hollmann '77  
Debbie Medosch Kirkpatrick '77  
Julie Donnellon Lovell '77  
Leslie Meyer New '77  
Vicki Keehan Selm '77  
Pam Kroeger Staun '77  
Laura Brown Thomann '77  
Marianne Roth Tisch '77  
Kathy Morgan Vonderhaar '77  
Lynn Ostholthoff Welty '77  
Amy Givens Williams '77

## Class of '78 (11.11%)

Linda Harmon Burgdorf '78  
Chris Barnhorn Carozzoni '78  
Joan Beeber Doyle '78  
Mary Ann Twidale Flynn '78  
Michelle Richter Ganim '78  
Judy Balch Gerwe '78  
Ava Puthoff Herbig '78  
Monique Fischer Kalkmeyer '78  
Ellen Edelmann Marks '78  
Julie Balbach Peters '78  
Mary Sedmak Ruscher '78  
Dianne Craven Schuler '78  
Meg Rauckhorst Sharp '78  
Carol Kamphaus Stevens '78  
Karen Klosterman Wilkes '78  
Anne Vonderbrink Wilkinson '78

## Class of '79 (13.56%)

Terry McQuaide Barbara '79  
Beth Amorini Brinkman Dugan '79  
Vicki Harmeyer Burris '79  
Kathy Marous Contadino '79  
Lisa Ulmer Dierkers '79  
Lisa Schoettker Fagin '79  
Cindy Turney Feltman '79  
Barbara Bockhorst Gerbus '79  
Peg Auciello Halpin '79  
Paula George Hutchison '79  
Debi Soellner Inman '79  
Cindy Heckel Johnson '79  
Kim Keels '79  
Tina Woll Klonne '79  
Louise Doherty Martin '79  
Mary Steckler Moore '79  
Marianne Schurig Nishimori '79  
Anne Schramm Purdue '79  
Mary Carole Storer Schneider '79  
Catherine Schulte '79  
Jackie Schwarber '79  
Ellen Mettey Spaeth '79  
Holly Janson Tanner '79  
Susan Ackman Yarcusko '79

## Class of '80 (13.61%)

Mary Ellen Stecz Adams '80  
Julie Naberhaus Bergman '80  
Sue Reilly Buescher '80  
Amy Sutliff Curtis '80  
Kathy Ryan Czerwonka '80  
Amy Durchholz Farr '80  
Cathy Hill Glassmeyer '80  
Lisa Thomas Hartung '80  
Debbie Fritz Hayes '80  
Debbie Bosse Hufft '80  
Laura Griga Julian '80  
Mary Fago Justice '80  
Chris Kelly Kelsey '80  
Maureen Marous Mears '80  
Carol Williams Roberts '80

## ANNUAL FUND

# Honor Roll of Investors

Becky McDonald Roettgers '80  
Andrea Cinquina Rosenthal '80  
Lisa Harmon Rousseau '80  
Judy Byrnes Wermes '80  
Ann Coad York '80

### Class of '81 (12.21%)

Jeanne Emerson Allen '81  
Joan Young Arnold '81  
Sharon Siefert Bukaty '81  
Cynthia Gray '81  
Jane Bruns Haslem '81  
Vicky Eiser Heile '81  
Lori Burkhardt Jackson '81  
Teri Cassidy Lacey '81  
Ann Lehrter Madsen '81  
Kathy Kissel McQueen '81  
Terri McMillen Miller '81  
Gail Glassmeyer Pryse '81  
Joan Sontag '81  
Lisa Metz Stiver '81  
Jo Ann Flavin Stone '81  
Annette Hilvert Sussli '81

### Class of '82 (10.71%)

Beth Antenucci '82  
Mary Kohne Brownfield '82  
Michelle Grammel Buehler '82  
Kate Wright Chisholm '82  
Liz Costello Cutter '82  
Cheryl Angst Duncan '82  
Lynne Bath Harris '82  
Ruby Steele Herbst '82  
Terri Butz Kerley '82  
Jeanne Huster Muia '82  
Theresa Kuntz Niehaus '82  
Melissa Rakel Rein '82  
Amy Rieman '82  
Lisa Soellner Tepe '82  
Pam Thiemann '82  
Jill McCaffrey Wiles '82

### Class of '83 (7.38%)

Chris Lynd Deters '83  
Margo Hungler Ehemann '83  
Sharon Woeste Garry '83  
Connie Gerdes '83  
Jill Horner Greene '83  
Amy Knapmeyer Hilberg '83  
Juanita Kindel '83  
Karen Logan '83  
Carolyn Smith Puthoff '83  
Mary Beth Voshefski Timmel '83  
Janet Welling '83

### Class of '84 (12.5%)

Karen Back Bankemper '84  
Jill Devine '84  
Mary Jo Noschang Hertlein '84  
Nancy Kettler Hopkins '84  
Terri Gertz Kelsey '84  
Karen Albert McNally '84  
Lesla Walter Meyer '84  
Barb Beaudoin Muehlenkamp '84  
Lynne Rhoda O'Donnell '84  
Sheri Schlotman Ratliff '84  
Sherry Mack Roebel '84  
Peggy Schmitz Schmidt '84

### Class of '85 (17.95%)

Mary Agricola '85  
Tina Linesch Black '85  
Amy McGrath Bruno '85  
Liz Keane Coughlin '85

Beth Bause Finn '85  
Jacki Fischer '85  
Judy Poppe Fulcher '85  
Krista Gadzala '85  
Jennifer Jung Gallo '85  
Judy Donnellon Hall '85  
Julie Reynolds Hicks '85  
Lori Sauer Konkoly '85  
Julie Ebbeler Leonard '85  
Jenni Schumacher Love '85  
Tami Hoekzema Peters '85  
Lynn Koetter Rook '85  
Laura Sagrati '85  
Nicole Biersack Scheetner '85  
Wendy Knapmeyer Schworer '85  
Dawn Stiens '85, DVM  
Lori Yaegel '85

### Class of '86 (6.2%)

Laura Ostholthoff Estes '86  
Denise Baum Goldschmidt '86  
Emily Luken '86  
Angie Ciaramitaro Ricketts '86  
Debbie Hennel Rouse '86  
Rose Ross South '86  
Susan Ossim Thomas '86  
Michele Feliberty Trivedi '86

### Class of '87 (5.96%)

Christy Hoekzema Banke '87  
Nancy Knapmeyer Bowles '87  
Gina Wernke Brownstead '87  
Pam Albert Corbin '87  
Gail Rath Dorsey '87  
Ann Blomer Everly '87  
Kaylene Botsford Schwab '87  
Kristin Wiwi Spatz '87  
Pam Schneider Steinmetz '87

### Class of '88 (8.77%)

Rebecca Clubb Bidinger '88  
Missie Mitsch Conner '88  
Tricia Reed Humphreys '88  
Julie Jasontek '88  
Pam Gerstemeier Kalb '88  
Julie Hammer Knight '88  
Lynne Kraemer '88  
Chris Walker Lederle '88  
Debbie Vonderhaar Loucks '88  
Jeanne Buehler Peddicord '88

### Class of '89 (6.3%)

Lisa Scheuerle Alexander '89  
Christine Glatt Bode '89  
Kelli Brown '89  
Chris Kolkmeier Ernst '89  
Wendy Durham Gottenbusch '89  
Amy Heenan Gruppo '89  
Tammy Weber-Ridener '89  
Annie Lipps Zoz '89

### Class of '90 (6.19%)

Betsy Hoekzema Bobst '90  
Lisa Ostholthoff Griffin '90  
Tara Huwel Kennedy '90  
Krista Paas Nicholas '90  
Julie Sonnanstine Sibthorp '90  
Margo Wiltshire '90  
Julie Hagedorn Zude '90, M.D.

### Class of '91 (10.81%)

Stephanie Lichtenberg Brausch '91  
Julie Lichtenberg Bronner '91

Ann Eling Falci '91  
Yvonne Molina France '91  
Tracy Ulland Goldie '91  
Libby Carroll Groskopf '91  
Erin Devine Hofmann '91  
Tricia Huston Kilgore '91  
Kelly Stark Lang '91  
Ellen Eberenz Long '91  
Cathy Bressert Magold '91  
Kathy Beimesche Sheldon '91  
Angie Stallo-Kramer '91

### Class of '92 (10.38%)

Cindy Wagner Bricking '92  
Angela Ernst Frith '92  
Kim Kappler Hewitt '92  
Lisa Ille Klein '92  
Julie Partin Otto '92  
Mallika Pereira '92  
Michelle Savoti '92  
Cristina Seda-Hoelle '92  
Michelle Browning Trovillo '92  
Julie Wade Walulik '92  
Angie Creeden Wilking '92

### Class of '93 (5.56%)

Molly Knapmeyer Ganz '93  
Bob & Lisa Wagner Jennings '93  
Cherie Weber Keller '93  
Heather Doten Sauer '93  
Shannon Storm Sieg '93  
Becky Jasontek Tomic '93  
Tricia Mullen Wolfer '93

"I received a beautiful note from the young lady who will be the recipient of our scholarship donation. Believe me, I give it with joy!"

Gabrielle Rosselot  
Strand '55

### Class of '94 (12.4%)

Angie George Arengo '94  
Kim Back '94  
Karen Obert Bayliff '94  
Lori Jung Bean '94  
Julie Eling Bower '94  
Stacy Gigliotti Broenner '94  
Teri Ulland Bucheit '94  
Nicole Gertz Burke '94  
Katie Heenan '94  
Sarah Thamann Irey '94  
Michelle Williams Metzler '94  
Angela Higgins Miller '94  
Jennifer Strasser Smith '94  
Lynn Schatzman Welch '94  
Margie Huddle Wesley '94

### Class of '95 (7.38%)

Amanda Cook Brueggemeier '95  
Charissa Diekmeyer '95  
Sarah Dodds Doecker '95  
Megan Gerwel Forbis '95  
Meridith Murphy Grasso '95

Bridget Hoerst Hoffman '95  
Emily Gruber Hurley '95  
Allison Jostworth Moser '95  
Andrea Ventura Smedley '95

### Class of '96 (7.75%)

Allison Kreiner Albertz '96  
Jennifer Jacob Blomer '96  
Karen Scherl Klaus '96  
Tina Houston Leder '96  
Jaime Kneer McDermott '96  
Jana Roszkowski '96  
Karen Bubak Udom '96  
Steven Gondol & Marisa Vilardo '96  
Katherine Chapel Vonderhaar '96  
Monica Bird Young '96

### Class of '97 (9.43%)

Annie Carl '97  
Anissa George Cundall '97  
Jocelyn Gregory '97  
Kate Harrow '97  
Amy Lang Hessell '97  
Katie Hoekzema '97  
Jennifer Hoffman Lukes '97  
Angela Nardini Markle '97  
Tara Nahrup Morris '97  
Jane Karlak Robbins '97  
Gina Siemers Rouse '97  
Erin Wietmarschen Schultz '97  
Jillian Valerius Shute '97  
Martha Flynn Trydahl '97  
Amy Gardner Tyler '97  
Marie Brewer Wise '97

### Class of '98 (10.13%)

Emily Camp Bonar '98  
Mary Pierce Brenner '98  
Lori Shelley Daniels '98  
Meghan Ionna Donovan '98  
Marie Hahn '98  
Lisa Koebbe Jamison '98  
Jennifer Lynch Koerner '98  
Paula Hauser O'Brien '98  
Brittany Rakowitz '98  
Desi Harsch Ralston '98  
Jennifer Morgan Roach '98  
Kristin Heskamp Seiler '98  
Amanda McCabe Stanton '98  
Kelly Tholke Sullivan '98  
Katie Rahe Warnecke '98  
Katie Margolies Wietmarschen '98

### Class of '99 (6.33%)

Kelly Heenan Bergmann '99  
Jamie Boeckman '99  
Erin Day '99  
Kelly Kirby Ehrnschwender '99  
Janelle Koop Keller '99  
Emily Geier Maupin '99  
Jennifer Santel Stout '99  
Kate Kreiner Weber '99  
Maggie Wiesner '99  
Caroline Wright '99

### Class of '00 (6.12%)

Stacy Boeckman '00  
Nikki Robinson Bunch '00  
Caley Burke '00  
Kelley Gilreath '00  
Sarah Arlinghaus Gulley '00  
Becky Hoerst '00  
Tori Shawver Marshall '00  
Amber Burley Munnerlyn '00

# Honor Roll of Investors

Lindsay Jordan Reisert '00  
Stephanie Seibert Smith '00  
Kim Vonderbrink Volpenhein '00  
Kari Kremp Wright '00

## Class of '01 (4.49%)

Katie Hostiuck Branson '01  
Taylor Mitchell Giltner '01  
Kristen Robinson Hoskinson '01  
Teresa Lukey Long '01  
Kim Kroell Meyrose '01  
Chrissy Rutherford Salley '01  
Jen Eling Thamann '01

## Class of '02 (7.02%)

Amy Goddard Celis '02  
Emily McCabe Feldman '02  
Alexis Cox Fulton '02  
Danielle Schuckman Geiman '02  
Kelly Kaiser '02  
Amy Wietmarschen Krebs '02



Anne Kelly Merrill '02  
Maria Merritt Morris '02  
Michelle Burns Ridder '02  
Melissa McManus Ruchel '02  
Stephanie Smoller Schwartz '02  
Sarah Hoekzema Sylvester '02

## Class of '03 (6.79%)

Kim Hardesty Baker '03  
Angela Santel Copsey '03  
Maureen de St. Aubin Corgiat '03  
Danielle Wampler Culbertson '03  
Tara Collett Hogel '03  
Holly Jones '03  
Kate Hoyt Kamel '03  
Amy Cornwell Mangano '03  
Elyse Tollefson Suddendorf '03  
Elizabeth Wright '03  
Jamie Spurgin Zupka '03

## Class of '04 (10.11%)

Helene Backscheider Adkins '04  
Megan Witte Black '04  
Erin Satzger Clemons '04  
Lindsey Romes Compton '04  
Katie Kubale Epling '04  
Andrea Knollman Gier '04  
Danielle Meyer Greaves '04  
Jenna Vanden Eynden Heck '04  
Michelle Lacey '04  
Anita Lukey '04  
Lauren Meirose Moore '04  
Joanna Mills Osher '04

Nicole Rosati Otting '04  
Megan Hicks Phelan '04  
Sara Reuscher '04  
Emily Ryan '04  
Jess Lehrter Shelton '04  
Brigid Donnellon Tremblay '04  
Tracey Huiet Wirtz '04

## Class of '05 (19.79%)

Jennifer Babak '05  
Kim Wagner Barrett '05  
Kelly Friedmann Brady '05  
Beth Vonderbrink Brandner '05  
Stacey Buescher '05  
Jennifer Rohan Christensen '05  
Melissa Bobinski Garris '05  
Katie Walker Hefner '05  
Bryn Henry Hoctor '05  
Megan Florea Holcomb '05  
Claire Miller Jordan '05  
Lea Lingardo Kemme '05

Angela Keppler Keryeski '05  
Eileen Legaspi-Wilson '05  
Erica Linder-Callahan '05  
Kelley Holliday Maddux '05  
Becca Volk Mandru '05  
Maggie Folzenlogen Martino '05  
Mary McClellan '05  
Jennifer McPeters '05  
Lindsay Melia '05  
Christine Terzuoli Minix '05  
Stephanie Asbrock Neroni '05  
Emily Neubauer '05  
Amy Neumann Nicholas '05  
Mary Schwartz Perkinson '05  
Katie Puthoff '05  
Katie O'Donnell Quehl '05  
Shannon Towle Savage '05  
Jessica Tonges Schatzman '05  
Erin Connelly Schaub '05  
Gwen Harpring Stich '05  
Christina Vangeloff Tarnowski '05  
Melissa Tate '05  
Lauren Doughty Tubesing '05 1st Lt,  
USAF  
Shelly Smith Williamson '05  
Collette Yaegel '05

## Class of '06 (12.15%)

Samantha LaBarbera Arrowood '06  
Kaitlin Corbett Bowlin '06  
Allison Muennich Bredestege '06  
Kimberly Capehart '06  
Amie Adkins Cook '06

Emily MacLeod Edwards '06  
Katie Weisbrod Freson '06  
Britta Halpin Golueke '06  
Beth Gregory '06  
Kate Anderson Grimm '06  
Molly Roettgers Ihlendorf '06  
Julie Dean McMahon '06  
Alexis Lonneman Mize '06  
Lauren Costello Neises '06  
Andrea Backscheider Neuwirth '06  
Lindsay Owens '06  
Kelly Pontius '06  
Beth Teuschl Russo '06  
Rachel Tovinitii '06  
Emily Wessendarp '06  
Katie McPhillips Wurtz '06  
Alli Young '06

## Class of '07 (5.68%)

Julianne Smith Bell '07  
Kristine Wersel Coe '07  
Katie Poulin Knight '07  
Natalie Starvaggi Lang '07  
Erin Mackey '07  
Jayni Lehrter Ryherd '07  
Sami Becker Sittner '07  
Brielle Owens Sorter '07  
Becky Stiens '07  
Lauren Tyus '07

## Class of '08 (12.5%)

Maggie Altimier '08  
Megan Condit Balbach '08  
Jennifer Biele '08  
Caitlin Blaut Comer '08  
Rachel Creevy D'Errico '08  
Hanna Eckhoff-Kremer '08  
Laura Elliott '08  
Lauren Anderson Gesenhues '08  
Skylar Halpin '08  
Devin Hayes '08  
Bridget Grau Hoskins '08  
Rachel Klosterman Joebgen '08  
Elizabeth Haverkos Liederbach '08  
Jill Stephens Majo '08  
Natalie Hansman McDonald '08  
Leah Pelzel Nash '08  
Emily Rotella '08  
Liane Rousseau '08  
Monica Ruscher '08  
Alexa Weston Shanahan '08  
Beth Perry Solomon '08  
Sharon Strizak '08  
Lauren Carroll Trigo de Serrano '08  
MacKenzie Wilson '08

## Class of '09 (6.33%)

Kara Friedmann Bell '09  
Kara Kindel Canfield '09  
Kimberly Cutter '09  
Laura Dittrich '09  
Annie Wessendarp Ester '09  
Audrey Eggenberger McCray '09  
Gabrielle Smith '09  
Emily Wenzel Tester '09  
Caitlin Kloppenburg Timmons '09  
Meghan Hickey Vagedes '09

## Class of '10 (10.7%)

Carly Mears Beck '10  
Ellen Crema '10  
Madeline Duckworth '10  
Ashley Towle Dutton '10  
Megan Heidel '10

Molly Heister '10  
Carolyn Eggenberger Jansen '10  
Alli Kelsey '10  
Sara Kuhlman '10  
Molly Mullinger '10  
Ariel Chachoff Murphy '10  
Kimberly Recinella '10  
Sarah Bohlen Reigle '10  
Andrea Wolf Roebker '10  
Laine Rousseau '10  
Andrea Morrisson Ruede '10  
Kelly Dennis Sipocz '10  
Kathleen Trubee '10  
Kate Carstens Vieth '10  
Katie Markgraf Wright '10

## Class of '11 (18.33%)

Maria Gallagher Arnold '11  
Lydia Backscheider '11  
Rachel Frank Bluhm '11  
Chloe Meyer Braun '11  
Holly Laub Brown '11  
Colleen Butler '11  
Sarah Kohl Chasteen '11  
Rianne Harrison Cohen '11  
Candace Crowley '11  
Lauren DiNardo '11  
Amy McMahan Elam '11  
Elizabeth Deutsch Fuhler '11  
Beth Warning Haubner '11  
Molly Hildebrandt '11  
Abbey Hopkins '11  
Rachel DeLord Irwin '11  
Lauren Lacey '11  
Emma Stiver Lesko '11  
Jennifer Marks '11  
Ally Michalski '11  
Allison Murphy '11  
Cassidy Miller Newport '11  
Mindy Reed-Morrice '11  
Kathryn Reynolds '11  
Maggie Steele '11  
Grace Wermes Stegeman '11  
Katie Storer '11  
Elena Strecker '11  
Casey Towle '11  
Alice Trent '11  
Jen Vonderbrink '11  
Jill Vonderhaar '11

## Class of '12 (7.98%)

Kelly Cutter Burger '12  
Allison Carr '12  
Rachael DiLeonardo '12  
Kelly Gurren '12  
Kathryn Hook '12  
Robyn Kerley '12  
Annemarie Koch '12  
Krista Kuhlman '12  
Maria Mattei '12  
Libby Pelzel '12  
Caitlin Shipp '12  
Jasmine Storms '12  
Katherine Hack Zimmermann '12

## Class of '13 (6.86%)

Katie Bohlen '13  
Callie Buck '13  
Lindsay Cronin '13  
Courtney Fasola '13  
MacKenzie Gerdes '13  
Kelsey Green '13  
Elizabeth Guye '13  
Maddie Haubner '13

## ANNUAL FUND

# Honor Roll of Investors

Hannah Kohne '13  
Rose Lavelle '13  
Julianne Marks '13  
Megan Reilly '13

### Class of '14 (12.41%)

Rachel Bronner '14  
Catherine Buck '14  
Kayla Cagle '14  
Leah Callahan '14  
Caitie Connell '14  
Amy Dean '14  
Sarah Drumm '14  
Kristi Duncan '14  
MacKenzie Feathers '14  
Emma Garry '14  
Megan Goslee '14  
Kendall McKee '14  
Elizabeth Bayer Paxson '14  
Becca Pittinger '14  
Zoe Sipe '14  
Abby Skeens '14  
Maria Veneziano '14

### Class of '15 (8.99%)

Jessica Burris '15  
Caroline Cusick '15  
Kelsey Day '15  
Samantha DeVore '15  
Kacy Eckley '15  
Caroline Gallo '15  
Caroline Middendorf Kinsella '15  
Maddie Lees '15  
Maria Lingardo '15  
Tess Meyer '15  
Ally Nimitz '15  
Ava Oelrich '15  
Abby Schwarz '15  
Jessica Towle '15  
Emily Webb '15

### Class of '16 (5.82%)

Maria Bonino '16  
Lydia Brinkmann '16  
Emily Buck '16  
Elena Colby '16  
Skylar Drefcinski '16  
Katie Fasola '16  
Laney Gallagher '16  
Jessie Gries '16  
Caroline O'Donnell '16  
Amanda Puthoff '16  
Anna Rosenthal '16

### Class of '17 (10.74%)

Molly Bonino '17  
Dorie Coggin '17  
Caroline DeGroff '17  
Erin Flanagan '17  
Brooke Frazier '17  
Morgan Hoffman '17  
Carmen Kerley '17  
Sydney Leshnak '17  
Maddie Neubecker '17  
Kate Rosenthal '17  
Sarah Schwartz '17  
Brooke Walters '17  
Alex Wever '17  
Sabine Worthoff '17  
Kyla Zestermann '17

### Class of '18 (13.75%)

Erin Cagle '18  
Payton Drefcinski '18

Jenna Ehrler '18  
Bridget Felczan '18  
Lilly Fisher '18  
Veronica France '18  
Mary Angela Guye '18  
Bri Heverin '18  
Katie Hindersman '18  
Sydney Jefferson '18  
Caroline Leonard '18  
Jourdhel Mabunay '18  
Anna Mattei '18  
Abby Renneker '18  
Anna Schnegg '18  
Angela Sebald '18  
Natalie Steibel '18  
Elizabeth Woeste '18

### Class of '19 (12.35%)

Julia Barnes '19  
Lindsey Benhase '19  
Amanda Clark '19  
Rachel Creeden '19  
Caroline Gott '19  
Leah Gutzwiller '19  
Julia Hoefling '19  
Devon Hoffman '19  
Amy Horton '19  
Sarah Horton '19  
Bridget Logan '19  
Sarah Nagy '19  
Olivia Pennington '19  
Alexis Perry '19  
Kelly Taylor '19  
Cara Wagner '19  
Hayley Winslow '19  
Lanie Wysong '19

### Class of '20 (12.99%)

Leah Black '20  
Grace Brecht '20  
Margaret Ehlen '20  
Julia Feldmann '20  
Caroline France '20  
Isabella Geraci '20  
Caroline Graue '20  
Zoey Harig '20  
Sarah Heard '20  
Jules Jefferson '20  
Taylor Kowalski '20  
Randi Mailhot '20  
Jessica Mitsch '20  
Mackenzie Mulcare '20  
Riley Simmons '20  
Abby Waning '20  
Gretchen Waning '20  
Addy Werling '20  
Ellie Wolterman '20  
Sally Wulf '20

### 2020 2021 Now & Forever Campaign

Mr. & Mrs. Michael Allaire  
Mr. & Mrs. Peter Anderson  
Anonymous  
Mary Beth Donahue Armstrong '77  
Pat Merkle Artist '68  
Mr. & Mrs. Jim Baldock  
Battelle  
Julie Jacobs Beckham '82  
Mrs. Caitlin Bennett  
Julie Naberhaus Bergmann '80  
Mr. & Mrs. Kevin Blum  
Mr. & Mrs. Rick Bohne  
Ms. Amy Bonino

Mr. & Mrs. Robert Borgerding  
Jo Ann Schneider Brems '51  
Mrs. Jeannine Brinkmann  
Mr. & Mrs. James Brinks  
Ms. Lynne Brophy  
Carol Bross-McMahon '82  
Mr. & Mrs. Gerald Budde  
Sue Reilly Buescher '80  
Bushelman Supply Company  
Mr. & Mrs. Dennis Caruso  
Mr. Kenneth Chatlos  
Faye Clements '77  
Mr. & Mrs. Matthew Coffey  
Mr. & Mrs. James Connell II  
Frances Gessing Costello '45  
Kim & Jim Creeden  
Liz Costello Cutter '82  
Donna Shively D'Aquila '77  
Mr. & Mrs. David Dawson  
Mr. & Mrs. Jerry Day  
Mr & Mrs Jim & Karen Day  
Mr. & Mrs. James DeJoy  
Cookie Zurenko Devine '61  
Mr. & Mrs. Gregg DeVita  
Mr. & Mrs. Dan Diegmüller  
Joan Beeber Doyle '78  
Mr. & Mrs. Craig Drefcinski  
Mr. & Mrs. Ron Drumm  
Bill & Rose Eckhoff  
Mrs. Winnie Eckhoff  
Anne Ernst '71  
Evers Welding Co., Inc.  
Ann Eling Falci '91  
Mr. & Mrs. Andrew Falk  
Mr. & Mrs. Bob Fasola  
Ms. Jeanne Fisher  
Mr. & Mrs. Randy Flannery  
Mr. & Dr. Michael Fox  
Yvonne Molina France '91  
Mr. & Mrs. Rick Friedmann  
Angela Ernst Frith '92  
Sharon Woeste Garry '83  
Mr. & Mrs. Tom Geier  
General Electric Matching Gifts  
Foundation  
John & Marie Carnevale George '74  
Concetta Overberg Geraci '76  
Judy Back Gerwe '78  
Mr. & Mrs. David Gillman  
Mr. & Mrs. Mark Godbey  
Mr. Jerome Goddard  
Mr. David Haire  
Peg Auciello Halpin '79  
Mr. & Mrs. Bob Harper  
Mr. & Mrs. Kevin Harris  
Mr. & Mrs. Glenn Hartman  
Patricia Buening Hartman '61  
Lisa Thomas Hartung '80  
Diana Condeni Haskell '67  
Mr. & Mrs. Bob Hauser  
Mr. & Mrs. Kevin Havens  
Mr. & Mrs. Tom Haverkos  
Debbie Fritz Hayes '80  
Mr. & Mrs. Doug Healy  
Mary Rohlf Heilers '94  
Mr. & Mrs. Dave Heilmann  
Stephen & Julie Mattei Hellebusch '68  
Karen Kemper Henson '65  
Mr. & Mrs. Mark Holly  
Mr. & Mrs. Vince Hopkins  
Hormel Foods  
Mr. Ben Hunt & Mrs. Reen Hunt  
IBM Matching Grants Program  
Mr. & Mrs. Brian James

Lisa Wagner Jennings '93  
Johnson & Johnson  
Mr. & Mrs. Rick Jones  
Mr. & Mrs. Tom Joseph  
Laura Griga Julian '80  
Pam Gerstemeier Kalb '88  
Terri Butz Kerley '82  
Tricia Huston Kilgore '91  
Beth Nettleton King '69  
Monica Martin Koch '74  
Marianne Zwick Krismer '70  
Mr. & Mrs. Bill Kuhlman, Jr.  
Dr. Joyce Kupfer-Mulderig & Dr. James Mulderig  
Fallon Lane '00  
Dr. & Mrs. Alan Laub  
Mr. & Mrs. Michael Laufersweiler  
Mr. Robert Leshnak & Ms. Nancy Nix  
Margaret Hurlburt Lockwood '52  
Mr. & Mrs. John Maier  
Mr. & Mrs. Ralph Maresco  
Mr. & Mrs. Tim Marklay  
Mr. & Mrs. Joseph Marksteiner  
Mr. & Mrs. David Mattei  
MJ Mattei '71  
Lillian Leahy McCabe '66  
Jenny Jacobs McConnell '87  
Mr. & Mrs. Ryan McKenna  
Kathy Kissel McQueen '81  
Mr. & Mrs. Dave Meyer  
Mr. & Mrs. Dan Nagy  
Mr. & Mrs. Bob Niehaus  
Gretchen Osner '61  
Kathy Fredricks Oswald '65  
Annelise Page '12  
Mr. & Mrs. Hal Pisciotta, Jr.  
Becca Pittinger '14  
Mr. & Mrs. John Planes  
Mr. & Mrs. Michael Quinn  
Joann Obermeyer Rauh '48  
Mr. & Mrs. Tony Reed  
Sarah Richter '20  
RJ Beischel Building Co  
Mr. Frank Robinson & Dr. Vicka Bell-Robinson  
Mr. & Mrs. Mike Robinson  
Dr. & Mrs. Jerome Rotella  
Cassie Rowland '03  
Karen Arlinghaus Rummel '72  
Mr. Tom Salerno  
Melissa Eckes Sanders '09  
Darlene Meyer Santel '68  
Mr. & Mrs. Gerry Schatzman  
Mr. & Mrs. Bill Schlater  
Catherine Schulte '79  
Mr. & Mrs. Steve Schwartz  
Cristina Seda-Hoelle '92  
Sisters of Notre Dame de Namur  
Sandra Mueller Smith '62  
Marcia Kollman Spraul '66  
Cheri Cunningham Stacey '71  
Mr. & Mrs. Kevin Stachowski  
Dr. & Mrs. Tim Steffen  
Mrs. Marion Stich  
Cindy Rieselmann Stiens '74  
Ms. Carol Stillman  
Sr. Rita M. Sturwold, SNDdeN  
Takeda Pharmaceuticals  
Michelle Ernst Theis '87  
Pam Thiemann '82  
Mrs. Carol Thomas  
Mr. & Mrs. Kenneth Thomas  
Sheila Gillespie Thompson '66  
Ted & Peggy O'Donnell Torbeck '74



# Honor Roll of Investors

Donna Foltzer Traut '73  
Michele Feliberty Trivedi '86  
Katie Houser Trupiano '06  
Mr. & Mrs. Duy Vu  
Dr. & Mrs. Ken Wagner  
Mrs. Ginny Wagner  
Mr. Steven Walsh  
Margie Bushelman Warnecke '69  
Lynn Ostholthoff Welty '77  
Emily Wessendarp '06  
Emily Fedders Wilford '95  
Mr. & Mrs. Steve Wolf  
Collette Yaegel '05  
Alli Young '06  
Mr. & Mrs. Michael Young  
Mr. & Mrs. Michael Zierolf

## NAMED SCHOLARSHIP INVESTORS

### Abigail & Gretchen Waning '20 Twins Endowed Scholarship

Mr. David Haire

### Adele Salerno Memorial Endowed Scholarship

Beth Antenucci '82  
Terry Brotherton '74  
Nancy Weisgerber DeVore '75  
Amy Bissmeyer Galarowicz '84  
Bonnie Gronefeld Geiger '73  
Mr. and Mrs. Doug Hallett  
Shelly Haskamp Helscher '72  
Catherine Honkomp Hirsch '90  
Betsy Hencheck Hoppe '83  
Pam Gerstemeier Kalb '88  
Mr. Tom Salerno

### Amy Jacobs Reynolds '88 Memorial Endowed Scholarship

Anonymus  
Mr. & Mrs. James Beeber  
Marge Horn Butz '60  
Ms. Barb Cassidy  
Mr. and Mrs. Michael Coffey  
Mr. & Mrs. Paul Collett  
Mr. & Mrs. Bryan Crane  
Cookie Zurenko Devine '61  
Mr. & Mrs. Gary Drake  
Mr. & Mrs. John Estell  
Dr. & Mrs. Mark Goddard  
Mr. & Mrs. Tom Grau  
Mr. & Mrs. Kevin Harris  
Kathy Wiesner Hasley '69  
Mr. & Mrs. Chris Horn  
Mr. & Mrs. Norm Horn  
Ms. Mary Horner  
Mrs. Pat Ihldorf  
Mrs. Jane Jacobs  
Pam Gerstemeier Kalb '88  
Mr. & Mrs. Michael Kopen  
Libby Lamping Langefeld '63  
Mr. Richard Lawrence  
Mr. & Mrs. Bob Luck  
Fran Buddelmeier Matz '63  
Mr. & Mrs. Michael McKeown  
Mr. and Mrs. Daniel Molina  
Ms. Stephanie Agruso Neffle  
Mr. & Mrs. Christopher Papa  
Mr. & Mrs. Gary Paul  
Mr. & Mrs. Steven Richter  
Ms. Linda Smith

Mr. & Mrs. Jerry Spradlin  
Mr. & Mrs. Virgil Stewart  
Ms. Megan Thomas  
Ms. Patricia Thomas  
Lori Woycke Webb '88  
Mr. and Mrs. Fritz White  
Diane Sicker Zaferes '73  
Mr. & Mrs. Larry Zix

### Bob & Linda Fasola Family Endowed Scholarship

Mr. & Mrs. Bob Fasola

### Bob Leshnak, Sr. Memorial Endowed Scholarship

Mrs. Lorraine Leshnak  
Mr. Robert Leshnak and Ms. Nancy Nix  
Sydney Leshnak '17

### Bucheit Family Endowed Scholarship - Cece '64 and Chris '68

Cece Bucheit Donovan '64  
Chris Mersch Mallette '68  
Chris Bucheit Rielag '68

### Budde Family Endowed Scholarship

Mr. and Mrs. Gerald Budde

### Centennial Class of 1960 Academic Promise Endowed Scholarship

Dr. & Mrs. Marc Alexander  
Gerry Johnson Bauman '60  
Judy Rolf Bayer '60  
Sue Buerger Bonnette '60  
Jeni Woebkenberg Burke '95  
Marge Horn Butz '60  
Mary Beth Kreidler Conover '60  
Mrs. Carol Drees  
Sharon Woebkenberg Faust '65  
Kristy Woebkenberg Georgiton '97  
Connie Klopmeier Gerwe '60  
Ms. Georgia Glunt  
Carol Voegele Greenwood '60  
Marge Knuveen '60  
Jennifer Lynch Koerner '98  
Ms. Margaret Kreuzer  
Ms. Kathleen Lamping-Arar  
Carol Mintkenbaugh Lighfield '60  
Kathy McConkey '70  
Kathy Greiwe McKinney '60  
JoAnn Vicar Mueller '61  
Dr. Jo Ann Recker '60, SNDdeN  
Carol Mouch Roettele '60  
Mary Fahrendorf Schmidt '62  
Mary Lynn Woebkenberg '70

### Classes of 1961 and 1962 Catholic Education Endowed Scholarship

Eileen Gruener Flege '61  
Joanne Pfister Fuchs '62  
Marilyn Heichelbech Gruber '61  
Julie Baron Hughes '62  
Mary Ann O'Callaghan Rack '61  
Jackie Hagenhoff Waddle '62  
Marilyn Brosch Woycke '62

### Coach Grayson and Sarah FitzHugh Endowed Scholarship

Mr. & Mrs. Grayson FitzHugh  
Gabrielle Smith '09

### Crable Family Endowed Scholarship

Cindy Turney Feltman '79  
Leslie Meyer New '77

### Cristina Seda-Hoelle '92 Family STEM

Endowed Scholarship  
Cristina Seda-Hoelle '92

### Dean Family Endowed Scholarship

Mr. & Mrs. Jim Dean  
Julie Dean McMahon '06

### Eileen O'Donnell Lipps '65 Memorial Endowed Scholarship

Anonymus  
Miss Denise Austing  
Miss Tara Bain  
Mr. & Mrs. George Beimesche  
Mrs. Diane Blazer  
Mr. & Mrs. Dan Bohlen  
Eileen Clark Breeze '91  
Mrs. Christy Brown  
Mr. and Mrs. Stephen Burger  
Chris Jones Carlisle '89  
Julie Clark Carper '89  
Ms. Patricia Cianciolo  
Mr. & Mrs. Tom Conroy  
Chelsi Creech '10  
Ms. Mary Crowley  
Mr. & Mrs. Jim & Karen Day  
Mr. and Mrs. Paul Dehner  
Mr. & Mrs. Ryan Detmer

## Join MND's Heritage Society!

[www.mndhs.  
plannedgiving.org](http://www.mndhs.plannedgiving.org)

Mr. & Mrs. Dan Diegmuller  
Cece Bucheit Donovan '64  
Kara Driscoll '11  
Mrs. Cynthia A. Eckerle Bertke  
Bill & Rose Eckhoff  
MJ Eling '66  
Terri Hayes Engel '65  
Susan Schmidt Fischesser '65  
Dr. & Mrs. Matt Fletcher, PhD  
Mr. & Mrs. Todd Forman  
Mr. and Mrs. William Frank  
Mr. & Mrs. Timothy Franz  
Katie Weisbrod Freson '06  
Jennifer Jung Gallo '85  
Ms. Deanne Gardonio  
Mr. & Mrs. Tom Geier  
Marie Carnevale George '74  
Lisa Ostholthoff Griffin '90  
Mr. & Mrs. Jim Groene  
Betsy Grout '15  
Mr. and Mrs. Doug Hallett  
Peg Auciello Halpin '79  
Mr. & Mrs. Andrew Hauser

Ms. Linda Heidi  
Mary Rohlf's Heilers '94  
Kim Kappler Hewitt '92  
Catherine Honkomp Hirsch '90  
Katie Hoekzema '97  
Mr. & Mrs. Dave Holthaus  
Mr. Joe Holtman  
Betsy Hencheck Hoppe '83  
Kristen Robinson Hoskinson '01  
Mr. & Mrs. Nick Hosmer  
Ms. Lisa Houser  
Mr. Ben Hunt and Mrs. Reen Hunt  
Mr. & Mrs. Michael Jasonetek  
Pam Gerstemeier Kalb '88  
Dottie Knapp Kampman '63  
Terri Butz Kerley '82  
Mrs. Esther Kidder-Steman  
Linda Ferkenhoff Knapmeyer '61  
Dottie Schmidt Kron '66  
Ron & Cheri Lehrter  
Mary Kay Doerger Levesay '65  
Mr. and Mrs. Thomas Lipps  
Mr. & Mrs. John Maier  
Tori Shawver Marshall '00  
Jeri Maschinot '65  
Dawn Lally McMillen '96  
Maureen Schmitz Mechley '89  
Mrs. Ann Miller  
Betsy Rieman Murray '82  
Jill O'Bryan '14  
Mr. & Mrs. Dennis O'Donnell  
Gretchen Osner '61  
Kathy Fredricks Oswald '65  
Mr. & Mrs. Joseph Posge  
Mr. & Mrs. Jake Pucci  
Amy Rieman '82  
Mrs. Jeanne Rieskamp  
Pat O'Donnell Rinschler '66  
LouAnn Beresford Robb '65  
Mr. & Mrs. Mike Robinson  
Mr. & Mrs. David Rudy  
Ms. Rita Rusche  
Mr. & Mrs. Gerry Schatzman  
Mr. & Mrs. Mark Schenkel  
Mr. and Mrs. David Schildknecht  
Mr. & Mrs. Bill Schlater  
Peg O'Donnell Schmidt '66  
Lisa Baker Schoenberger '84  
Mr. & Mrs. Steve Schwartz  
Kathy Beimesche Sheldon '91  
MND Social Committee  
Mrs. Krista Sonka  
Tricia Barnes Speicher '83  
Cheri Cunningham Stacey '71  
Mr. & Mrs. Dave Stutzer  
Grace Wermes Stegeman '11  
Katelyn Sussli '12  
Mr. & Mrs. Rick Tanner  
Jen Eling Thamann '01  
Nancy Lutz VonBenken '65  
Mr. and Mrs. Thomas Wagner  
Donna Giehl Wallman '65  
Mr. & Mrs. Ray Wiemarschen  
Mr. & Mrs. Joe Wilmers  
Pam Wagner Wilson '65

### Elaine Basham '81 Memorial Endowed Scholarship

Jeanne Emerson Allen '81  
Dianne Glorius Boland '62  
Michelle Grammel Buehler '82  
Lori Blaut Fehr '81  
Marty Schulkers Santos '81

## ANNUAL FUND

# Honor Roll of Investors

### **Ernst Family Endowed Scholarship**

Anne Ernst '71  
Angela Ernst Frith '92  
Mr. & Mrs. Vince Hopkins  
Michelle Ernst Theis '87

### **Halpin Family Endowed Scholarship - Peg '79, Britta '06, Skylar '08 & Delaney '11**

Vicki Harmeyer Burris '79  
Peg Auciello Halpin '79

### **Ivy Walsh '18 Endowed Scholarship**

Vanguard Charitable  
Mr. Steven Walsh

### **Janet M. & Donald L. Traut Memorial Endowed Scholarship**

Mr. & Mrs. Donald Traut  
Donna Foltzer Traut '73

### **Jeanne Mueller Rekers '44 Memorial Endowed Scholarship**

Phyllis Wilson Aileen-Donohew '66  
Connie King Baker '67  
Bank of America Charitable Gift Fund  
Terry Brotherton '74  
Caren Bizzarri Daily '67  
Cece Bucheit Donovan '64  
Pam Gerstemeier Kalb '88  
Carol Weartz Lord '64  
Mueller Family Foundation  
Sandra Mueller Smith '62

### **Jennifer Martin '89 Memorial Scholarship**

Mr. David Axt and Ms. Susan Wilkinson  
Ms. Patricia Baas  
Mr. & Mrs. William Bascom  
Mrs. Kate Bruns  
Mr. Richard Curry  
Carrie Geers Deffinger '89  
Mrs. Janice Habel  
Ms. Sandra Hawley  
Ms. Nancy Jones  
Pam Gerstemeier Kalb '88  
Mr. & Mrs. John Kissel  
Mr. & Mrs. Paul Lambert  
Peggy Parchman Lohr '82  
Mr. Nick Longo  
Mrs. Katie Maurer  
Nicole Renner McCullough '03  
Mr. & Mrs. George Miller  
Julie Lemmel Miller '89  
Ms. Elaine Nolte  
Mr. David Puckett  
Mrs. Lynne Renner  
Mr. & Mrs. Thomas Scherl  
Ms. Kristen Wessinger

### **John and Kim How Family Endowed Scholarship**

Mr. & Mrs. John How

### **Jovan Zachary '00 Memorial Endowed Scholarship**

Dr. Laura Acsadi  
Mr. & Mrs. Ed Adlard  
Anonymous  
Kim Hardesty Baker '03  
Jenny Bauer '03  
Ms. Tameka Beard  
Alana Menefield Calhoun '02  
Gia Calhoun '02  
Ms. Tracee Carmichael  
Martina Riep Ciers '02  
Christie Mock Davis '03  
Beth Deger Dektas '00  
Mr. Ray Eckes  
Ms. Tracy Edwards  
Jenny Valerius Farfing '02  
Dr. Lauren Ford  
Sarah Arlinghaus Gulley '00  
Mrs. LaTonia Hanley  
Mr. Ben Hunt and Mrs. Reen Hunt  
Holly Jackson '03  
Mr. & Mrs. Eric Jones  
Michelle Lacey '04  
Ms. Amy Land  
Jessica Lee '06  
Danielle LoVaglio-Caccavale '00  
Miss Star Makonnen  
Tori Shawver Marshall '00  
Mrs. Theresa Maxwell  
Ms. Jill McBride  
Mrs. Kasie McCurdy  
Mr. & Mrs. Dennis Meador  
Beth Crable Means '03  
Mrs. Allison Mowrey  
Mrs. Quinn Myers  
Mrs. Khady NDiaye  
Amy Neumann Nicholas '05  
Ms. Danette Palmore  
Mrs. Trena Perrine  
Courtney Heitkemper Powell '03  
Ms. Venita Robinson  
Cassie Rowland '03  
Erin McCall Rudolph '01  
Joan Freeman Ryan '00  
Elyse Tollefson Suddendorf '03  
Mr. Donald Vonhagel  
Mrs. Deidra Walker  
Emily Holthaus Wey '03  
Katie Kaiser Whitson '00  
Ms. Natasha Wilcox  
Stephanie Woebkenberg '98  
Kari Kremp Wright '00  
Collette Yaegel '05  
Mr. & Mrs. Kerry Yorn  
Mrs. Shannon Yung  
Jonelle Zachary '03  
Ms. Julie Ziegenhorn

### **Julie Bien Niehoff '62 Memorial Endowed Scholarship**

Barb Horn Grande '62

### **Julie Costello '97 Memorial Endowed Scholarship**

Beth Feichtner Baxter '97  
Michele Tuchfarber Carp '97  
Cindy Turney Feltman '79  
Michele Kroth Naish '74  
Dr. & Mrs. Jerry Palermo  
Mr. & Mrs. Thomas Scherl

### **Karen Meno '65 Memorial Endowed Scholarship**

Nancy Lutz VonBenken '65

### **Kathleen Kelley '91 Memorial Endowed Scholarship**

Linda Cornell '71  
Bonnie Gronefeld Geiger '73

### **Kathleen Schnelle Hipskind Maier Community Service Scholarship**

Taylor Mitchell Giltner '01  
Betsy Hencheck Hoppe '83  
Mr. & Mrs. Dennis Jones  
Pam Gerstemeier Kalb '88  
Mrs. Ann Miller  
Mr. & Mrs. David Otten  
Debbie Feiertag Reilly '74  
MND Social Committee

### **Kevin and Ruthann Fox Carr '82 Family STEM Endowed Fund**

Ruthann Fox Carr '82, DVM

### **Knapmeyer & Hilberg Family Endowed Scholarship**

Amy Knapmeyer Hilberg '83  
Linda Ferkenhoff Knapmeyer '61

### **Kupfer-Mulderig Family Endowed Scholarship**

Dr. Joyce Kupfer-Mulderig and Dr. James Mulderig

### **Leahy Family Memorial Endowed Scholarship**

Linda Morgan Rubens '66

### **Liz Marksteiner '04 Memorial Endowed Scholarship**

Helene Backscheider Adkins '04  
Sarah Deutsch Beasley '07  
Jennifer Bernier '04  
Mr. & Mrs. Carl Deutsch, Jr.  
Andrea Knollman Gier '04  
Mr. & Mrs. Tom Lukey  
Mr. & Mrs. Joseph Marksteiner  
Shannon Quinn '04  
Chrissy Rutherford Salley '01

### **Maralyn Rohe Memorial Endowed Scholarship**

Mr. & Mrs. Rick Friedmann

### **Marcia Petronio '68 Memorial Endowed Scholarship**

Mr. and Mrs. Terrence Adkins  
Pat Merkle Artist '68  
Ruth Back '68  
Joyce Samad Chiles '68  
Caren Bizzarri Daily '67  
Patty Miller Dean '71  
Jane Petronio Gorton '73  
Karen Kerkhoff Gromada '68

Julie Mattei Hellebusch '68  
Anne Harsch Hinman '68  
Beth Nettleton King '69  
Chris Mersch Mallette '68  
Dr. & Mrs. Michael Mattei  
Blythe Nettleton Pietila '69  
Chris Bucheit Rielag '68  
Joan Kramer Schmidt '68  
Phyllis Petronio Shireman '65  
Smucker's  
Nancy Lutz VonBenken '65

### **Margaret Glorius '33 Memorial Endowed Scholarship**

Lynn Ostholthoff Welty '77

### **Marianne Hoobler Staubach '60 Endowed Scholarship**

Paula Miller Miller '63  
Marianne Hoobler Staubach '60

### **Marti Handorf Jung '62 Memorial Endowed Scholarship**

Lori Jung Bean '94  
Dianne Glorius Boland '62  
Michelle Hoelscher Frey '84  
Jennifer Jung Gallo '85  
Mr. & Mrs. Bob Herman  
Mrs. Gwendolyn Klemmer  
Pat Day Lindsey '62  
Joyce Miller Mason '63  
Elizabeth Bayer Paxson '14  
Lois Albrinck Wiehe Martin '64  
Dr. & Mrs. Bob Wolterman

### **Mary Hanrahan Brogan '72 Memorial Scholarship**

Patty Miller Dean '71  
Shelly Haskamp Helscher '72

### **Mary Mehmert Memorial Endowed Scholarship**

Anonymous  
Connie King Baker '67  
Carol Bross-McMahon '82  
Terry Brotherton '74  
Paula Kennedy Call '70  
Caren Bizzarri Daily '67  
Mrs. Cynthia A. Eckerle Bertke  
Catherine Honkomp Hirsch '90  
Pam Gerstemeier Kalb '88  
Ms. Jennifer Koutnik  
Stephanie Mack Loucka '93  
MJ Mattei '71  
Linda Strite Murnane '70  
Mr. and Mrs. David Schildknecht

### **Meyer Family Endowed Scholarship**

Mr. & Mrs. Dave Meyer

### **Michael & Kathy Kissel McQueen '81 Family Endowed Scholarship**

Mary Lou Leugers Kissel '59  
Judy Brigger Kuethe '60  
Kathy Kissel McQueen '81

### **Michelle L. Hodge Memorial Endowed Scholarship**

Terry Brotherton '74  
Mr. & Mrs. Jim Clark  
Mr. & Mrs. Brian DeGroff  
Sarah Dodds Doepker '95

*Great care has been taken in the preparation of these lists. We sincerely apologize for any errors and ask that they be called to our attention.*

*Thank you.*

# Honor Roll of Investors

Bill & Rose Eckhoff  
Ms. Kristi Jo Jedlicki  
Mr. & Mrs. Gerry Kauffmann  
Ms. Bev Ryan Miller  
Mr. Gerald Miller  
Mr. & Mrs. Michael Qualters  
Mr. & Mrs. Don Seadler  
Mr. & Mrs. Dave Statzer  
Mr. and Mrs. Robert Toomb  
Dr. & Mrs. Bob Wolterman

## Nancy Matre Horn '78 Memorial Endowed Scholarship

Dianne Craven Schuler '78  
Kathy Morgan Vonderhaar '77  
Julie Matre Weaver '73  
Anne Vonderbrink Wilkinson '78

## Patty Zinser Collins '63 Memorial Endowed Scholarship

Mary Palopoli Albright '63  
Mr. James Collins  
Amy Shafer Crissman '93  
Mrs. Joanne Estenfelder Nesmith  
Carol Moeggenberg Faulhaber '63  
Mary Anne Blocker Frey '63  
Mary Kay Merland Luchenbill '63  
Joyce Miller Mason '63  
Paula Miller Miller '63  
Joanne Tomasella Plocica '61  
Peggy Zinser Shafer '65  
Vicky Piepmeier Ulland '68  
Nancy Lutz VonBenken '65  
Pam Wagner Wilson '65  
Mrs. Betty Zinser

## Peter W. Bushelman Memorial Endowed Scholarship

Barbara Pflanz '72

## Rick & Tara Jones Family Endowed Scholarship

Mr. & Mrs. Rick Jones

## Roger Grein Youth Philanthropy Endowed Scholarship

Lori Sauer Konkoly '85

## Rotella Family Endowed Scholarship

Dr. and Mrs. Jerome Rotella

## Ruth Feldhaus Lehrter '46 Memorial Endowed Scholarship

Beth Antenucci '82  
Fay Elfers Fischesser '49  
Ms. Jean Hartman  
Mrs. Margaret Lang  
Ron & Cheri Lehrter  
Sheila Voegelers Lehrter '70  
Marty Schulkers Santos '81  
Judy Tensing '65  
Ann Doyle Wurzelbacher '46

## Sabrina Wolf '16 Endowed Scholarship

Mr. & Mrs. Steve Wolf

## Shayna Wolf '23 Endowed Scholarship

Mr. & Mrs. Steve Wolf

## Sister Julie Jarvis Memorial Endowed Scholarship

Jennifer Rohan Christensen '05  
Sandy Rekers Egli '65  
Catherine Honkomp Hirsch '90  
Betsy Hencheck Hoppe '83  
Pam Gerstemeier Kalb '88  
Audrey Sieber Koch '53  
Carol Weartz Lord '64  
Merrill Lynch Bank of America  
Paula Miller Miller '63  
Ms. Sheila Rice  
Judy Henderson Wakim '56

## Sisters of Notre Dame de Namur Endowed Scholarship

Ann Weiler Beck '83  
Sisters of Notre Dame de Namur

## St. Therese de Lisieux Memorial Endowed Scholarship

Kathy Ryan Czerwonka '80

## Stevie Wolf '20 Endowed Scholarship

Mr. & Mrs. Stevie Wolf

## Susan Geyman Cortesi '62 Endowed Scholarship

Sue Geyman Cortesi '62

## Thomas & Celeste Haverkos Endowed Scholarship

Mr. & Mrs. Tom Haverkos

## Thomas Geier Literary Arts Endowed Scholarship

Anonymous  
Ms. Ann Arbogast  
Laney Bender-Slack '86  
Mrs. Beth A. Brown  
Bushelman Supply Company  
Kimberly Capehart '06  
Amy Bissmeyer Galarowicz '84  
Mr. & Mrs. Tom Geier  
Shelly Haskamp Helsing '72  
Julia Hider '10  
Catherine Honkomp Hirsch '90  
Betsy Hencheck Hoppe '83  
Becky Strand Johnson '84  
Pam Gerstemeier Kalb '88  
Mary Kay Goldschmidt  
Kristofferson '71  
Emily Geier Maupin '99  
Annelise Page '12  
Mr. & Mrs. Howard Kradjel  
Mr. & Mrs. Den Sies  
Grace Wermes Stegeman '11  
Casey Towle '11  
Margie Bushelman Warnecke '69  
Raegan Willertz '13

## Tim & Debi Marklay Family Endowed Scholarship

Mr. and Mrs. Tim Marklay

## Heritage Society

Anonymous  
Mr. & Mrs. Tom Cassady  
Mr. James Collins  
Mr. Drew Derrick  
Joan Koettters Gould '57  
Kate Kreimer '62  
Ron & Cheri Lehrter  
Mary Kay Doerger Levesay '65  
Mr. & Mrs. John Maier  
Kathy Kissel McQueen '81  
Mary Jo Link Morgan '66  
Judy Gilligan Oswald '63  
Marianne and Roger Staubach  
Jo Ann Flavin Stone '81  
Barb Mouch Strotzman '68  
Pat TenBiege '47

## Financial Aid Endowment

Linda Theis Kibblewhite '74  
Mary Jo Link Morgan '66

## General Endowment

Anonymous  
Mr. and Mrs. Kevin Blum  
Frances Gessing Costello '45  
Mr. & Mrs. Bill Schlater

## Gifts in Kind

KDM P.O.P. Solutions Group  
Peerless Printing Company  
The Cincinnati Reds

## Athletic Sponsorship

Beacon Orthopaedics & Sports  
Medicine  
Macy's, Inc. Matching Gifts  
Mr. & Mrs. Kip Sharp

## Basketball Program

Mr. & Mrs. Terrell Boyd

## Community Service

Mr. & Mrs. Truitt Graue

## Graces & Blessings Cross Ministry

Mr. & Mrs. George Donovan  
Kathy McConkey '70  
Patty Canning Moores '82  
Mr. & Mrs. James Southward

## Theatre Fund

Mrs. Carolyn Dierkers

## Trophy Case

Quality Sports Apparel

*Save these Dates!*

**WINE, WOMEN & SHOPPING**  
(Formerly Fashion Show)  
October 7, 2021

**BLUE DEBUT**  
(New Event!)  
February 26, 2022

**THE GALA**  
March 5, 2022

**MOUNT  
NOTRE DAME**



711 E Columbia Avenue  
Cincinnati, OH 45215

Non-Profit  
U.S. Postage Paid  
Cincinnati, Ohio  
Permit No. 9192

